



# WORLD-CLASS ELECTRICAL CONDUIT FITTINGS AND ACCESSORIES

- Cable Supports
- EMT Fittings
- Rigid/IMC Fittings
- Hazardous Location Fittings
- Liquidtight Fittings
- Cable Connectors

- Strain Relief Cord Grips
- PVC Fittings
- Weatherproof Products
- Service Entrance
- Installation Supports
- Grounding

[WWW.PECO-ELECTRIC.COM](http://WWW.PECO-ELECTRIC.COM)




Since 1935, PECO has been an American, family-owned business, and a reliable, trusted, and “no nonsense” source of world-class electrical conduit fittings and accessories for thousands of electricians, contractors, and distributors across the United States and Canada.

Dear Valued Customer,

At Producto Electric Corporation (PECO), we have always strived to have long-term relationships with our customers, sales representatives and suppliers. Our new catalog embodies this approach by incorporating industry feedback based on the needs of our customers and targeting methodologies to overcome the global supply chain challenges to be the premier provider within the fittings industry.

Since 1935, PECO has been a name synonymous with the electrical conduit fittings and accessories business. Now, we have our 3<sup>rd</sup> and 4<sup>th</sup> generations of our family running the business and investing in our growth and revival as we approach our 90<sup>th</sup> year of continuous operations. We pride ourselves in being a US-based, family-owned and operated business.

We are rounding out our products lines and expanding our partnerships with sales representatives and distributors who share in our philosophy of being smaller and more agile in the face of corporate consolidations and acquisitions. Our goals are to remain dedicated to continuous improvement in our NY-based manufacturing processes, customer service, and support to our valued sales representatives, who are also the lifeblood of PECO.

We look forward to the coming years as we grow together in the United States, North America, and other strategic locations around the world. We thank you for your loyalty and partnership, and we will continue to invest in our collective success. 

Sincerely,



Scott Aronson  
President

Please visit us on our website and follow us on LinkedIn.  
Be a partner in our future success.



[www.peco-electric.com](http://www.peco-electric.com)



[/company/producto-electric](https://www.linkedin.com/company/producto-electric)



# CONTENTS

About PECO



Terms & Conditions



Cable Support Profile



Hazardous Locations Profile



## PRODUCT CATEGORIES

Cable Supports



PVC Fittings



EMT Fittings



Weatherproof Products



Rigid/IMC Fittings



Service Entrance



Hazardous Locations Fittings



Installation Supports



Liquidtight Fittings



Grounding



Cable Connectors



Miscellaneous



Strain Relief Cord Grips



Index



**NEED HELP?** CONTACT OUR FRIENDLY CUSTOMER SERVICE  
845-359-4900 • [CUSTOMERSERVICE@PECO-ELECTRIC.COM](mailto:CUSTOMERSERVICE@PECO-ELECTRIC.COM)

# ABOUT PECO

Founded in 1935, PECO is headquartered in Orangeburg, New York, just 20 miles north of New York City. We make Hazardous Location products for other large manufacturers in the industry—and are one of only two Underwriter Laboratory-listed manufacturers of Cable Support Bodies and Wedges.



PECO provides an extensive line of premium-quality electrical construction products to service commercial, industrial, and residential electrical distributors. Our tier-one support is coordinated across a strong nationwide network of sales representatives and distribution partners to satisfy all of our customers' purchasing requirements.

PECO's national distribution network is anchored from our New York location with current stocking warehouses strategically located throughout the continental United States and in Puerto Rico, which supports our Caribbean business.

**OUTSTANDING  
QUALITY**

**EXCEPTIONAL  
CUSTOMER SERVICE**

**EXTENSIVE INVENTORY  
+ FAST TURNAROUND**

## **An American Icon for Generations of Distributors + Contractors**

Throughout our history, PECO has thrived by continuously translating American ingenuity, working-class grit, and entrepreneurial agility into innovation, quality, and service. Even as our nation and industry has adapted to challenges—from wars, industrial expansions and economic booms to globalization and technological advances, PECO has been counted on to remain at the very heart of the electrical and construction industries.

## **An Intense Focus on our Mission**

Throughout these eras, PECO has stayed focused on its mission: serving as a partner to representatives, distributors, and contractors who continue to reward us for new product ideas and designs that made their job easier, their projects more efficient and their time on task shorter and trouble-free.

## **Freedom Tower and WTC Plaza**

We are proud to have our UL-listed Cable Support Bodies and Wedges in the new Freedom Tower and other WTC Plaza buildings. We were able to support our nation at a critical time by providing these components on an exceptionally accelerated turnaround basis.





# TERMS & CONDITIONS

**1. ORDER ACCEPTANCE:** Purchaser agrees that all Purchase Orders and final contracts between the purchaser and PECO are subject to the terms and conditions indicated in this catalog. Any order containing different or additional terms to those set forth herein shall be deemed material alterations and are subject to specific approval by PECO.

**2. MINIMUM ORDER:** A minimum charge of \$200.00 will be made for each invoice. Orders for less than \$200.00 can be processed for a \$25.00 small order handling fee.

**3. CASH DISCOUNT:** Upon approved credit, the following terms will apply; 2% Cash Discount, 10th prox., net 30 days. To earn this discount, invoices dated 1st through 25th inclusive are payable on the 10th of the following month. Invoices dated 26th through 31st inclusive are considered for cash discount purposes only as being dated the first day of the following month and are payable as such. Invoices bear the date the order was shipped. Cash discount does not apply to transportation, special packaging, or other special preparation or handling charges.

**4. FREIGHT:** Full freight is allowed of \$1200.00 for shipments made to locations East of the Mississippi and \$1,500.00 for shipments made to locations West of the Mississippi. Orders that do not meet the above requirements will be shipped prepaid, and charges to be added to invoices. Special routing requests such as air freight or other special handling will be shipped freight collect, except direct to job sites which will be shipped prepaid and charged.

**5. CLAIMS:** All PECO shipments are made F.O.B. shipping location. Title to the goods and risk of loss passes to the Purchaser on delivery to the Common Carrier at the shipping point. Any claim for loss or damage in transit should be filed by the Purchaser with the Common Carrier involved. PECO will not be responsible for any losses after having received "in good order" receipts from the transportation company. Claims for shortages must be reported in writing to PECO in Orangeburg, N.Y. within 30 days after receipt of shipment. Claims not reported within this time period will not be allowed.

**6. RETURN GOODS POLICY:** PECO will accept items of its manufacture for return and material credit subject to the following conditions:

Prior formal approval with an RGA Number must be secured from the Home Office in Orangeburg. This request may be initiated by the local PECO sales representative and must contain the following information: dates, catalog number, quantities, invoice and order numbers and the reason for the return request.

- All material to be returned must be currently cataloged items, in resalable condition, in full carton quantities. No broken cartons will be accepted.
- Credit will be allowed only on quantities actually received by PECO and subject to PECO inspection.
- A minimum restocking charge of 25% will be applied to all returned materials.
- Material purchased more than 12 months-prior to the return request are not returnable.
- Return shipments must be prepaid to the warehouse designated.
- Credit will be issued in the form of material credit only. Cash refunds will not be made.

**7. LIMITED WARRANTY:** PECO fittings, if properly used, are guaranteed against mechanical, electrical and physical defects for a period of one year from the date of shipment from our factory. No other express warranties or guarantees are intended or implied and are expressly disclaimed. Our obligation under this guarantee shall be limited to furnishing new fittings in exchange for fittings inspected by us and found to be defective and any other direct or consequential costs are expressly excluded.

**8. PRICES:** Subject to change without notice and are those in effect at the time of shipment. Any written quotations for specific quantities will be protected for 30 days unless otherwise noted in the original quote.

**9. TAXES:** PECO reserves the right to add to the sales price any tax imposed by law on the sale of our products.

**10. SPECIAL ORDERS:** Orders for special items not listed in our catalog which includes items modified per customer specification or unusual quantities of a standard catalog item produced especially for an order are accepted only on a non-cancelable, nonreturnable basis.

## 11. GENERAL NOTES:

- Producto Electric Corporation's fittings meet the requirements of Federal specifications:
  - W-F-408C Fittings for cable, power, electrical and conduit, metal flexible.
  - W-F-408D Fittings for conduit, metal, rigid (thick wall & thin wall EMT) type.
- Underwriters Laboratories listings will be supplied upon request.
- Products are manufactured per NEMA FB-1 to be utilized according to the National Electric Code.
- NAED/DC1 No. 78-5244.
- Product weights shown our catalog are approximate and are meant for shipping information only.



## HIGHEST QUALITY CABLE SUPPORTS

The level of construction in the U.S. continues to escalate at a rapid pace. In many cities, the only option is to build up!

**Producto Electric Corp (PECO)** features a fittings line led by our cable supports for vertical raceways and risers for high-rise buildings, making us well positioned to support the construction industry.



*Proudly used in construction of the Freedom Tower at One World Trade Center*

PECO has a complete UL-listed assembly for Cable Supports (Bodies & Wedges) and is one of only two manufacturers in the U.S. to meet the requirements of the NFPA 70® National Electric Code. Other manufacturers, along with their distributors, only have UL-listed bodies which presents risk and exposure to the contractors for a non-compliant installation.

“PECO has been a true partner. They have a quick turnaround for getting us the Cable Support bodies and wedges and have a quality product. It is nice to know that we can not only speak to a live person on the phone but that the product is also configured and fabricated right here in New York.”

~NYC Distributor



## THE PECO ADVANTAGE

We complete all wire configurations & customizations in our New York manufacturing location.

Our production team's special skill set can turn around high-quality products more rapidly than our only industry competitor.


SPECS ON BACK





# HAZARDOUS LOCATION FITTINGS – FLEXIBLE COUPLINGS (FCs)

The PECO Flexible Couplings (FCs) are made right here in the US and cut/configured at our factory in Orangeburg, NY. They are all made from bronze braided tubing, have an arc resistant liner and come with two female threaded-end fittings and two male nipples.

The FCs are  listed for sizes ½" to 2" and lengths up to 36" for each size (equal to ECGJH). Custom lengths are available, yet third party certifications are not available for lengths >36".

## APPLICATIONS

Explosion Proof and Dust Ignition Proof FCs are designed for use in areas where machine vibration or movement is a problem. They can also be used in place of rigid conduit in difficult bend situations. They are corrosion resistant and watertight.

## USES

- Chemical Plants
- Food and Beverage Plants
- Energy and Power Utilities Facilities
- Oil, Gas, Petroleum Refineries
- Pulp and Paper Facilities
- Wastewater Plants



## DID YOU KNOW?

Materials used for the FCs were also used in the US space program. Tried, tested and proven!

PECO's FCs are regarded as among the highest quality in the industry. Under agreement, we make them for two of the leading manufacturers in the electrical industry.

See our Hazardous Location Section of this catalog or visit [www.PECO-electric.com](http://www.PECO-electric.com) for more hazardous location products.



# CABLE SUPPORTS

CABLE SUPPORT  
WEDGES

CABLE SUPPORT  
BODIES

CABLE SUPPORT  
RETROFIT BODIES



CS150-B

# HIGHEST QUALITY CABLE SUPPORTS

## FEATURES

- Supports cables in vertical raceways or risers per the NFPA 70® National Electric Code
- Meets UL-listing requirements for both body & wedge assembly in High Rise Buildings (> than 75ft in height)
- Custom-cut insulating wedges for your specific application (customized at PECO's U.S. factory)
- Designed for indoor use with non-armored electrical cable at voltages up to and including 600V – for vertical conduit raceways and risers
- Required whenever the vertical rise of conductors in a raceway exceeds the values listed on back (Support Requirements for Conductors)

## APPLICATIONS

- For use with non-armored electrical cables in vertical conduit raceways and risers



### CABLE SUPPORT WEDGES

Wood with Black Lacquer Finish

Cat. No.	Trade Size	Std. Pkg.	St. Weight	Large End Dia	Height
Cut for between 1 and 3 Conductors					
CS-150PT1	1-1/2"	1	0.1	1.75	1.75
CS-200PT1	2"	1	0.3	2.13	2.13
CS-250PT1	2-1/2"	1	0.4	2.83	2.38
CS-300PT1	3"	1	0.4	3.13	2.75
CS-350PT1	3-1/2"	1	0.6	3.63	3.13
CS-400PT1	4"	1	0.7	3.88	3.38
Cut for between 4 and 6 Conductors					
CS-150PT2	1-1/2"	1	0.1	1.75	1.75
CS-200PT2	2"	1	0.3	2.13	2.13
CS-250PT2	2-1/2"	1	0.4	2.83	2.38
CS-300PT2	3"	1	0.4	3.13	2.75
CS-350PT2	3-1/2"	1	0.6	3.63	3.13
CS-400PT2	4"	1	0.7	3.88	3.38

### Support Requirements for Conductors

AWG or Circular-Mill Size of Wire	Support of Conductors in Vertical Raceways	Aluminum or Copper-Clad Aluminum	Copper
1 AWG through 1/0 AWG	Not greater than	200 feet	100 feet
2/0 AWG through 4/0 AWG	Not greater than	180 feet	80 feet
Over 4/0 AWG through 350 kcmil	Not greater than	135 feet	60 feet
Over 350 kcmil through 500 kcmil	Not greater than	120 feet	50 feet
Over 500 kcmil through 750 kcmil	Not greater than	95 feet	40 feet
Over 750 kcmil	Not greater than	85 feet	35 feet

N.E.C. Table 300-19 (a). Spacing for Conductors Supports.  
NOTE: Orders are Non-Cancellable and Non-Returnable.



### CABLE SUPPORT BODIES

Malleable Iron - Zinc Plated with Phenolic Liner

Cat. No.	Trade Size	Unit Pkg.	Std. Pkg.	Dia	Height
CS-150B	1-1/2"	-	5	2.61	2.16
CS-200B	2"	2	10	3.13	2.25
CS-250B	2-1/2"	2	10	3.63	2.60
CS-300B	3"	2	10	4.25	2.75
CS-350B	3-1/2"	1	5	5.00	3.13
CS-400B	4"	1	5	5.50	3.38



### CABLE SUPPORT RETROFIT BODIES

Two Bakelite Body Sections with Stainless Steel Retaining Straps

Cat. No.	Trade Size	Unit Pkg.	Std. Pkg.	Dia	Height
CSR-200B	2"	3	15	4.77	2.30
CSR-250B	2-1/2"	1	10	5.32	2.70
CSR-300B	3"	1	10	5.96	2.85
CSR-350B	3-1/2"	1	5	6.63	3.33
CSR-400B	4"	1	5	7.26	3.58



# EMT FITTINGS

SET SCREW CONNECTORS  
& COUPLINGS

COMPRESSION CONNECTORS  
& COUPLINGS

COMBINATION COUPLINGS

SET SCREW CONDUIT BODIES

CONDUIT BODY COVERS & GASKETS

STRAPS

ELBOWS



300ST



### STEEL EMT SET SCREW CONNECTORS

Connects EMT conduit to a box or enclosure

**Features:** Concrete-tight when taped  
**Material:** Steel  
**Certifications:** cULus



STANDARD				INSULATED THROAT			
Catalog Number	Trade Size	Unit Pkg.	Standard Pkg.	Catalog Number	Trade Size	Unit Pkg.	Standard Pkg.
300ST	1/2"	50	500	300BST	1/2"	50	500
301ST	3/4"	25	250	301BST	3/4"	25	250
302ST	1"	50	200	302BST	1"	50	200
303ST	1 1/4"	25	100	303BST	1 1/4"	25	100
304ST	1 1/2"	10	40	304BST	1 1/2"	10	40
305ST	2"	5	20	305BST	2"	5	20
306ST	2 1/2"	-	12	306BST	2 1/2"	-	12
307ST	3"	-	12	307BST	3"	-	12
308ST	3 1/2"	-	6	308BST	3 1/2"	-	6
309ST	4"	-	6	309BST	4"	-	6

### STEEL EMT SET SCREW COUPLINGS

Connects two lengths of EMT conduit

**Features:** Concrete-tight when taped  
**Material:** Steel  
**Certifications:** cULus



Catalog Number	Trade Size	Unit Pkg.	Standard Pkg.	Catalog Number	Trade Size	Unit Pkg.	Standard Pkg.
310ST	1/2"	50	500	315ST	2"	5	20
311ST	3/4"	25	250	316ST	2 1/2"	-	12
312ST	1"	50	200	317ST	3"	-	12
313ST	1 1/4"	25	100	318ST	3 1/2"	-	6
314ST	1 1/2"	10	40	319ST	4"	-	6

### STEEL EMT COMPRESSION CONNECTORS

Connects EMT conduit to a box or enclosure

**Features:** Concrete-tight  
**Material:** Steel  
**Certifications:** cULus



STANDARD				INSULATED THROAT			
Catalog Number	Trade Size	Unit Pkg.	Standard Pkg.	Catalog Number	Trade Size	Unit Pkg.	Standard Pkg.
260ST	1/2"	50	500	260BST	1/2"	50	500
261ST	3/4"	25	250	261BST	3/4"	25	250
262ST	1"	50	200	262BST	1"	50	200
263ST	1 1/4"	25	100	263BST	1 1/4"	25	100
264ST	1 1/2"	10	40	264BST	1 1/2"	10	40
265ST	2"	5	20	265BST	2"	5	20
266ST	2 1/2"	-	12	266BST	2 1/2"	-	12
267ST	3"	-	12	267BST	3"	-	12
268ST	3 1/2"	-	6	268BST	3 1/2"	-	6
269ST	4"	-	6	269BST	4"	-	6

### STEEL EMT COMPRESSION COUPLINGS

Connects two lengths of EMT conduit

**Features:** Concrete-tight  
**Material:** Steel  
**Certifications:** cULus



Catalog Number	Trade Size	Unit Pkg.	Standard Pkg.	Catalog Number	Trade Size	Unit Pkg.	Standard Pkg.
320ST	1/2"	50	500	325ST	2"	5	20
321ST	3/4"	25	250	326ST	2 1/2"	-	12
322ST	1"	50	200	327ST	3"	-	12
323ST	1 1/4"	25	100	328ST	3 1/2"	-	6
324ST	1 1/2"	10	40	329ST	4"	-	6

### STEEL EMT RAINLIGHT COMPRESSION CONNECTORS

Connects EMT conduit to a box or enclosure for a raintight fit

**Features:** Suitable for wet locations, Concrete-tight  
**Material:** Steel  
**Certifications:** cULus



STANDARD				INSULATED THROAT			
Catalog Number	Trade Size	Unit Pkg.	Standard Pkg.	Catalog Number	Trade Size	Unit Pkg.	Standard Pkg.
260RST	1/2"	50	500	260RBST	1/2"	50	500
261RST	3/4"	25	250	261RBST	3/4"	25	250
262RST	1"	50	200	262RBST	1"	50	200
263RST	1 1/4"	25	100	263RBST	1 1/4"	25	100
264RST	1 1/2"	10	40	264RBST	1 1/2"	10	40
265RST	2"	5	20	265RBST	2"	5	20
266RST	2 1/2"	-	12	266RBST	2 1/2"	-	12
267RST	3"	-	12	267RBST	3"	-	12
268RST	3 1/2"	-	6	268RBST	3 1/2"	-	6
269RST	4"	-	6	269RBST	4"	-	6

### STEEL EMT RAINLIGHT COMPRESSION COUPLINGS

Connects two lengths of EMT conduit for a raintight fit

**Features:** Suitable for wet locations, Concrete-tight  
**Material:** Steel  
**Certifications:** cULus



Catalog Number	Trade Size	Unit Pkg.	Standard Pkg.	Catalog Number	Trade Size	Unit Pkg.	Standard Pkg.
320RST	1/2"	50	500	325RST	2"	5	20
321RST	3/4"	25	250	326RST	2 1/2"	-	12
322RST	1"	50	200	327RST	3"	-	12
323RST	1 1/4"	25	100	328RST	3 1/2"	-	6
324RST	1 1/2"	10	40	329RST	4"	-	6

## ZINC EMT SET SCREW CONNECTORS

Connects EMT conduit to a box or enclosure

**Features:** Concrete-tight when taped  
**Material:** Zinc  
**Certifications:** cULus



Catalog Number	Trade Size	Unit Pkg.	Standard Pkg.	Catalog Number	Trade Size	Unit Pkg.	Standard Pkg.
300	1/2"	50	500	305	2"	5	20
301	3/4"	25	250	306	2 1/2"	-	12
302	1"	50	200	307	3"	-	12
303	1 1/4"	25	100	308	3 1/2"	-	6
304	1 1/2"	10	40	309	4"	-	6

## ZINC EMT SET SCREW COUPLINGS

Connects two lengths of EMT conduit

**Features:** Concrete-tight when taped  
**Material:** Zinc  
**Certifications:** cULus



Catalog Number	Trade Size	Unit Pkg.	Standard Pkg.	Catalog Number	Trade Size	Unit Pkg.	Standard Pkg.
310	1/2"	50	500	315	2"	5	20
311	3/4"	25	250	316	2 1/2"	-	12
312	1"	50	200	317	3"	-	12
313	1 1/4"	25	100	318	3 1/2"	-	6
314	1 1/2"	10	40	319	4"	-	6

## ZINC EMT COMPRESSION CONNECTORS

Connects EMT conduit to a box or enclosure

**Features:** Concrete-tight  
**Material:** Zinc  
**Certifications:** cULus



Catalog Number	Trade Size	Unit Pkg.	Standard Pkg.	Catalog Number	Trade Size	Unit Pkg.	Standard Pkg.
260	1/2"	50	500	265	2"	5	20
261	3/4"	25	250	266	2 1/2"	-	12
262	1"	50	200	267	3"	-	12
263	1 1/4"	25	100	268	3 1/2"	-	6
264	1 1/2"	10	40	269	4"	-	6

## ZINC EMT COMPRESSION COUPLINGS

Connects two lengths of EMT conduit

**Features:** Concrete-tight  
**Material:** Zinc  
**Certifications:** cULus



Catalog Number	Trade Size	Unit Pkg.	Standard Pkg.	Catalog Number	Trade Size	Unit Pkg.	Standard Pkg.
320	1/2"	50	500	325	2"	5	20
321	3/4"	25	250	326	2 1/2"	-	12
322	1"	50	200	327	3"	-	12
323	1 1/4"	25	100	328	3 1/2"	-	6
324	1 1/2"	10	40	329	4"	-	6

## ZINC 90° SET SCREW CONNECTORS

Use to connect EMT conduit to a steel box or enclosure where a close radius is desired

**Features:** Concrete-tight when taped  
**Material:** Zinc  
**Certifications:** cULus



Catalog Number	Trade Size	Unit Pkg.	Standard Pkg.
300-90	1/2"	25	250
301-90	3/4"	20	200

## ZINC 90° COMPRESSION CONNECTORS

Use to connect EMT conduit to a steel box or enclosure where a close radius is desired

**Features:** Concrete-tight when taped  
**Material:** Zinc  
**Certifications:** cULus



Catalog Number	Trade Size	Unit Pkg.	Standard Pkg.
260-90	1/2"	25	250
261-90	3/4"	20	200

## EMT OFFSET CONNECTORS EMT TO BOX

Connects EMT conduit to box or enclosure

**Features:** Concrete-tight when taped  
**Material:** Zinc  
**Certifications:** cULus



Catalog Number	Trade Size	Unit Pkg.	Standard Pkg.
300-OC	1/2"	10	100
301-OC	3/4"	10	100
302-OC	1"	10	100

## COMBINATION COUPLINGS EMT TO FLEXIBLE CONDUIT

Connects EMT conduit to flexible metal conduit

**Features:** Set-screw to clamp type  
**Material:** Zinc  
**Certifications:** cULus

\*Product Approved for EMT to NM cable



Catalog Number	Trade Size	Unit Pkg.	Standard Pkg.
*685	1/2" EMT to 3/8" Flex	10	100
686	1/2" EMT to 1/2" Flex	10	100
687	3/4" EMT to 3/4" Flex	10	100

### COMBINATION COUPLINGS LIQUIDTIGHT TO EMT CONDUIT

Connects Liquidtight conduit to EMT conduit

**Features:** Liquidtight, Raintight, Oiltight  
**Material:** Steel  
**Certifications:** cULus



Catalog Number	Trade Size	Unit Pkg.	Standard Pkg.
RT-260	1/2"	25	250
RT-261	3/4"	20	200

### EMT INSIDE CORNER PULL ELBOWS

Connects 2 lengths of EMT conduit for a 90° inside corner bend

**Features:** Concrete-tight connection when taped  
**Material:** Zinc  
**Certifications:** cULus



Catalog Number	Trade Size	Unit Pkg.	Standard Pkg.
680EMT	1/2"	10	100
681EMT	3/4"	5	50

### EMT TO BOX 90° PULL ELBOW

Use to connect EMT conduit to a steel box or enclosure to form a 90° bend

**Features:** Removable cover facilitates wire pulling  
**Material:** Zinc  
**Certifications:** cULus



Catalog Number	Trade Size	Unit Pkg.	Standard Pkg.
650EMT	1/2"	10	100
651EMT	3/4"	5	50

### EMT TO EMT 90° PULL ELBOW

Use to connect EMT conduit together on a 90° bend

**Features:** Removable cover facilitates wire pulling  
**Material:** Zinc  
**Certifications:** cULus



Catalog Number	Trade Size	Unit Pkg.	Standard Pkg.
670EMT	1/2"	10	100
671EMT	3/4"	5	50
672EMT	1"	-	25

### RIGID AND EMT COMBO PULL ELBOWS

Connects 2 lengths of EMT or Rigid/IMC conduit for a 90° bend

**Features:** Threaded interior for use with Rigid/IMC conduit. Set screws for EMT conduit.  
**Material:** Zinc  
**Certifications:** cULus



Catalog Number	Trade Size	Unit Pkg.	Standard Pkg.
FCPE-50	1/2"	10	100
FCPE-75	3/4"	5	50
FCPE-100	1"	-	25
FCPE-125	1 1/4"	-	20

### RIGID AND EMT COMBO PULL ELBOWS TO BOX

Connects EMT or Rigid/IMC conduit to box or enclosure

**Features:** Threaded interior for use with Rigid/IMC conduit. Set screws for EMT conduit.  
**Material:** Zinc  
**Certifications:** cULus



Catalog Number	Trade Size	Unit Pkg.	Standard Pkg.
MCPE-50	1/2"	10	100
MCPE-75	3/4"	5	50
MCPE-100	1"	-	25
MCPE-125	1 1/4"	-	20

### EMT CONDUIT BODIES TYPE C - ALUMINUM

Allows access to the interior of a conduit system for inspection, pulling, and maintenance

**Features:** Threadless body with set screws for EMT conduit  
**Material:** Aluminum  
**Certifications:** cULus



Catalog Number	Trade Size	Unit Pkg.	Standard Pkg.	Catalog Number	Trade Size	Unit Pkg.	Standard Pkg.
C-50AE	1/2"	10	50	C-200AE	2"	-	5
C-75AE	3/4"	10	50	C-250AE	2 1/2"	-	1
C-100AE	1"	5	25	C-300AE	3"	-	1
C-125AE	1 1/4"	-	10	C-350AE	3 1/2"	-	1
C-150AE	1 1/2"	-	10	C-400AE	4"	-	1

### EMT CONDUIT BODIES TYPE LB - ALUMINUM

Allows access to the interior of a conduit system for inspection, pulling, and maintenance

**Features:** Threadless body with set screws for EMT conduit  
**Material:** Aluminum  
**Certifications:** cULus



Catalog Number	Trade Size	Unit Pkg.	Standard Pkg.	Catalog Number	Trade Size	Unit Pkg.	Standard Pkg.
LB-50AE	1/2"	10	50	LB-200AE	2"	-	5
LB-75AE	3/4"	10	50	LB-250AE	2 1/2"	-	1
LB-100AE	1"	5	25	LB-300AE	3"	-	1
LB-125AE	1 1/4"	-	10	LB-350AE	3 1/2"	-	1
LB-150AE	1 1/2"	-	10	LB-400AE	4"	-	1

### EMT CONDUIT BODIES TYPE LL - ALUMINUM

Allows access to the interior of a conduit system for inspection, pulling, and maintenance

**Features:** Threadless body with set screws for EMT conduit  
**Material:** Aluminum  
**Certifications:** cULus



Catalog Number	Trade Size	Unit Pkg.	Standard Pkg.	Catalog Number	Trade Size	Unit Pkg.	Standard Pkg.
LL-50AE	1/2"	10	50	LL-200AE	2"	-	5
LL-75AE	3/4"	10	50	LL-250AE	2 1/2"	-	1
LL-100AE	1"	5	25	LL-300AE	3"	-	1
LL-125AE	1 1/4"	-	10	LL-350AE	3 1/2"	-	1
LL-150AE	1 1/2"	-	10	LL-400AE	4"	-	1



## EMT CONDUIT BODIES TYPE LR - ALUMINUM

Allows access to the interior of a conduit system for inspection, pulling, and maintenance

**Features:** Threadless body with set screws for EMT conduit

**Material:** Aluminum

**Certifications:** cULus



Catalog Number	Trade Size	Unit Pkg.	Standard Pkg.	Catalog Number	Trade Size	Unit Pkg.	Standard Pkg.
LR-50AE	1/2"	10	50	LR-200AE	2"	-	5
LR-75AE	3/4"	10	50	LR-250AE	2 1/2"	-	1
LR-100AE	1"	5	25	LR-300AE	3"	-	1
LR-125AE	1 1/4"	-	10	LR-350AE	3 1/2"	-	1
LR-150AE	1 1/2"	-	10	LR-400AE	4"	-	1

## EMT CONDUIT BODIES TYPE T - ALUMINUM

Allows access to the interior of a conduit system for inspection, pulling, and maintenance

**Features:** Threadless body with set screws for EMT conduit

**Material:** Aluminum

**Certifications:** cULus



Catalog Number	Trade Size	Unit Pkg.	Standard Pkg.	Catalog Number	Trade Size	Unit Pkg.	Standard Pkg.
T-50AE	1/2"	10	50	T-200AE	2"	-	5
T-75AE	3/4"	10	50	T-250AE	2 1/2"	-	1
T-100AE	1"	5	25	T-300AE	3"	-	1
T-125AE	1 1/4"	-	10	T-350AE	3 1/2"	-	1
T-150AE	1 1/2"	-	10	T-400AE	4"	-	1

## EMT CONDUIT BODIES W/ COVER & GASKET - TYPE C - ALUMINUM

Allows access to the interior of a conduit system for inspection, pulling, and maintenance

**Features:** Threadless body with set screws for EMT conduit

**Material:** Aluminum

**Certifications:** cULus



Catalog Number	Trade Size	Unit Pkg.	Standard Pkg.	Catalog Number	Trade Size	Unit Pkg.	Standard Pkg.
CC-50AE	1/2"	10	50	CC-200AE	2"	-	5
CC-75AE	3/4"	10	50	CC-250AE	2 1/2"	-	1
CC-100AE	1"	5	25	CC-300AE	3"	-	1
CC-125AE	1 1/4"	-	10	CC-350AE	3 1/2"	-	1
CC-150AE	1 1/2"	-	10	CC-400AE	4"	-	1

## EMT CONDUIT BODIES W/ COVER & GASKET - TYPE LB - ALUMINUM

Allows access to the interior of a conduit system for inspection, pulling, and maintenance

**Features:** Threadless body with set screws for EMT conduit

**Material:** Aluminum

**Certifications:** cULus



Catalog Number	Trade Size	Unit Pkg.	Standard Pkg.	Catalog Number	Trade Size	Unit Pkg.	Standard Pkg.
LBC-50AE	1/2"	10	50	LBC-200AE	2"	-	5
LBC-75AE	3/4"	10	50	LBC-250AE	2 1/2"	-	1
LBC-100AE	1"	5	25	LBC-300AE	3"	-	1
LBC-125AE	1 1/4"	-	10	LBC-350AE	3 1/2"	-	1
LBC-150AE	1 1/2"	-	10	LBC-400AE	4"	-	1

## EMT CONDUIT BODIES W/ COVER & GASKET - TYPE LL - ALUMINUM

Allows access to the interior of a conduit system for inspection, pulling, and maintenance

**Features:** Threadless body with set screws for EMT conduit

**Material:** Aluminum

**Certifications:** cULus



Catalog Number	Trade Size	Unit Pkg.	Standard Pkg.	Catalog Number	Trade Size	Unit Pkg.	Standard Pkg.
LLC-50AE	1/2"	10	50	LLC-200AE	2"	-	5
LLC-75AE	3/4"	10	50	LLC-250AE	2 1/2"	-	1
LLC-100AE	1"	5	25	LLC-300AE	3"	-	1
LLC-125AE	1 1/4"	-	10	LLC-350AE	3 1/2"	-	1
LLC-150AE	1 1/2"	-	10	LLC-400AE	4"	-	1

## EMT CONDUIT BODIES W/ COVER & GASKET - TYPE LR - ALUMINUM

Allows access to the interior of a conduit system for inspection, pulling, and maintenance

**Features:** Threadless body with set screws for EMT conduit

**Material:** Aluminum

**Certifications:** cULus



Catalog Number	Trade Size	Unit Pkg.	Standard Pkg.	Catalog Number	Trade Size	Unit Pkg.	Standard Pkg.
LRC-50AE	1/2"	10	50	LRC-200AE	2"	-	5
LRC-75AE	3/4"	10	50	LRC-250AE	2 1/2"	-	1
LRC-100AE	1"	5	25	LRC-300AE	3"	-	1
LRC-125AE	1 1/4"	-	10	LRC-350AE	3 1/2"	-	1
LRC-150AE	1 1/2"	-	10	LRC-400AE	4"	-	1

## EMT CONDUIT BODIES W/ COVER & GASKET - TYPE T - ALUMINUM

Allows access to the interior of a conduit system for inspection, pulling, and maintenance

**Features:** Threadless body with set screws for EMT conduit

**Material:** Aluminum

**Certifications:** cULus



Catalog Number	Trade Size	Unit Pkg.	Standard Pkg.	Catalog Number	Trade Size	Unit Pkg.	Standard Pkg.
TC-50AE	1/2"	10	50	TC-200AE	2"	-	5
TC-75AE	3/4"	10	50	TC-250AE	2 1/2"	-	1
TC-100AE	1"	5	25	TC-300AE	3"	-	1
TC-125AE	1 1/4"	-	10	TC-350AE	3 1/2"	-	1
TC-150AE	1 1/2"	-	10	TC-400AE	4"	-	1

## COMBINATION CONDUIT BODIES W/COVER & GASKET TYPE C - ALUMINUM

Allows access for inspection, pulling, and maintenance

**Features:** Threaded body for Rigid/IMC conduit and set screws for EMT conduit

**Material:** Aluminum

**Certifications:** cULus



Catalog Number	Trade Size	Unit Pkg.	Standard Pkg.	Catalog Number	Trade Size	Unit Pkg.	Standard Pkg.
C-50CA	1/2"	10	50	C-125CA	1 1/4"	-	10
C-75CA	3/4"	10	50	C-150CA	1 1/2"	-	10
C-100CA	1"	5	25	C-200CA	2"	-	5

### COMBINATION CONDUIT BODIES W/COVER & GASKET TYPE LB - ALUMINUM

Allows access for inspection, pulling, and maintenance

**Features:** Threaded body for Rigid/IMC conduit and set screws for EMT conduit

**Material:** Aluminum

**Certifications:** cULus



Catalog Number	Trade Size	Unit Pkg.	Standard Pkg.
LB-50CA	1/2"	10	50
LB-75CA	3/4"	10	50
LB-100CA	1"	5	25
LB-125CA	1 1/4"	-	10
LB-150CA	1 1/2"	-	10
LB-200CA	2"	-	5

### COMBINATION CONDUIT BODIES W/COVER & GASKET TYPE LL - ALUMINUM

Allows access for inspection, pulling, and maintenance

**Features:** Threaded body for Rigid/IMC conduit and set screws for EMT conduit

**Material:** Aluminum

**Certifications:** cULus



Catalog Number	Trade Size	Unit Pkg.	Standard Pkg.
LL-50CA	1/2"	10	50
LL-75CA	3/4"	10	50
LL-100CA	1"	5	25
LL-125CA	1 1/4"	-	10
LL-150CA	1 1/2"	-	10
LL-200CA	2"	-	5

### COMBINATION CONDUIT BODIES W/COVER & GASKET TYPE LR - ALUMINUM

Allows access for inspection, pulling, and maintenance

**Features:** Threaded body for Rigid/IMC conduit and set screws for EMT conduit

**Material:** Aluminum

**Certifications:** cULus



Catalog Number	Trade Size	Unit Pkg.	Standard Pkg.
LR-50CA	1/2"	10	50
LR-75CA	3/4"	10	50
LR-100CA	1"	5	25
LR-125CA	1 1/4"	-	10
LR-150CA	1 1/2"	-	10
LR-200CA	2"	-	5

### COMBINATION CONDUIT BODIES W/COVER & GASKET TYPE T - ALUMINUM

Allows access for inspection, pulling, and maintenance

**Features:** Threaded body for Rigid/IMC conduit and set screws for EMT conduit

**Material:** Aluminum

**Certifications:** cULus



Catalog Number	Trade Size	Unit Pkg.	Standard Pkg.
T-50CA	1/2"	10	50
T-75CA	3/4"	10	50
T-100CA	1"	5	25
T-125CA	1 1/4"	-	10
T-150CA	1 1/2"	-	10
T-200CA	2"	-	5

### CONDUIT BODY COVERS STEEL

Encloses conduit body

**Features:** Supplied with screws

**Material:** Steel

**Certifications:** cULus



Catalog Number	Trade Size	Unit Pkg.	Standard Pkg.
SC-50	1/2"	25	250
SC-75	3/4"	25	250
SC-100	1"	20	250
SC-125	1 1/4" to 1 1/2"	25	100
SC-200	2"	-	50
SC-250	2 1/2" to 3"	-	10
SC-350	3 1/2" to 4"	-	10

### CONDUIT BODY COVERS ALUMINUM

Encloses conduit body

**Features:** Supplied with screws

**Material:** Aluminum

**Certifications:** cULus



Catalog Number	Trade Size	Unit Pkg.	Standard Pkg.
AC-50	1/2"	25	250
AC-75	3/4"	25	250
AC-100	1"	20	250
AC-125	1 1/4" to 1 1/2"	25	100
AC-200	2"	-	50
AC-250	2 1/2" to 3"	-	10
AC-350	3 1/2" to 4"	-	10

### CONDUIT BODY GASKETS NEOPRENE

Provides dust and raintight seal between conduit body and cover

**Features:** Fits all form 5 body types

**Material:** Neoprene



Catalog Number	Trade Size	Unit Pkg.	Standard Pkg.
VG-50	1/2"	25	250
VG-75	3/4"	25	250
VG-100	1"	20	250
VG-125	1 1/4" to 1 1/2"	25	100
VG-200	2"	-	50
VG-250	2 1/2" to 3"	-	10
VG-350	3 1/2" to 4"	-	10

**CONDUIT BODY WIRE FILL CHART**

**Die Cast Aluminum Conduit Bodies**

Trade Size	Maximum Number of Conductors				
	LB	C	LL	LR	T
1/2"	N/A	N/A	N/A	N/A	N/A
3/4"	6 AWG	6 AWG	6 AWG	6 AWG	6 AWG
1"	3 - 4 AWG	3 - 4 AWG	3 - 4 AWG	3 - 4 AWG	3 - 4 AWG
1 1/4"	3 - 2 AWG	3 - 2 AWG	3 - 2 AWG	3 - 2 AWG	3 - 2 AWG
1 1/2"	3 - 1/0 AWG	3 - 1/0 AWG	3 - 1/0 AWG	3 - 1/0 AWG	3 - 2 AWG
2"	3 - 4/0 AWG	3 - 2/0 AWG	3 - 4/0 AWG	3 - 4/0 AWG	3 - 4/0 AWG
2 1/2"	300 MCM	3 - 250 MCM	3 - 250 MCM	3 - 250 MCM	3 - 2/0 AWG
3"	350 MCM	3 - 250 MCM	3 - 250 MCM	3 - 250 MCM	3 - 250 MCM
3 1/2"	3 - 400 MCM	3 - 250 MCM	3 - 250 MCM	3 - 250 MCM	3 - 250 MCM
4"	3 - 400 MCM	3 - 250 MCM	3 - 250 MCM	3 - 250 MCM	3 - 250 MCM

Trade Size	Volume in Cu. In.				
	LB	C	LL	LR	T
1/2"	4.25	4.25	4.25	4.25	4.25
3/4"	7.2	7.2	7.2	7.2	7.2
1"	10.8	10.8	10.8	10.8	10.8
1 1/4"	30.5	30.5	30.5	30.5	30.5
1 1/2"	30.5	30.5	30.5	30.5	30.5
2"	70.7	70.7	70.7	70.7	70.7
2 1/2"	152.5	157.4	157.4	157.4	157.4
3"	152.5	179.8	179.8	179.8	179.8
3 1/2"	311.8	323.0	323.0	323.0	323.0
4"	311.8	323.0	323.0	323.0	323.0

**Malleable Iron Conduit Bodies**

Trade Size	Maximum Number of Conductors				
	LB	C	LL	LR	T
1/2"	N/A	N/A	N/A	N/A	N/A
3/4"	3 - 6 AWG	3 - 6 AWG	3 - 6 AWG	3 - 6 AWG	3 - 6 AWG
1"	3 - 4 AWG	3 - 4 AWG	3 - 4 AWG	3 - 4 AWG	3 - 4 AWG
1 1/4"	3 - 2 AWG	3 - 2 AWG	3 - 2 AWG	3 - 2 AWG	3 - 2 AWG
1 1/2"	3 - 1/0 AWG	3 - 1/0 AWG	3 - 1/0 AWG	3 - 1/0 AWG	3 - 1 AWG
2"	3 - 3/0 AWG	3 - 4/0 AWG	3 - 4/0 AWG	3 - 4/0 AWG	3 - 2/0 AWG
2 1/2"	3 - 250 MCM	3 - 300 MCM	3 - 300 MCM	3 - 300 MCM	3 - 4/0 AWG
3"	3 - 250 MCM	3 - 350 MCM	3 - 350 MCM	3 - 350 MCM	3 - 4/0 AWG
3 1/2"	3 - 350 MCM	3 - 350 MCM	3 - 350 MCM	3 - 500 MCM	3 - 350 MCM
4"	3 - 350 MCM	3 - 350 MCM	3 - 350 MCM	3 - 500 MCM	3 - 350 MCM

Trade Size	Volume in Cu. In.				
	LB	C	LL	LR	T
1/2"	4.5	4.5	4.5	4.5	6.0
3/4"	7.5	7.5	7.5	7.5	9.5
1"	12.5	12.5	12.5	12.5	15.0
1 1/4"	32.3	32.3	32.3	32.3	33.0
1 1/2"	35.3	35.3	35.3	35.3	36.0
2"	73.0	73.0	73.0	73.0	75.0
2 1/2"	138.0	138.0	138.0	138.0	138.0
3"	170.0	170.0	170.0	170.0	170.0
3 1/2"	300.0	300.0	300.0	300.0	300.0
4"	328.0	328.0	328.0	328.0	328.0

**DISCOVER THE PECO DIFFERENCE**



**EXTENSIVE INVENTORY + FAST TURNAROUND**



### EMT 90° CONDUIT ELBOWS

Provides a directional change in an EMT conduit run



**Features:** Low conductivity, high corrosion resistance  
**Material:** Steel  
**Certifications:** cULus



Catalog Number	Trade Size	Radius Min	Length of Straight Min.	Offset Min.	Standard Pkg.
ELB-9050	1/2"	4"	1 1/2"	5 1/2"	50
ELB-9075	3/4"	4 1/2"	1 1/2"	6"	50
ELB-90100	1"	5 3/4"	1 7/8"	7 5/8"	25
ELB-90125	1 1/4"	7 1/4"	2"	9 1/4"	20
ELB-90150	1 1/2"	8 1/4"	2"	10 1/4"	15
ELB-90200	2"	9 1/2"	2"	11 1/2"	10
ELB-90250	2 1/2"	10 1/2"	3"	13 1/2"	1
ELB-90300	3"	13"	3 1/8"	16 1/8"	1
ELB-90350	3 1/2"	15"	3 1/4"	18 1/4"	1
ELB-90400	4"	16"	3 3/8"	19 3/8"	1

### EMT 45° CONDUIT ELBOWS

Provides a directional change in an EMT conduit run



**Features:** Low conductivity, high corrosion resistance  
**Material:** Steel  
**Certifications:** cULus



Catalog Number	Trade Size	Radius Min	Length of Straight Min.	Offset Min.	Standard Pkg.
ELB-4550	1/2"	4"	1 1/2"	5 3/8"	50
ELB-4575	3/4"	4 1/2"	1 1/2"	5 3/4"	50
ELB-45100	1"	5 3/4"	1 7/8"	7 1/4"	25
ELB-45125	1 1/4"	7 1/4"	2"	8 1/2"	20
ELB-45150	1 1/2"	8 1/4"	2"	9 1/4"	15
ELB-45200	2"	9 1/2"	2"	10 1/8"	10
ELB-45250	2 1/2"	10 1/2"	3"	12 1/2"	1
ELB-45300	3"	13"	3 1/8"	14 1/2"	1
ELB-45350	3 1/2"	15"	3 1/4"	16 1/8"	1
ELB-45400	4"	16"	3 3/8"	17 1/8"	1

### EMT 15° CONDUIT ELBOWS

Provides a directional change in an EMT conduit run



**Features:** Low conductivity, high corrosion resistance  
**Material:** Steel  
**Certifications:** cULus



Catalog Number	Trade Size	Radius Min	Straight Leg Each End	Standard Pkg.
ELB-15125	1 1/4"	7 1/4"	2.781"	30
ELB-15150	1 1/2"	8 1/4"	2.781"	15
ELB-15200	2"	9 1/2"	2.781"	10
ELB-15250	2 1/2"	10 1/2"	3"	1
ELB-15300	3"	13"	3.125"	1
ELB-15350	3 1/2"	15"	3.281"	1
ELB-15400	4"	16"	3.375"	1

### EMT 22.5° CONDUIT ELBOWS

Provides a directional change in an EMT conduit run



**Features:** Low conductivity, high corrosion resistance  
**Material:** Steel  
**Certifications:** cULus



Catalog Number	Trade Size	Radius Min	Straight Leg Each End	Standard Pkg.
ELB-22125	1 1/4"	7 1/4"	2.781"	30
ELB-22150	1 1/2"	8 1/4"	2.781"	15
ELB-22200	2"	9 1/2"	2.781"	10
ELB-22250	2 1/2"	10 1/2"	3"	1
ELB-22300	3"	13"	3.125"	1
ELB-22350	3 1/2"	15"	3.281"	1
ELB-22400	4"	16"	3.375"	1

### EMT 30° CONDUIT ELBOWS

Provides a directional change in an EMT conduit run



**Features:** Low conductivity, high corrosion resistance  
**Material:** Steel  
**Certifications:** cULus



Catalog Number	Trade Size	Radius Min	Straight Leg Each End	Standard Pkg.
ELB-30125	1 1/4"	7 1/4"	2.781"	30
ELB-30150	1 1/2"	8 1/4"	2.781"	15
ELB-30200	2"	9 1/2"	2.781"	10
ELB-30250	2 1/2"	10 1/2"	3"	1
ELB-30300	3"	13"	3.125"	1
ELB-30350	3 1/2"	15"	3.281"	1
ELB-30400	4"	16"	3.375"	1

### EMT STRAPS- ONE HOLE

Supports EMT conduit to mounting surface



**Features:** Reinforced snap-on feature  
**Material:** Steel  
**Certifications:** cULus  
 \* Dual rated for EMT and Rigid



Catalog Number	Trade Size	Unit Pkg.	Standard Pkg.	Catalog Number	Trade Size	Unit Pkg.	Standard Pkg.
180-S	1/2"	100	1,000	185-S	2"	-	50
181-S	3/4"	100	1,000	*168-S	2 1/2"	-	25
182-S	1"	50	500	*169-S	3"	-	25
183-S	1 1/4"	50	500	*170-S	3 1/2"	-	10
184-S	1 1/2"	50	250	*171-S	4"	-	10

### EMT STRAPS- TWO HOLE

Supports EMT conduit to mounting surface



**Features:** Reinforced snap-on feature  
**Material:** Steel  
**Certifications:** cULus  
 \* Dual rated for EMT and Rigid



Catalog Number	Trade Size	Unit Pkg.	Standard Pkg.	Catalog Number	Trade Size	Unit Pkg.	Standard Pkg.
TH-180S	1/2"	-	250	TH-185S	2"	-	25
TH-181S	3/4"	-	200	*TH-168S	2 1/2"	-	25
TH-182S	1"	-	100	*TH-169S	3"	-	25
TH-183S	1 1/4"	-	50	*TH-170S	3 1/2"	-	10
TH-184S	1 1/2"	-	50	*TH-171S	4"	-	10

# RIGID/IMC FITTINGS

THREADED CONDUIT BODIES  
CONDUIT BODY COVERS & GASKETS  
SET SCREW CONNECTORS  
& COUPLINGS  
COMPRESSION CONNECTORS  
& COUPLINGS  
WATERTIGHT HUBS  
THREE-PIECE COUPLINGS  
SLIP-ON COUPLINGS  
COMBINATION COUPLINGS  
ELBOWS & COUPLINGS  
BUSHINGS & STRAPS  
CLAMP BACKS  
REDUCERS, LOCKNUTS & ELBOWS  
NIPPLES & OFFSET NIPPLES  
PLUGS  
FLOOR FLANGE  
MALE ENLARGER



T-50M

### THREADED CONDUIT BODIES TYPE C - ALUMINUM

Allows access to the interior of a conduit system for inspection, pulling, and maintenance



**Features:** Threaded body and Caps Rigid/IMC conduit

**Material:** Aluminum

**Certifications:** cULus



Catalog Number	Trade Size	Unit Pkg.	Standard Pkg.	Catalog Number	Trade Size	Unit Pkg.	Standard Pkg.
C-50A	1/2"	10	50	C-200A	2"	-	5
C-75A	3/4"	10	50	C-250A	2 1/2"	-	1
C-100A	1"	5	25	C-300A	3"	-	1
C-125A	1 1/4"	-	10	C-350A	3 1/2"	-	1
C-150A	1 1/2"	-	10	C-400A	4"	-	1

### THREADED CONDUIT BODIES TYPE LB - ALUMINUM

Allows access to the interior of a conduit system for inspection, pulling, and maintenance



**Features:** Threaded body and Caps Rigid/IMC conduit

**Material:** Aluminum

**Certifications:** cULus



Catalog Number	Trade Size	Unit Pkg.	Standard Pkg.	Catalog Number	Trade Size	Unit Pkg.	Standard Pkg.
LB-50A	1/2"	10	50	LB-200A	2"	-	5
LB-75A	3/4"	10	50	LB-250A	2 1/2"	-	1
LB-100A	1"	5	25	LB-300A	3"	-	1
LB-125A	1 1/4"	-	10	LB-350A	3 1/2"	-	1
LB-150A	1 1/2"	-	10	LB-400A	4"	-	1

### THREADED CONDUIT BODIES TYPE LL - ALUMINUM

Allows access to the interior of a conduit system for inspection, pulling, and maintenance



**Features:** Threaded body and Caps Rigid/IMC conduit

**Material:** Aluminum

**Certifications:** cULus



Catalog Number	Trade Size	Unit Pkg.	Standard Pkg.	Catalog Number	Trade Size	Unit Pkg.	Standard Pkg.
LL-50A	1/2"	10	50	LL-200A	2"	-	5
LL-75A	3/4"	10	50	LL-250A	2 1/2"	-	1
LL-100A	1"	5	25	LL-300A	3"	-	1
LL-125A	1 1/4"	-	10	LL-350A	3 1/2"	-	1
LL-150A	1 1/2"	-	10	LL-400A	4"	-	1

### THREADED CONDUIT BODIES TYPE LR - ALUMINUM

Allows access to the interior of a conduit system for inspection, pulling, and maintenance



**Features:** Threaded body and Caps Rigid/IMC conduit

**Material:** Aluminum

**Certifications:** cULus



Catalog Number	Trade Size	Unit Pkg.	Standard Pkg.	Catalog Number	Trade Size	Unit Pkg.	Standard Pkg.
LR-50A	1/2"	10	50	LR-200A	2"	-	5
LR-75A	3/4"	10	50	LR-250A	2 1/2"	-	1
LR-100A	1"	5	25	LR-300A	3"	-	1
LR-125A	1 1/4"	-	10	LR-350A	3 1/2"	-	1
LR-150A	1 1/2"	-	10	LR-400A	4"	-	1

### THREADED CONDUIT BODIES TYPE T - ALUMINUM

Allows access to the interior of a conduit system for inspection, pulling, and maintenance



**Features:** Threaded body and Caps Rigid/IMC conduit

**Material:** Aluminum

**Certifications:** cULus



Catalog Number	Trade Size	Unit Pkg.	Standard Pkg.	Catalog Number	Trade Size	Unit Pkg.	Standard Pkg.
T-50A	1/2"	10	50	T-200A	2"	-	5
T-75A	3/4"	10	50	T-250A	2 1/2"	-	1
T-100A	1"	5	25	T-300A	3"	-	1
T-125A	1 1/4"	-	10	T-350A	3 1/2"	-	1
T-150A	1 1/2"	-	10	T-400A	4"	-	1

### THREADED CONDUIT BODIES W/COVER & GASKET - TYPE C ALUMINUM

Allows access to the interior of a conduit system for inspection, pulling, and maintenance



**Features:** Threaded body and Caps Rigid/IMC conduit

**Material:** Aluminum

**Certifications:** cULus



Catalog Number	Trade Size	Unit Pkg.	Standard Pkg.	Catalog Number	Trade Size	Unit Pkg.	Standard Pkg.
CC-50A	1/2"	10	50	CC-200A	2"	-	5
CC-75A	3/4"	10	50	CC-250A	2 1/2"	-	1
CC-100A	1"	5	25	CC-300A	3"	-	1
CC-125A	1 1/4"	-	10	CC-350A	3 1/2"	-	1
CC-150A	1 1/2"	-	10	CC-400A	4"	-	1



## THREADED CONDUIT BODIES W/COVER & GASKET TYPE LB - ALUMINUM

Allows access to the interior of a conduit system for inspection, pulling, and maintenance



**Features:** Threaded body and Caps Rigid/IMC conduit

**Material:** Aluminum  
**Certifications:** cULus



Catalog Number	Trade Size	Unit Pkg.	Standard Pkg.	Catalog Number	Trade Size	Unit Pkg.	Standard Pkg.
LBC-50A	1/2"	10	50	LBC-200A	2"	-	5
LBC-75A	3/4"	10	50	LBC-250A	2 1/2"	-	1
LBC-100A	1"	5	25	LBC-300A	3"	-	1
LBC-125A	1 1/4"	-	10	LBC-350A	3 1/2"	-	1
LBC-150A	1 1/2"	-	10	LBC-400A	4"	-	1

## THREADED CONDUIT BODIES W/COVER & GASKET TYPE LL - ALUMINUM

Allows access to the interior of a conduit system for inspection, pulling, and maintenance



**Features:** Threaded body and Caps Rigid/IMC conduit

**Material:** Aluminum  
**Certifications:** cULus



Catalog Number	Trade Size	Unit Pkg.	Standard Pkg.	Catalog Number	Trade Size	Unit Pkg.	Standard Pkg.
LLC-50A	1/2"	10	50	LLC-200A	2"	-	5
LLC-75A	3/4"	10	50	LLC-250A	2 1/2"	-	1
LLC-100A	1"	5	25	LLC-300A	3"	-	1
LLC-125A	1 1/4"	-	10	LLC-350A	3 1/2"	-	1
LLC-150A	1 1/2"	-	10	LLC-400A	4"	-	1

## THREADED CONDUIT BODIES W/COVER & GASKET - TYPE LR ALUMINUM

Allows access to the interior of a conduit system for inspection, pulling, and maintenance



**Features:** Threaded body and Caps Rigid/IMC conduit

**Material:** Aluminum  
**Certifications:** cULus



Catalog Number	Trade Size	Unit Pkg.	Standard Pkg.	Catalog Number	Trade Size	Unit Pkg.	Standard Pkg.
LRC-50A	1/2"	10	50	LRC-200A	2"	-	5
LRC-75A	3/4"	10	50	LRC-250A	2 1/2"	-	1
LRC-100A	1"	5	25	LRC-300A	3"	-	1
LRC-125A	1 1/4"	-	10	LRC-350A	3 1/2"	-	1
LRC-150A	1 1/2"	-	10	LRC-400A	4"	-	1

## THREADED CONDUIT BODIES W/COVER & GASKET TYPE T - ALUMINUM

Allows access to the interior of a conduit system for inspection, pulling, and maintenance



**Features:** Threaded body and Caps Rigid/IMC conduit

**Material:** Aluminum  
**Certifications:** cULus



Catalog Number	Trade Size	Unit Pkg.	Standard Pkg.	Catalog Number	Trade Size	Unit Pkg.	Standard Pkg.
TC-50A	1/2"	10	50	TC-200A	2"	-	5
TC-75A	3/4"	10	50	TC-250A	2 1/2"	-	1
TC-100A	1"	5	25	TC-300A	3"	-	1
TC-125A	1 1/4"	-	10	TC-350A	3 1/2"	-	1
TC-150A	1 1/2"	-	10	TC-400A	4"	-	1

## COMBINATION CONDUIT BODIES W/COVER & GASKET TYPE C - ALUMINUM

Allows access for inspection, pulling, and maintenance



**Features:** Threaded body for Rigid/IMC conduit and set screws for EMT conduit

**Material:** Aluminum  
**Certifications:** cULus



Catalog Number	Trade Size	Unit Pkg.	Standard Pkg.
C-50CA	1/2"	10	50
C-75CA	3/4"	10	50
C-100CA	1"	5	25
C-125CA	1 1/4"	-	10
C-150CA	1 1/2"	-	10
C-200CA	2"	-	5

## COMBINATION CONDUIT BODIES W/COVER & GASKET TYPE LB - ALUMINUM

Allows access for inspection, pulling, and maintenance



**Features:** Threaded body for Rigid/IMC conduit and set screws for EMT conduit

**Material:** Aluminum  
**Certifications:** cULus



Catalog Number	Trade Size	Unit Pkg.	Standard Pkg.
LB-50CA	1/2"	10	50
LB-75CA	3/4"	10	50
LB-100CA	1"	5	25
LB-125CA	1 1/4"	-	10
LB-150CA	1 1/2"	-	10
LB-200CA	2"	-	5

### COMBINATION CONDUIT BODIES W/COVER & GASKET - TYPE LL ALUMINUM

Allows access for inspection, pulling, and maintenance

**Features:** Threaded body for Rigid/IMC conduit and set screws for EMT conduit

**Material:** Aluminum

**Certifications:** cULus



Catalog Number	Trade Size	Unit Pkg.	Standard Pkg.
LL-50CA	1/2"	10	50
LL-75CA	3/4"	10	50
LL-100CA	1"	5	25
LL-125CA	1 1/4"	-	10
LL-150CA	1 1/2"	-	10
LL-200CA	2"	-	5

### COMBINATION CONDUIT BODIES W/COVER & GASKET - TYPE LR ALUMINUM

Allows access for inspection, pulling, and maintenance

**Features:** Threaded body for Rigid/IMC conduit and set screws for EMT conduit

**Material:** Aluminum

**Certifications:** cULus



Catalog Number	Trade Size	Unit Pkg.	Standard Pkg.
LR-50CA	1/2"	10	50
LR-75CA	3/4"	10	50
LR-100CA	1"	5	25
LR-125CA	1 1/4"	-	10
LR-150CA	1 1/2"	-	10
LR-200CA	2"	-	5

### COMBINATION CONDUIT BODIES W/COVER & GASKET - TYPE T ALUMINUM

Allows access for inspection, pulling, and maintenance

**Features:** Threaded body for Rigid/IMC conduit and set screws for EMT conduit

**Material:** Aluminum

**Certifications:** cULus



Catalog Number	Trade Size	Unit Pkg.	Standard Pkg.
T-50CA	1/2"	10	50
T-75CA	3/4"	10	50
T-100CA	1"	5	25
T-125CA	1 1/4"	-	10
T-150CA	1 1/2"	-	10
T-200CA	2"	-	5

### THREADED CONDUIT BODIES TYPE C - MALLEABLE IRON

Allows access to the interior of a conduit system for inspection, pulling, and maintenance

**Features:** Threaded body for Rigid/IMC conduit

**Material:** Malleable Iron

**Certifications:** cULus



Catalog Number	Trade Size	Unit Pkg.	Standard Pkg.	Catalog Number	Trade Size	Unit Pkg.	Standard Pkg.
C-50M	1/2"	10	50	C-200M	2"	-	5
C-75M	3/4"	10	50	C-250M	2 1/2"	-	1
C-100M	1"	5	25	C-300M	3"	-	1
C-125M	1 1/4"	-	10	C-350M	3 1/2"	-	1
C-150M	1 1/2"	-	10	C-400M	4"	-	1

### THREADED CONDUIT BODIES TYPE LB - MALLEABLE IRON

Allows access to the interior of a conduit system for inspection, pulling, and maintenance

**Features:** Threaded body for Rigid/IMC conduit

**Material:** Malleable Iron

**Certifications:** cULus



Catalog Number	Trade Size	Unit Pkg.	Standard Pkg.	Catalog Number	Trade Size	Unit Pkg.	Standard Pkg.
LB-50M	1/2"	10	50	LB-200M	2"	-	5
LB-75M	3/4"	10	50	LB-250M	2 1/2"	-	1
LB-100M	1"	5	25	LB-300M	3"	-	1
LB-125M	1 1/4"	-	10	LB-350M	3 1/2"	-	1
LB-150M	1 1/2"	-	10	LB-400M	4"	-	1

### THREADED CONDUIT BODIES TYPE LL - MALLEABLE IRON

Allows access to the interior of a conduit system for inspection, pulling, and maintenance

**Features:** Threaded body for Rigid/IMC conduit

**Material:** Malleable Iron

**Certifications:** cULus



Catalog Number	Trade Size	Unit Pkg.	Standard Pkg.	Catalog Number	Trade Size	Unit Pkg.	Standard Pkg.
LL-50M	1/2"	10	50	LL-200M	2"	-	5
LL-75M	3/4"	10	50	LL-250M	2 1/2"	-	1
LL-100M	1"	5	25	LL-300M	3"	-	1
LL-125M	1 1/4"	-	10	LL-350M	3 1/2"	-	1
LL-150M	1 1/2"	-	10	LL-400M	4"	-	1

### THREADED CONDUIT BODIES TYPE LR - MALLEABLE IRON

Allows access to the interior of a conduit system for inspection, pulling, and maintenance

**Features:** Threaded body for Rigid/IMC conduit

**Material:** Malleable Iron

**Certifications:** cULus



Catalog Number	Trade Size	Unit Pkg.	Standard Pkg.	Catalog Number	Trade Size	Unit Pkg.	Standard Pkg.
LR-50M	1/2"	10	50	LR-200M	2"	-	5
LR-75M	3/4"	10	50	LR-250M	2 1/2"	-	1
LR-100M	1"	5	25	LR-300M	3"	-	1
LR-125M	1 1/4"	-	10	LR-350M	3 1/2"	-	1
LR-150M	1 1/2"	-	10	LR-400M	4"	-	1

### THREADED CONDUIT BODIES TYPE T - MALLEABLE IRON

Allows access to the interior of a conduit system for inspection, pulling, and maintenance

**Features:** Threaded body for Rigid/IMC conduit

**Material:** Malleable Iron

**Certifications:** cULus



Catalog Number	Trade Size	Unit Pkg.	Standard Pkg.	Catalog Number	Trade Size	Unit Pkg.	Standard Pkg.
T-50M	1/2"	10	50	T-200M	2"	-	5
T-75M	3/4"	10	50	T-250M	2 1/2"	-	1
T-100M	1"	5	25	T-300M	3"	-	1
T-125M	1 1/4"	-	10	T-350M	3 1/2"	-	1
T-150M	1 1/2"	-	10	T-400M	4"	-	1

## CONDUIT BODY COVERS STEEL

Encloses conduit body

**Features:** Supplied with screws

**Material:** Steel

**Certifications:** cULus



Catalog Number	Trade Size	Unit Pkg.	Standard Pkg.
SC-50	1/2"	25	250
SC-75	3/4"	25	250
SC-100	1"	20	250
SC-125	1 1/4" to 1 1/2"	25	100
SC-200	2"	-	50
SC-250	2 1/2" to 3"	-	10
SC-350	3 1/2" to 4"	-	10



## CONDUIT BODY COVERS ALUMINUM

Encloses conduit body

**Features:** Supplied with screws

**Material:** Aluminum

**Certifications:** cULus



Catalog Number	Trade Size	Unit Pkg.	Standard Pkg.
AC-50	1/2"	25	250
AC-75	3/4"	25	250
AC-100	1"	20	250
AC-125	1 1/4" to 1 1/2"	25	100
AC-200	2"	-	50
AC-250	2 1/2" to 3"	-	10
AC-350	3 1/2" to 4"	-	10



## CONDUIT BODY GASKETS NEOPRENE

Provides dust and raintight seal between conduit body and cover

**Features:** Fits all form 5 body types

**Material:** Neoprene



Catalog Number	Trade Size	Unit Pkg.	Standard Pkg.
VG-50	1/2"	25	250
VG-75	3/4"	25	250
VG-100	1"	20	250
VG-125	1 1/4" to 1 1/2"	25	100
VG-200	2"	-	50
VG-250	2 1/2" to 3"	-	10
VG-350	3 1/2" to 4"	-	10

## CONDUIT BODY WIRE FILL CHART

### Die Cast Aluminum Conduit Bodies

Maximum Number of Conductors

Trade Size	LB	C	LL	LR	T
1/2"	N/A	N/A	N/A	N/A	N/A
3/4"	6 AWG	6 AWG	6 AWG	6 AWG	6 AWG
1"	3 - 4 AWG	3 - 4 AWG	3 - 4 AWG	3 - 4 AWG	3 - 4 AWG
1 1/4"	3 - 2 AWG	3 - 2 AWG	3 - 2 AWG	3 - 2 AWG	3 - 2 AWG
1 1/2"	3 - 1/0 AWG	3 - 1/0 AWG	3 - 1/0 AWG	3 - 1/0 AWG	3 - 2 AWG
2"	3 - 4/0 AWG	3 - 2/0 AWG	3 - 4/0 AWG	3 - 4/0 AWG	3 - 4/0 AWG
2 1/2"	300 MCM	3 - 250 MCM	3 - 250 MCM	3 - 250 MCM	3 - 2/0 AWG
3"	350 MCM	3 - 250 MCM	3 - 250 MCM	3 - 250 MCM	3 - 250 MCM
3 1/2"	3 - 400 MCM	3 - 250 MCM	3 - 250 MCM	3 - 250 MCM	3 - 250 MCM
4"	3 - 400 MCM	3 - 250 MCM	3 - 250 MCM	3 - 250 MCM	3 - 250 MCM

Volume in Cu. In.

Trade Size	LB	C	LL	LR	T
1/2"	4.25	4.25	4.25	4.25	4.25
3/4"	7.2	7.2	7.2	7.2	7.2
1"	10.8	10.8	10.8	10.8	10.8
1 1/4"	30.5	30.5	30.5	30.5	30.5
1 1/2"	30.5	30.5	30.5	30.5	30.5
2"	70.7	70.7	70.7	70.7	70.7
2 1/2"	152.5	157.4	157.4	157.4	157.4
3"	152.5	179.8	179.8	179.8	179.8
3 1/2"	311.8	323.0	323.0	323.0	323.0
4"	311.8	323.0	323.0	323.0	323.0

### Malleable Iron Conduit Bodies

Maximum Number of Conductors

Trade Size	LB	C	LL	LR	T
1/2"	N/A	N/A	N/A	N/A	N/A
3/4"	3 - 6 AWG	3 - 6 AWG	3 - 6 AWG	3 - 6 AWG	3 - 6 AWG
1"	3 - 4 AWG	3 - 4 AWG	3 - 4 AWG	3 - 4 AWG	3 - 4 AWG
1 1/4"	3 - 2 AWG	3 - 2 AWG	3 - 2 AWG	3 - 2 AWG	3 - 2 AWG
1 1/2"	3 - 1/0 AWG	3 - 1/0 AWG	3 - 1/0 AWG	3 - 1/0 AWG	3 - 1 AWG
2"	3 - 3/0 AWG	3 - 4/0 AWG	3 - 4/0 AWG	3 - 4/0 AWG	3 - 2/0 AWG
2 1/2"	3 - 250 MCM	3 - 300 MCM	3 - 300 MCM	3 - 300 MCM	3 - 4/0 AWG
3"	3 - 250 MCM	3 - 350 MCM	3 - 350 MCM	3 - 350 MCM	3 - 4/0 AWG
3 1/2"	3 - 350 MCM	3 - 350 MCM	3 - 350 MCM	3 - 500 MCM	3 - 350 MCM
4"	3 - 350 MCM	3 - 350 MCM	3 - 350 MCM	3 - 500 MCM	3 - 350 MCM

Volume in Cu. In.

Trade Size	LB	C	LL	LR	T
1/2"	4.5	4.5	4.5	4.5	6.0
3/4"	7.5	7.5	7.5	7.5	9.5
1"	12.5	12.5	12.5	12.5	15.0
1 1/4"	32.3	32.3	32.3	32.3	33.0
1 1/2"	35.3	35.3	35.3	35.3	36.0
2"	73.0	73.0	73.0	73.0	75.0
2 1/2"	138.0	138.0	138.0	138.0	138.0
3"	170.0	170.0	170.0	170.0	170.0
3 1/2"	300.0	300.0	300.0	300.0	300.0
4"	328.0	328.0	328.0	328.0	328.0



### RIGID SET SCREW CONNECTORS MALLEABLE IRON

Connects threadless Rigid/IMC conduit to box or enclosure

**Features:** Concrete-tight when taped  
**Material:** Malleable Iron  
**Certifications:** cULus



Catalog Number	Trade Size	Unit Pkg.	Standard Pkg.	Catalog Number	Trade Size	Unit Pkg.	Standard Pkg.
970MA	1/2"	25	250	975MA	2"	2	10
971MA	3/4"	25	100	976MA	2 1/2"	2	10
972MA	1"	5	25	977MA	3"	1	5
973MA	1 1/4"	5	25	978MA	3 1/2"	-	5
974MA	1 1/2"	5	20	979MA	4"	-	5

### RIGID SET SCREW COUPLINGS MALLEABLE IRON

Connects two lengths of threadless Rigid/IMC conduit

**Features:** Concrete-tight when taped  
**Material:** Malleable Iron  
**Certifications:** cULus



Catalog Number	Trade Size	Unit Pkg.	Standard Pkg.	Catalog Number	Trade Size	Unit Pkg.	Standard Pkg.
990MA	1/2"	20	100	995MA	2"	2	10
991MA	3/4"	20	100	996MA	2 1/2"	2	10
992MA	1"	5	50	997MA	3"	1	5
993MA	1 1/4"	5	25	998MA	3 1/2"	1	5
994MA	1 1/2"	5	20	999MA	4"	1	5

### RIGID COMPRESSION CONNECTORS MALLEABLE IRON

Connects threadless Rigid/IMC conduit to box or enclosure

**Features:** Concrete-tight  
**Material:** Malleable Iron  
**Certifications:** cULus



Catalog Number	Trade Size	Unit Pkg.	Standard Pkg.	Catalog Number	Trade Size	Unit Pkg.	Standard Pkg.
960MA	1/2"	25	250	965MA	2"	5	25
961MA	3/4"	25	250	966MA	2 1/2"	1	10
962MA	1"	10	100	967MA	3"	1	5
963MA	1 1/4"	5	50	968MA	3 1/2"	1	5
964MA	1 1/2"	2	20	969MA	4"	1	5

### RIGID COMPRESSION COUPLINGS MALLEABLE IRON

Connects two lengths of threadless Rigid/IMC conduit

**Features:** Concrete-tight  
**Material:** Malleable Iron  
**Certifications:** cULus



Catalog Number	Trade Size	Unit Pkg.	Standard Pkg.	Catalog Number	Trade Size	Unit Pkg.	Standard Pkg.
980MA	1/2"	20	100	985MA	2"	2	10
981MA	3/4"	20	100	986MA	2 1/2"	2	10
982MA	1"	5	50	987MA	3"	1	5
983MA	1 1/4"	5	25	988MA	3 1/2"	1	5
984MA	1 1/2"	5	20	989MA	4"	1	5

### RIGID COMPRESSION CONNECTORS- STEEL

Use to connect threadless Rigid/IMC conduit to a box or enclosure

**Features:** Concrete-tight  
**Material:** Steel  
**Certifications:** cULus



Catalog Number	Trade Size	Unit Pkg.	Standard Pkg.	Catalog Number	Trade Size	Unit Pkg.	Standard Pkg.
960	1/2"	25	250	963	1 1/4"	5	50
961	3/4"	25	250	964	1 1/2"	5	20
962	1"	10	100	965	2"	5	25

### RIGID COMPRESSION COUPLINGS - STEEL

Connects two unthreaded lengths of Rigid/IMC conduit

**Features:** Concrete-tight  
**Material:** Steel  
**Certifications:** cULus



Catalog Number	Trade Size	Unit Pkg.	Standard Pkg.	Catalog Number	Trade Size	Unit Pkg.	Standard Pkg.
980	1/2"	25	250	983	1 1/4"	5	50
981	3/4"	10	100	984	1 1/2"	2	20
982	1"	5	50	985	2"	4	20

### RIGID RAIN TIGHT COMPRESSION CONNECTORS

Compression type connector used to join unthreaded steel Rigid conduit to a box or enclosure in a wet location

**Features:** Raintight & concrete tight. Suitable for use with UL 6 & UL6 A rigid conduit. Threadless for steel or aluminum conduit. Zinc plated.  
**Material:** Steel- 1/2" to 2"  
 Malleable Iron- 2 1/2" to 4"  
**Certifications:** cULus



Catalog Number	Trade Size	Unit Pkg.	Standard Pkg.	Catalog Number	Trade Size	Unit Pkg.	Standard Pkg.
960RT	1/2"	25	250	965RT	2"	5	25
961RT	3/4"	25	100	966MART	2 1/2"	1	10
962RT	1"	10	100	967MART	3"	1	5
963RT	1 1/4"	5	50	968MART	3 1/2"	1	5
964RT	1 1/2"	2	20	969MART	4"	1	5

### RIGID RAIN TIGHT COMPRESSION COUPLINGS

Use to join two lengths of Rigid/IMC conduit in a wet location

**Features:** Raintight & concrete tight. Suitable for use with UL 6 & UL6 A rigid conduit. Threadless for steel or aluminum conduit. Zinc plated.  
**Material:** Steel- 1/2" to 2"  
 Malleable Iron- 2 1/2" to 4"  
**Certifications:** cULus



Catalog Number	Trade Size	Unit Pkg.	Standard Pkg.	Catalog Number	Trade Size	Unit Pkg.	Standard Pkg.
980RT	1/2"	25	250	985RT	2"	5	25
981RT	3/4"	25	100	986MART	2 1/2"	1	10
982RT	1"	10	100	987MART	3"	1	5
983RT	1 1/4"	5	50	988MART	3 1/2"	1	5
984RT	1 1/2"	2	20	989MART	4"	1	5

## WATERTIGHT HUBS ZINC DIE CAST

To connect Rigid/IMC conduit to a box or enclosure where a watertight joint is required

**Features:** Raintight, Oiltight, Dust tight w/insulated throat

**Material:** Zinc

**Certifications:** cULus



Catalog Number	Trade Size	Unit Pkg.	Standard Pkg.	Catalog Number	Trade Size	Unit Pkg.	Standard Pkg.
WH-1	1/2"	25	250	WH-6	2"	2	20
WH-2	3/4"	25	250	WH-7	2 1/2"	-	10
WH-3	1"	10	100	WH-8	3"	-	10
WH-4	1 1/4"	5	25	WH-9	3 1/2"	-	5
WH-5	1 1/2"	2	20	WH-10	4"	-	5

## WATERTIGHT HUBS MALLEABLE IRON

To connect Rigid/IMC conduit to a box or enclosure where a watertight joint is required

**Features:** Raintight, Oiltight, Dust tight w/insulated throat

**Material:** Malleable Iron

**Certifications:** cULus



Catalog Number	Trade Size	Unit Pkg.	Standard Pkg.	Catalog Number	Trade Size	Unit Pkg.	Standard Pkg.
WH-1M	1/2"	25	250	WH-6M	2"	2	20
WH-2M	3/4"	25	250	WH-7M	2 1/2"	-	10
WH-3M	1"	10	100	WH-8M	3"	-	10
WH-4M	1 1/4"	5	25	WH-9M	3 1/2"	-	5
WH-5M	1 1/2"	2	20	WH-10M	4"	-	5

## RIGID THREE-PIECE COUPLINGS

Connects two lengths of Rigid/IMC conduit when conduit cannot be turned

**Features:** Concrete-tight

**Material:** Malleable Iron

**Certifications:** cULus



Catalog Number	Trade Size	Unit Pkg.	Standard Pkg.	Catalog Number	Trade Size	Unit Pkg.	Standard Pkg.
370	1/2"	25	100	376	2 1/2"	-	10
371	3/4"	20	200	377	3"	-	10
372	1"	10	100	378	3 1/2"	-	5
373	1 1/4"	5	100	379	4"	-	5
374	1 1/2"	4	25	381	5"	-	1
375	2"	4	20	382	6"	-	1

## COMBINATION COUPLINGS RIGID TO LIQUIDTIGHT

Connects Liquidtight conduit to Rigid/IMC conduit

**Features:** Liquidtight, Raintight, Oiltight

**Material:** Steel

**Certifications:** cULus



Catalog Number	Trade Size	Unit Pkg.	Standard Pkg.	Catalog Number	Trade Size	Unit Pkg.	Standard Pkg.
RTCC-50	1/2"	20	200	RTCC-75	3/4"	10	100

## RIGID CONDUIT COUPLINGS

Use to join and ensure proper alignment of threaded Rigid/IMC conduit

**Features:** NPSM thread

**Material:** Steel

**Certifications:** cULus



Catalog Number	Trade Size	Unit Pkg.	Standard Pkg.	Catalog Number	Trade Size	Unit Pkg.	Standard Pkg.
P105	1/2"	10	100	P120	2"	5	25
P107	3/4"	5	50	P125	2 1/2"	-	12
P110	1"	5	50	P130	3"	-	12
P112	1 1/4"	5	25	P135	3 1/2"	-	6
P115	1 1/2"	5	25	P140	4"	-	6

## SLIP-ON COUPLINGS

To join two lengths of threaded Rigid/IMC conduit

**Features:** Neoprene gasket provides a concrete seal at the joint

**Material:** Malleable Iron

**Certifications:** cULus



Catalog Number	Trade Size	Unit Pkg.	Standard Pkg.	Catalog Number	Trade Size	Unit Pkg.	Standard Pkg.
375SPC	2"	5	25	379SPC	4"	1	5
376SPC	2 1/2"	2	20	381SPC	5"	-	1
377SPC	3"	2	20	382SPC	6"	-	1
378SPC	3 1/2"	1	5				

## RIGID 90° CONDUIT ELBOWS

Provides a directional change in a Rigid conduit run

**Features:** Low conductivity, high corrosion resistance

**Material:** Steel

**Certifications:** cULus



Catalog Number	Trade Size	Radius Min	Length of Straight Min.	Offset Min.	Standard Pkg.
RLB-9050	1/2"	4"	1 1/2"	5 1/2"	50
RLB-9075	3/4"	4 1/2"	1 1/2"	6"	50
RLB-90100	1"	5 3/4"	1 7/8"	7 5/8"	25
RLB-90125	1 1/4"	7 1/4"	2"	9 1/4"	20
RLB-90150	1 1/2"	8 1/4"	2"	10 1/4"	15
RLB-90200	2"	9 1/2"	2"	11 1/2"	10
RLB-90250	2 1/2"	10 1/2"	3"	13 1/2"	1
RLB-90300	3"	13"	3 1/8"	16 1/8"	1
RLB-90350	3 1/2"	15"	3 1/4"	18 1/4"	1
RLB-90400	4"	16"	3 3/8"	19 3/8"	1

### RIGID 45° CONDUIT ELBOWS

Provides a directional change in a Rigid conduit run

**Features:** Low conductivity, high corrosion resistance

**Material:** Steel

**Certifications:** cULus



Catalog Number	Trade Size	Radius Min	Length of Straight Min.	Offset Min.	Standard Pkg.
RLB-4550	1/2"	4"	1 1/2"	5 3/8"	50
RLB-4575	3/4"	4 1/2"	1 1/2"	5 3/4"	50
RLB-45100	1"	5 3/4"	1 7/8"	7 1/4"	25
RLB-45125	1 1/4"	7 1/4"	2"	8 1/2"	20
RLB-45150	1 1/2"	8 1/4"	2"	9 1/4"	15
RLB-45200	2"	9 1/2"	2"	10 1/8"	10
RLB-45250	2 1/2"	10 1/2"	3"	12 1/2"	1
RLB-45300	3"	13"	3 1/8"	14 1/2"	1
RLB-45350	3 1/2"	15"	3 1/4"	16 1/8"	1
RLB-45400	4"	16"	3 3/8"	17 1/8"	1

### RIGID 15° CONDUIT ELBOWS

Provides a directional change in a Rigid conduit run

**Features:** Low conductivity, high corrosion resistance

**Material:** Steel

**Certifications:** cULus



Catalog Number	Trade Size	Radius Min	Straight Leg Each End	Standard Pkg.
RLB-15125	1 1/4"	7 1/4"	2.781"	20
RLB-15150	1 1/2"	8 1/4"	2.781"	15
RLB-15200	2"	9 1/2"	2.781"	10
RLB-15250	2 1/2"	10 1/2"	3"	1
RLB-15300	3"	13"	3.125"	1
RLB-15350	3 1/2"	15"	3.281"	1
RLB-15400	4"	16"	3.375"	1

### RIGID 22.5° CONDUIT ELBOWS

Provides a directional change in Rigid conduit run

**Features:** Low conductivity, high corrosion resistance

**Material:** Steel

**Certifications:** cULus



Catalog Number	Trade Size	Radius Min	Straight Leg Each End	Standard Pkg.
RLB-22125	1 1/4"	7 1/4"	2.781"	20
RLB-22150	1 1/2"	8 1/4"	2.781"	15
RLB-22200	2"	9 1/2"	2.781"	10
RLB-22250	2 1/2"	10 1/2"	3"	1
RLB-22300	3"	13"	3.125"	1
RLB-22350	3 1/2"	15"	3.281"	1
RLB-22400	4"	16"	3.375"	1

### RIGID 30° CONDUIT ELBOWS

Provides a directional change in a Rigid conduit run

**Features:** Low conductivity, high corrosion resistance

**Material:** Steel

**Certifications:** cULus



Catalog Number	Trade Size	Radius Min	Straight Leg Each End	Standard Pkg.
RLB-30125	1 1/4"	7 1/4"	2.781"	20
RLB-30150	1 1/2"	8 1/4"	2.781"	15
RLB-30200	2"	9 1/2"	2.781"	10
RLB-30250	2 1/2"	10 1/2"	3"	1
RLB-22300	3"	13"	3.125"	1
RLB-30350	3 1/2"	15"	3.281"	1
RLB-30400	4"	16"	3.375"	1

### RIGID CONDUIT NIPPLES

Extends a conduit system or connects two steel boxes or other metal enclosure

**Features:** Threaded on both ends

**Material:** Steel

**Certifications:** cULus



#### 1/2" TRADE SIZE

Catalog Number	Length	Standard Pkg.	Catalog Number	Length	Standard Pkg.
P10500	CLOSE	25	P10550	5"	25
P10515	1 1/2"	25	P10560	6"	25
P10520	2"	25	P10580	8"	25
P10525	2 1/2"	25	P10510	10"	25
P10530	3"	25	P10512	12"	25
P10540	4"	25			

### RIGID CONDUIT NIPPLES

Extends a conduit system or connects two steel boxes or other metal enclosure

**Features:** Threaded on both ends

**Material:** Steel

**Certifications:** cULus



#### 3/4" TRADE SIZE

Catalog Number	Length	Standard Pkg.	Catalog Number	Length	Standard Pkg.
P10700	CLOSE	25	P10750	5"	25
P10715	1 1/2"	25	P10760	6"	25
P10720	2"	25	P10780	8"	25
P10725	2 1/2"	25	P10710	10"	25
P10730	3"	25	P10712	12"	25
P10740	4"	25			

### RIGID CONDUIT NIPPLES

Extends a conduit system or connects two steel boxes or other metal enclosure

**Features:** Threaded on both ends

**Material:** Steel

**Certifications:** cULus



#### 1" TRADE SIZE

Catalog Number	Length	Standard Pkg.	Catalog Number	Length	Standard Pkg.
P11000	CLOSE	25	P11060	6"	25
P11020	2"	25	P11080	8"	25
P11030	3"	25	P11010	10"	25
P11040	4"	25	P11012	12"	25
P11050	5"	25			

### RIGID CONDUIT NIPPLES

Extends a conduit system or connects two steel boxes or other metal enclosure

**Features:** Threaded on both ends

**Material:** Steel

**Certifications:** cULus



#### 1 1/4" TRADE SIZE

Catalog Number	Length	Standard Pkg.	Catalog Number	Length	Standard Pkg.
P11200	CLOSE	25	P11260	6"	25
P11220	2"	25	P11280	8"	25
P11230	3"	25	P11210	10"	25
P11240	4"	25	P11212	12"	25
P11250	5"	25			



## RIGID CONDUIT NIPPLES

Extends a conduit system or connects two steel boxes or other metal enclosure

**Features:** Threaded on both ends

**Material:** Steel

**Certifications:** cULus



### 1 1/2" TRADE SIZE

Catalog Number	Length	Standard Pkg.	Catalog Number	Length	Standard Pkg.
P11500	CLOSE	25	P11560	6"	25
P11520	2"	25	P11580	8"	25
P11530	3"	25	P11510	10"	25
P11540	4"	25	P11512	12"	20
P11550	5"	25			

## RIGID CONDUIT NIPPLES

Extends a conduit system or connects two steel boxes or other metal enclosure

**Features:** Threaded on both ends

**Material:** Steel

**Certifications:** cULus



### 2" TRADE SIZE

Catalog Number	Length	Standard Pkg.	Catalog Number	Length	Standard Pkg.
P12000	CLOSE	25	P12060	6"	25
P12025	2 1/2"	25	P12080	8"	25
P12030	3"	25	P12010	10"	10
P12040	4"	25	P12012	12"	10
P12050	5"	25			

## RIGID CONDUIT NIPPLES

Extends a conduit system or connects two steel boxes or other metal enclosure

**Features:** Threaded on both ends

**Material:** Steel

**Certifications:** cULus



### 2 1/2" TRADE SIZE

Catalog Number	Length	Standard Pkg.	Catalog Number	Length	Standard Pkg.
P12500	CLOSE	10	P12560	6"	10
P12530	3"	10	P12580	8"	10
P12540	4"	10	P12510	10"	5
P12550	5"	10	P12512	12"	5

## RIGID CONDUIT NIPPLES

Extends a conduit system or connects two steel boxes or other metal enclosure

**Features:** Threaded on both ends

**Material:** Steel

**Certifications:** cULus



### 3" TRADE SIZE

Catalog Number	Length	Standard Pkg.	Catalog Number	Length	Standard Pkg.
P13000	CLOSE	10	P13060	6"	10
P13030	3"	10	P13080	8"	5
P13040	4"	10	P13010	10"	5
P13050	5"	10	P13012	12"	5

## RIGID CONDUIT NIPPLES

Extends a conduit system or connects two steel boxes or other metal enclosure

**Features:** Threaded on both ends

**Material:** Steel

**Certifications:** cULus



### 3 1/2" TRADE SIZE

Catalog Number	Length	Standard Pkg.	Catalog Number	Length	Standard Pkg.
P13500	CLOSE	10	P13580	8"	3
P13540	4"	6	P13510	10"	3
P13550	5"	6	P13512	12"	3
P13560	6"	5			

## RIGID CONDUIT NIPPLES

Extends a conduit system or connects two steel boxes or other metal enclosure

**Features:** Threaded on both ends

**Material:** Steel

**Certifications:** cULus



### 4" TRADE SIZE

Catalog Number	Length	Standard Pkg.	Catalog Number	Length	Standard Pkg.
P14000	CLOSE	10	P14080	8"	3
P14040	4"	6	P14010	10"	3
P14050	5"	6	P14012	12"	3
P14060	6"	5			

## INSULATED MALLEABLE IRON GROUNDING BUSHINGS - W/ LAY-IN LUG

Use with locknut to terminate service conduit to a cabinet

**Features:** For use with either copper or aluminum grounding conductor

**Material:** Malleable Iron

**Certifications:** cULus



Catalog Number	Trade Size	Unit Pkg.	Standard Pkg.	Catalog Number	Trade Size	Unit Pkg.	Standard Pkg.
MIGB-80M	1/2"	100	1,000	MIGB-86M	2 1/2"	-	10
MIGB-81M	3/4"	50	500	MIGB-87M	3"	-	10
MIGB-82M	1"	25	250	MIGB-88M	3 1/2"	-	10
MIGB-83M	1 1/4"	25	250	MIGB-89M	4"	-	10
MIGB-84M	1 1/2"	25	250	MIGB-101M	5"	-	5
MIGB-85M	2"	25	250	MIGB-102M	6"	-	5

## INSULATED ZINC GROUNDING BUSHINGS - W/LAY-IN LUG

Use with locknut to terminate service conduit to a cabinet

**Features:** For use with either copper or aluminum grounding conductor

**Material:** Zinc

**Certifications:** cULus



Catalog Number	Trade Size	Unit Pkg.	Standard Pkg.	Catalog Number	Trade Size	Unit Pkg.	Standard Pkg.
ZIGB-50	1/2"	100	1,000	ZIGB-200	2"	25	250
ZIGB-75	3/4"	50	500	ZIGB-250	2 1/2"	-	10
ZIGB-100	1"	25	250	ZIGB-300	3"	-	10
ZIGB-125	1 1/4"	25	250	ZIGB-350	3 1/2"	-	10
ZIGB-150	1 1/2"	25	250	ZIGB-400	4"	-	10

### INSULATED BUSHINGS MALLEABLE IRON

Use with locknut to terminate threaded Rigid/IMC conduit to an outlet

**Features:** Insulated liner rated at 150° C  
**Material:** Malleable Iron  
**Certifications:** cULus



Catalog Number	Trade Size	Unit Pkg.	Standard Pkg.	Catalog Number	Trade Size	Unit Pkg.	Standard Pkg.
MIB-90M	1/2"	100	1,000	MIB-96M	2 1/2"	-	25
MIB-91M	3/4"	100	1,000	MIB-97M	3"	-	25
MIB-92M	1"	50	500	MIB-98M	3 1/2"	-	25
MIB-93M	1 1/4"	25	250	MIB-99M	4"	-	25
MIB-94M	1 1/2"	25	250	MIB-101M	5"	-	10
MIB-95M	2"	25	100	MIB-102M	6"	-	10

### INSULATING BUSHINGS PLASTIC

Use with locknut to terminate threaded Rigid/IMC conduit to an outlet

**Features:** Rated flame retardant to 105° C  
**Material:** Polypropylene  
**Certifications:** UL



Catalog Number	Trade Size	Unit Pkg.	Standard Pkg.	Catalog Number	Trade Size	Unit Pkg.	Standard Pkg.
501	1/2"	100	1,000	507	2 1/2"	-	25
502	3/4"	100	1,000	508	3"	-	25
503	1"	50	500	509	3 1/2"	-	25
504	1 1/4"	25	250	510	4"	-	25
505	1 1/2"	25	250	512	5"	-	5
506	2"	10	100	513	6"	-	5

### RIGID ONE HOLE STRAPS STEEL

Supports Rigid/IMC conduit to mounting surface

**Features:** Reinforced snap-on feature  
**Material:** Steel  
**Certifications:** cULus  
\* Dual rated for EMT and Rigid



Catalog Number	Trade Size	Unit Pkg.	Standard Pkg.	Catalog Number	Trade Size	Unit Pkg.	Standard Pkg.
160-S	1/4"	100	1,000	166-S	1 1/2"	50	250
161-S	3/8"	100	1,000	167-S	2"	-	50
162-S	1/2"	100	1,000	*168-S	2 1/2"	-	25
163-S	3/4"	100	1,000	*169-S	3"	-	25
164-S	1"	50	500	*170-S	3 1/2"	-	10
165-S	1 1/4"	50	500	*171-S	4"	-	10

### RIGID TWO HOLE STRAPS STEEL

Supports Rigid/IMC conduit to mounting surface

**Features:** Reinforced snap-on feature  
**Material:** Steel  
**Certifications:** cULus  
\* Dual rated for EMT and Rigid



Catalog Number	Trade Size	Unit Pkg.	Standard Pkg.	Catalog Number	Trade Size	Unit Pkg.	Standard Pkg.
TH-161S	3/8"	50	500	*TH-168S	2 1/2"	-	25
TH-162S	1/2"	-	250	*TH-169S	3"	-	25
TH-163S	3/4"	-	200	*TH-170S	3 1/2"	-	10
TH-164S	1"	-	100	*TH-171S	4"	-	10
TH-165S	1 1/4"	-	50	TH-173S	5"	-	10
TH-166S	1 1/2"	-	50	TH-174S	6"	-	10
TH-167S	2"	-	25				

### RIGID ONE HOLE STRAPS MALLEABLE IRON

Supports Rigid/IMC conduit to mounting surface

**Features:** Heavy duty casting  
**Material:** Malleable Iron  
**Certifications:** cULus



Catalog Number	Trade Size	Unit Pkg.	Standard Pkg.	Catalog Number	Trade Size	Unit Pkg.	Standard Pkg.
162	1/2"	100	1,000	167	2"	-	50
163	3/4"	100	1,000	168	2 1/2"	-	25
164	1"	50	500	169	3"	-	25
165	1 1/4"	50	500	170	3 1/2"	-	25
166	1 1/2"	-	50	171	4"	-	10

### RIGID CLAMP BACK SPACERS

Provides space between conduit and mounting surface

**Features:** Extensive size range for multiple specifications  
**Material:** Malleable Iron  
**Certifications:** cULus



Catalog Number	Trade Size	Unit Pkg.	Standard Pkg.	Catalog Number	Trade Size	Unit Pkg.	Standard Pkg.
282	1/2"	100	1,000	287	2"	10	50
283	3/4"	100	500	288	2 1/2"	-	25
284	1"	50	500	289	3"	-	25
285	1 1/4"	50	250	290	3 1/2"	-	10
286	1 1/2"	20	100	291	4"	-	10

### REDUCING BUSHINGS - STEEL

Use to reduce the size of internal female threads

**Features:** Rounded bushing protects conductors  
**Material:** Steel  
**Certifications:** cULus



Catalog Number	Trade Size	Standard Pkg.	Catalog Number	Trade Size	Standard Pkg.
RB50-38	1/2" x 3/8"	200	RB150-75	1 1/2" x 3/4"	50
RB75-50	3/4" x 1/2"	200	RB150-100	1 1/2" x 1"	50
RB100-50	1" x 1/2"	100	RB150-125	1 1/2" x 1 1/4"	50
RB100-75	1" x 3/4"	100	RB200-50	2" x 1/2"	25
RB125-50	1 1/4" x 1/2"	50	RB200-75	2" x 3/4"	25
RB125-75	1 1/4" x 3/4"	50	RB200-100	2" x 1"	25
RB125-100	1 1/4" x 1"	50	RB200-125	2" x 1 1/4"	25
RB150-50	1 1/2" x 1/2"	50	RB200-150	2" x 1 1/2"	25

### REDUCING BUSHINGS MALLEABLE IRON

Serves as short raceway between enclosures when used with a locknut

**Features:** Rounded bushing protects conductors  
**Material:** Malleable Iron  
**Certifications:** cULus



Catalog Number	Trade Size	Standard Pkg.	Catalog Number	Trade Size	Standard Pkg.
RB250-100	2 1/2" x 1"	10	RB300-250	3" x 2 1/2"	10
RB250-125	2 1/2" x 1 1/4"	10	RB350-200	3 1/2" x 2"	5
RB250-150	2 1/2" x 1 1/2"	10	RB350-250	3 1/2" x 2 1/2"	5
RB250-200	2 1/2" x 2"	10	RB350-300	3 1/2" x 3"	5
RB300-100	3" x 1"	10	RB400-200	4" x 2"	5
RB300-125	3" x 1 1/4"	10	RB400-250	4" x 2 1/2"	5
RB300-150	3" x 1 1/2"	10	RB400-300	4" x 3"	5
RB300-200	3" x 2"	10	RB400-350	4" x 3 1/2"	5

## REDUCING WASHERS

To be used to reduce the size of knockout holes

**Material:** Steel  
**Certifications:** cULus



Catalog Number	Trade Size	Unit Pkg.	Standard Pkg.	Catalog Number	Trade Size	Unit Pkg.	Standard Pkg.
RW75-50	3/4" x 1/2"	250	2,500	RW300-100	3" x 1"	25	250
RW100-50	1" x 1/2"	250	2,500	RW300-125	3" x 1 1/4"	25	250
RW100-75	1" x 3/4"	250	2,500	RW300-150	3" x 1 1/2"	25	250
RW125-50	1 1/4" x 1/2"	100	1,000	RW300-200	3" x 2"	25	250
RW125-75	1 1/4" x 3/4"	100	1,000	RW300-250	3" x 2 1/2"	25	250
RW125-100	1 1/4" x 1"	100	1,000	RW350-50	3 1/2" x 1/2"	10	100
RW150-50	1 1/2" x 1/2"	100	1,000	RW350-75	3 1/2" x 3/4"	10	100
RW150-75	1 1/2" x 3/4"	100	1,000	RW350-100	3 1/2" x 1"	10	100
RW150-100	1 1/2" x 1"	100	1,000	RW350-125	3 1/2" x 1 1/4"	10	100
RW150-125	1 1/2" x 1 1/4"	100	1,000	RW350-150	3 1/2" x 1 1/2"	10	100
RW200-50	2" x 1/2"	50	500	RW350-200	3 1/2" x 2"	10	100
RW200-75	2" x 3/4"	50	500	RW350-250	3 1/2" x 2 1/2"	10	100
RW200-100	2" x 1"	50	500	RW350-300	3 1/2" x 3"	10	100
RW200-125	2" x 1 1/4"	50	500	RW400-50	4" x 1/2"	10	100
RW200-150	2" x 1 1/2"	50	500	RW400-75	4" x 3/4"	10	100
RW250-50	2 1/2" x 1/2"	50	500	RW400-100	4" x 1"	10	100
RW250-75	2 1/2" x 3/4"	50	500	RW400-125	4" x 1 1/4"	10	100
RW250-100	2 1/2" x 1"	50	500	RW400-150	4" x 1 1/2"	10	100
RW250-125	2 1/2" x 1 1/4"	50	500	RW400-200	4" x 2"	10	100
RW250-150	2 1/2" x 1 1/2"	50	500	RW400-250	4" x 2 1/2"	10	100
RW250-200	2 1/2" x 2"	50	500	RW400-300	4" x 3"	10	100
RW300-50	3" x 1/2"	25	250	RW400-350	4" x 3 1/2"	10	100
RW300-75	3" x 3/4"	25	250				

## CONDUIT LOCKNUTS

Use to fasten threaded conduit to an opening in a box or enclosure

**Features:** Tightens without deforming  
**Material:** Steel  
\* Square fixture nut  
\*\* Square panel nut



Catalog Number	Trade Size	Unit Pkg.	Standard Pkg.	Catalog Number	Trade Size	Unit Pkg.	Standard Pkg.
*199	1/4"	100	3,000	206	2"	50	500
**200	3/8"	250	2,500	207	2 1/2"	50	250
201	1/2"	100	3,000	208	3"	50	250
202	3/4"	100	1,000	209	3 1/2"	25	125
203	1"	100	1,000	210	4"	25	125
204	1 1/4"	100	1,000	212	5"	-	10
205	1 1/2"	100	1,000	213	6"	-	10

## SEALING LOCKNUTS

Provides a raintight seal when fastening threaded conduit to threadless opening in a box or enclosure

**Features:** Zinc plate with molded PVC gasket for a watertight seal  
**Material:** Steel/Neoprene Gasket  
**Certifications:** cULus



Catalog Number	Trade Size	Unit Pkg.	Standard Pkg.	Catalog Number	Trade Size	Unit Pkg.	Standard Pkg.
201SL	1/2"	100	1,000	206SL	2"	25	100
202SL	3/4"	50	500	207SL	2 1/2"	20	100
203SL	1"	25	250	208SL	3"	10	50
204SL	1 1/4"	25	250	209SL	3 1/2"	10	50
205SL	1 1/2"	25	100	210SL	4"	5	25

## GROUNDING LOCKNUTS

Use to fasten threaded conduit to an opening in a box or enclosure

**Features:** For use in harsh vibration environments  
**Material:** Steel  
**Certifications:** cULus



Catalog Number	Trade Size	Unit Pkg.	Standard Pkg.	Catalog Number	Trade Size	Unit Pkg.	Standard Pkg.
GL-50	1/2"	100	1,000	GL-250	2 1/2"	10	100
GL-75	3/4"	100	1,000	GL-300	3"	10	100
GL-100	1"	50	500	GL-350	3 1/2"	10	100
GL-125	1 1/4"	50	500	GL-400	4"	10	100
GL-150	1 1/2"	50	500	GL-500	5"	-	10
GL-200	2"	25	250				

## RIGID TO BOX 90° PULL ELBOWS

Connects threaded Rigid/IMC conduit to a steel box or enclosure for a 90° bend

**Features:** Removable cover facilitates wire pulling  
**Material:** Zinc  
**Certifications:** cULus



Catalog Number	Trade Size	Unit Pkg.	Standard Pkg.
650	1/2"	10	100
651	3/4"	5	50

## RIGID TO RIGID 90° PULL ELBOWS

Connects threaded Rigid/IMC conduit to a steel box or enclosure for a 90° bend

**Features:** Removable cover facilitates wire pulling  
**Material:** Zinc  
**Certifications:** cULus



Catalog Number	Trade Size	Unit Pkg.	Standard Pkg.
670	1/2"	10	100
671	3/4"	5	50
672	1"	-	25
673	1 1/4"	-	20

## RIGID AND EMT COMBO PULL ELBOWS

Connects 2 lengths of EMT or Rigid/IMC conduit for a 90° bend

**Features:** Threaded interior for use with Rigid/IMC conduit. Set screws for EMT conduit.  
**Material:** Zinc  
**Certifications:** cULus



Catalog Number	Trade Size	Unit Pkg.	Standard Pkg.
FCPE-50	1/2"	10	100
FCPE-75	3/4"	5	50
FCPE-100	1"	-	25
FCPE-125	1 1/4"	-	20



### RIGID AND EMT COMBO PULL ELBOWS TO BOX

Connects EMT or Rigid/IMC conduit to box or enclosure

**Features:** Threaded interior for use with Rigid/IMC conduit. Set screws for EMT conduit.

**Material:** Zinc

**Certifications:** cULus



Catalog Number	Trade Size	Unit Pkg.	Standard Pkg.	Catalog Number	Trade Size	Unit Pkg.	Standard Pkg.
MCPE-50	1/2"	10	100	MCPE-100	1"	-	25
MCPE-75	3/4"	5	50	MCPE-125	1 1/4"	-	20

### RIGID 90° SHORT ELBOWS

Connects Rigid/IMC conduit to outlet box

**Features:** Appropriate where close radius is required

**Material:** Zinc

**Certifications:** cULus



Catalog Number	Trade Size	Unit Pkg.	Standard Pkg.
780-DC	1/2"	50	500
781-DC	3/4"	25	250

### RIGID 90° LONG ELBOWS

Telephone elbow for Rigid/IMC conduit

**Features:** Accurately tapped & tapered thread

**Material:** Malleable Iron



Catalog Number	Trade Size	Unit Pkg.	Standard Pkg.
800	1/2"	10	100
801	3/4"	10	100
802	1"	5	50
803	1 1/4"	5	25

### CONDUIT NIPPLES - ZINC

Serves as short raceway between enclosures when used with a locknut

**Features:** Corrosion resistant

**Material:** Zinc

**Certifications:** cULus



Catalog Number	Trade Size	Unit Pkg.	Standard Pkg.	Catalog Number	Trade Size	Unit Pkg.	Standard Pkg.
332	1/2"	100	1,000	337	2"	10	40
333	3/4"	50	500	338	2 1/2"	-	10
334	1"	25	250	339	3"	-	10
335	1 1/4"	25	250	340	3 1/2"	-	10
336	1 1/2"	25	100	341	4"	-	10

### CONDUIT NIPPLES MALLEABLE IRON

Serves as short raceway between enclosures when used with a locknut

**Features:** Corrosion resistant

**Material:** Malleable Iron

**Certifications:** cULus



Catalog Number	Trade Size	Unit Pkg.	Standard Pkg.	Catalog Number	Trade Size	Unit Pkg.	Standard Pkg.
332M	1/2"	100	1,000	338M	2 1/2"	-	10
333M	3/4"	50	500	339M	3"	-	10
334M	1"	25	250	340M	3 1/2"	-	10
335M	1 1/4"	25	250	341M	4"	-	10
336M	1 1/2"	25	100	343M	5"	-	5
337M	2"	10	40	344M	6"	-	5

### OFFSET CONDUIT NIPPLES

Use to offset the axis of a raceway 3/4" between enclosure runs

**Features:** Enable an easier direction change of conduit

**Material:** Zinc

**Certifications:** cULus



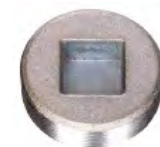
Catalog Number	Trade Size	Unit Pkg.	Standard Pkg.	Catalog Number	Trade Size	Unit Pkg.	Standard Pkg.
830	1/2"	10	100	834	1 1/2"	5	50
831	3/4"	10	100	835	2"	2	20
832	1"	10	100	836	2 1/2"	-	2
833	1 1/4"	5	50	837	3"	-	2

### COUNTERSUNK INSERT PLUGS

For use with end wrench

**Features:** NPT threads

**Material:** Malleable Iron



Catalog Number	Trade Size	Standard Pkg.
1015C	2"	25
1016C	2 1/2"	10
1017C	3"	10
1018C	3 1/2"	5
1019C	4"	5

### FLANGE PLATES

Use with threaded conduit for mounting to flat surfaces

**Features:** Heavy Iron construction

**Material:** Malleable Iron

**Certifications:** cULus



Catalog Number	Trade Size	Unit Pkg.	Standard Pkg.
850	1/2"	20	100
851	3/4"	20	100
852	1"	10	100
853	1 1/4"	-	50
854	1 1/2"	-	50
855	2"	-	50

### MALE ENLARGERS

Converts conduit end sizes, eliminates rework or tear outs

**Features:** Helps to better accommodate design specs

**Material:** Malleable Iron

**Certifications:** cULus



Catalog Number	Trade Size	Unit Pkg.	Standard Pkg.
61ME	1/2"M x 3/4"F	20	100
63ME	3/4"M x 1"F	20	100
66ME	1"M x 1 1/4"F	10	100
70ME	1 1/4"M x 1 1/2"F	-	50

# HAZARDOUS LOCATIONS FITTINGS

FLEXIBLE COUPLINGS

OUTLET BOXES

CONDUIT BODIES

CAPPED ELBOWS

UNIONS

SEALING FITTINGS



FC-18



# EXPLOSION PROOF FLEXIBLE COUPLINGS

**Features:**

- All sizes are manufactured from bronze braided brass tubing with an arc resistant liner, assembled with two female threaded End fittings and two male Nipples – Type ECGJH
- Corrosion resistant and watertight
- Custom lengths available upon request

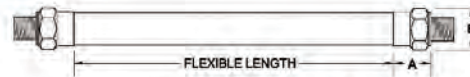
Note: Third party certification not available for lengths exceeding 36" in any size

**Applications:**

- Accomplishing difficult bends
- Movement of connected fixtures
- Vibration of connected equipment (as motors)

UL listed for use in Hazardous Locations:

- 1/2", 3/4"
  - Class I, Groups A, B, C, D
  - Class II, Groups E, F, G
- 1", 1-1/2", 2"
  - Class I, Groups C, D
  - Class II, Groups E, F, G
- 1-1/4"
  - Class I, Group D
  - Class II, Group E, F, G



Note: Flexible Length does not include fittings.

Catalog No.	Size	Flexible Length	Pkg Wt.	Dim. A	Dim. B
FC-14	1/2"	4"	1.0	1.54	1.44
FC-16	1/2"	6"	1.2	1.54	1.44
FC-18	1/2"	8"	1.4	1.54	1.44
FC-110	1/2"	10"	1.6	1.54	1.44
FC-112	1/2"	12"	1.8	1.54	1.44
FC-115	1/2"	15"	2.1	1.54	1.44
FC-118	1/2"	18"	2.4	1.54	1.44
FC-121	1/2"	21"	2.7	1.54	1.44
FC-124	1/2"	24"	3.0	1.54	1.44
FC-127	1/2"	27"	3.3	1.54	1.44
FC-130	1/2"	30"	3.6	1.54	1.44
FC-133	1/2"	33"	3.9	1.54	1.44
FC-136	1/2"	36"	4.2	1.54	1.44
FC-24	3/4"	4"	1.2	1.60	1.87
FC-26	3/4"	6"	1.4	1.60	1.87
FC-28	3/4"	8"	1.7	1.60	1.87
FC-210	3/4"	10"	2.0	1.60	1.87
FC-212	3/4"	12"	2.2	1.50	1.87
FC-215	3/4"	15"	2.6	1.60	1.87
FC-218	3/4"	18"	3.0	1.60	1.87
FC-221	3/4"	21"	3.4	1.60	1.87
FC-224	3/4"	24"	3.8	1.60	1.87
FC-227	3/4"	27"	4.2	1.60	1.87
FC-230	3/4"	30"	4.6	1.60	1.87
FC-233	3/4"	33"	5.0	1.60	1.87
FC-236	3/4"	36"	5.3	1.60	1.87
FC-36	1"	6"	2.7	2.00	2.31
FC-38	1"	8"	3.7	2.00	2.31
FC-310	1"	10"	4.6	2.00	2.31
FC-312	1"	12"	5.5	2.00	2.31
FC-315	1"	15"	6.1	2.00	2.31
FC-318	1"	18"	6.7	2.00	2.31

Catalog No.	Size	Flexible Length	Pkg Wt.	Dim. A	Dim. B
FC-321	1"	21"	7.3	2.00	2.31
FC-324	1"	24"	7.9	2.00	2.31
FC-327	1"	27"	8.5	2.00	2.31
FC-330	1"	30"	9.0	2.00	2.31
FC-333	1"	33"	9.7	2.00	2.31
FC-336	1"	36"	10.3	2.00	2.31
FC-412	1-1/4"	12"	7.2	2.12	2.74
FC-415	1-1/4"	15"	8.1	2.12	2.74
FC-418	1-1/4"	18"	9.0	2.12	2.74
FC-421	1-1/4"	21"	9.9	2.12	2.74
FC-424	1-1/4"	24"	10.8	2.12	2.74
FC-427	1-1/4"	27"	11.7	2.12	2.74
FC-430	1-1/4"	30"	12.6	2.12	2.74
FC-433	1-1/4"	33"	13.5	2.12	2.74
FC-436	1-1/4"	36"	14.4	2.12	2.74
FC-512	1-1/2"	12"	14.7	2.37	3.61
FC-515	1-1/2"	15"	16.8	2.37	3.61
FC-518	1-1/2"	18"	18.9	2.37	3.61
FC-521	1-1/2"	21"	21.0	2.37	3.61
FC-524	1-1/2"	24"	23.0	2.37	3.61
FC-527	1-1/2"	27"	25.0	2.37	3.61
FC-530	1-1/2"	30"	27.0	2.37	3.61
FC-533	1-1/2"	33"	29.0	2.37	3.61
FC-536	1-1/2"	36"	31.0	2.37	3.61
FC-612	2"	12"	15.0	2.41	4.33
FC-615	2"	15"	17.1	2.41	4.33
FC-618	2"	18"	19.2	2.41	4.33
FC-621	2"	21"	21.3	2.41	4.33
FC-624	2"	24"	23.3	2.41	4.33
FC-627	2"	27"	25.4	2.41	4.33
FC-630	2"	30"	27.3	2.41	4.33
FC-633	2"	33"	29.4	2.41	4.33
FC-636	2"	36"	31.3	2.41	4.33



## EXPLOSION PROOF CONDUIT OUTLET BOX - TYPE C

Installed in conduit systems within hazardous areas to protect conductors in threaded rigid conduit

**Features:** Suitable for NEMA 4X applications

**Material:** Aluminum

**Certifications:** UL



Catalog Number	Trade Size	Unit Pkg.	Standard Pkg.
GUAC-50A	1/2"	1	5
GUAC-75A	3/4"	1	5
GUAC-100A	1"	1	5

## EXPLOSION PROOF CONDUIT OUTLET BOX - TYPE LB

Installed in conduit systems within hazardous areas to protect conductors in threaded rigid conduit

**Features:** Suitable for NEMA 4X applications

**Material:** Aluminum

**Certifications:** UL



Catalog Number	Trade Size	Unit Pkg.	Standard Pkg.
GUAB-50A	1/2"	1	5
GUAB-75A	3/4"	1	5
GUAB-100A	1"	1	5

## EXPLOSION PROOF CONDUIT OUTLET BOX - TYPE L

Installed in conduit systems within hazardous areas to protect conductors in threaded rigid conduit

**Features:** Suitable for NEMA 4X applications

**Material:** Aluminum

**Certifications:** UL



Catalog Number	Trade Size	Unit Pkg.	Standard Pkg.
GUAL-50A	1/2"	1	5
GUAL-75A	3/4"	1	5
GUAL-100A	1"	1	5

## EXPLOSION PROOF CONDUIT OUTLET BOX - TYPE T

Installed in conduit systems within hazardous areas to protect conductors in threaded rigid conduit

**Features:** Suitable for NEMA 4X applications

**Material:** Aluminum

**Certifications:** UL



Catalog Number	Trade Size	Unit Pkg.	Standard Pkg.
GUAT-50A	1/2"	1	5
GUAT-75A	3/4"	1	5
GUAT-100A	1"	1	5

## EXPLOSION PROOF CONDUIT BODIES - TYPE LB

Connects conduit lengths and changes direction of conduit while meeting classified area requirements

**Features:** Tapered hub threads for tight, rigid joints and ground continuity

**Material:** Aluminum

**Certifications:** UL



Catalog Number	Trade Size	Unit Pkg.	Standard Pkg.
XLB-50	1/2"	5	25
XLB-75	3/4"	5	25

## EXPLOSION PROOF CONDUIT BODIES - TYPE T

Connects conduit lengths and changes direction of conduit while meeting classified area requirements

**Features:** Tapered hub threads for tight, rigid joints and ground continuity

**Material:** Aluminum

**Certifications:** UL



Catalog Number	Trade Size	Unit Pkg.	Standard Pkg.
XT-50	1/2"	5	25
XT-75	3/4"	5	25

## EXPLOSION PROOF CAPPED ELLS

Makes 90° bends in conduit systems where space is limited and can serve as pulling fitting

**Features:** Screw-on cover for ease of installation and removal

**Material:** Ductile Iron

**Certifications:** UL



Catalog Number	Trade Size	Unit Pkg.	Standard Pkg.
PLBY-50	1/2"	2	10
PLBY-75	3/4"	2	10
PLBY-100	1"	2	10
PLBY-125	1 1/4"	2	10

## EXPLOSION PROOF UNIONS

Use for joining conduit and connecting conduit to enclosures in classified areas

**Features:** Accurately tapped threads for rigid joints and ground continuity

**Material:** Steel

**Certifications:** UL



Catalog Number	Trade Size	Unit Pkg.	Standard Pkg.
UNF-50	1/2"	10	50
UNF-75	3/4"	5	25
UNF-100	1"	5	25

## EXPLOSION PROOF - TYPE EYA SEALING FITTINGS - ALUMINUM

Prevents passage of gases, vapors, or flames from one portion of conduit system to another

**Features:** Dust ignition-proof, Raintight and restricts any explosion to the sealed off enclosure

**Material:** Aluminum

**Certifications:** UL



Catalog Number	Trade Size	Unit Pkg.	Standard Pkg.
EYA-50A	1/2"	10	50
EYA-75A	3/4"	5	25
EYA-100A	1"	5	25

## PACKING FIBER NON-ASBESTOS

Forms a dam between the bushing of the sealing fitting and the end of the conduit around the conductors entering the hub

**Features:** Packs easily to form around each conductor

**Material:** Ceramic Fiber



Catalog Number	Trade Size	Unit Pkg.	Standard Pkg.
EYPF-4	4 oz. ctn.	1	10
EYPF-8	8 oz. ctn.	1	10
EYPF-16	1 lb. ctn.	-	1

## EXPLOSION PROOF - TYPE EYA SEALING FITTINGS MALLEABLE IRON

Prevents passage of gases, vapors, or flames from one portion of conduit system to another

**Features:** Dust ignition-proof, Raintight and restricts any explosion to the sealed off enclosure

**Material:** Malleable Iron

**Certifications:** UL



Catalog Number	Trade Size	Unit Pkg.	Standard Pkg.
EYA-50	1/2"	10	50
EYA-75	3/4"	5	25
EYA-100	1"	5	25

## SEALING COMPOUND EXPLOSION PROOF FITTINGS

Forms a seal around electrical conductors and the inside of the sealing fitting to restrict the passage of gases and vapors

**Features:** Water soluble that can be easily mixed and poured

**Material:** Hydraulic Cement



Catalog Number	Trade Size	Unit Pkg.	Standard Pkg.
EYSC-8	8 oz. tub	1	12
EYSC-16	16 oz. tub	1	12
EYSC-80	5 lb. tub	1	6
EYSC-160	10 lb. tub	1	4

## EXPLOSION PROOF - TYPE EYS SEALING FITTINGS MALLEABLE IRON

Prevents passage of gases, vapors, or flames from one portion of conduit system to another

**Features:** Dust ignition-proof, Raintight and restricts any explosion to the sealed off enclosure

**Material:** Malleable Iron

**Certifications:** UL



Catalog Number	Trade Size	Unit Pkg.	Standard Pkg.
EYS-1	1/2"	10	50
EYS-2	3/4"	5	25
EYS-3	1"	5	25

# LIQUIDTIGHT FITTINGS

CONNECTORS  
LIQUIDTIGHT CONDUIT  
COMBINATION COUPLINGS



RT50-S

VISIT  
[WWW.PECO-ELECTRIC.COM](http://WWW.PECO-ELECTRIC.COM)  
FOR MORE



## STRAIGHT LIQUIDTIGHT CONNECTORS - STEEL

To secure and seal Liquidtight conduit to a box or enclosure

**Features:** Insulated throat protects conductors from abrasion damage

**Material:** Steel

**Certifications:** cULus



Catalog Number	Trade Size	Unit Pkg.	Standard Pkg.
RT-38S	3/8"	25	250
RT-50S	1/2"	25	250
RT-75S	3/4"	10	100
RT-100S	1"	5	50
RT-125S	1 1/4"	5	50
RT-150S	1 1/2"	10	50
RT-200S	2"	5	25

## STRAIGHT LIQUIDTIGHT CONNECTORS MALLEABLE IRON

To secure and seal Liquidtight conduit to a box or enclosure

**Features:** Insulated throat protects conductors from abrasion damage

**Material:** Malleable Iron

**Certifications:** cULus



Catalog Number	Trade Size	Unit Pkg.	Standard Pkg.	Catalog Number	Trade Size	Unit Pkg.	Standard Pkg.
RT-38MA	3/8"	25	250	RT-200MA	2"	5	25
RT-50MA	1/2"	25	250	RT-250MA	2 1/2"	1	10
RT-75MA	3/4"	10	100	RT-300MA	3"	1	10
RT-100MA	1"	5	50	RT-350MA	3 1/2"	1	10
RT-125MA	1 1/4"	5	50	RT-400MA	4"	1	5
RT-150MA	1 1/2"	10	50				

## 90° LIQUIDTIGHT CONNECTORS MALLEABLE IRON

To secure and seal Liquidtight conduit to a box or enclosure

**Features:** Insulated throat protects conductors from abrasion damage

**Material:** Malleable Iron

**Certifications:** cULus



Catalog Number	Trade Size	Unit Pkg.	Standard Pkg.	Catalog Number	Trade Size	Unit Pkg.	Standard Pkg.
RT-90-38MA	3/8"	10	100	RT-90-200MA	2"	-	5
RT-90-50MA	1/2"	10	100	RT-90-250MA	2 1/2"	-	1
RT-90-75MA	3/4"	10	100	RT-90-300MA	3"	-	1
RT-90-100MA	1"	5	50	RT-90-350MA	3 1/2"	-	1
RT-90-125MA	1 1/4"	-	10	RT-90-400MA	4"	-	1
RT-90-150MA	1 1/2"	-	10				

## 45° LIQUIDTIGHT CONNECTORS MALLEABLE IRON

To secure and seal Liquidtight conduit to a box or enclosure

**Features:** Insulated throat protects conductors from abrasion damage

**Material:** Malleable Iron

**Certifications:** cULus



Catalog Number	Trade Size	Unit Pkg.	Standard Pkg.	Catalog Number	Trade Size	Unit Pkg.	Standard Pkg.
RT-45-38MA	3/8"	10	100	RT-45-200MA	2"	-	5
RT-45-50MA	1/2"	10	100	RT-45-250MA	2 1/2"	-	1
RT-45-75MA	3/4"	10	100	RT-45-300MA	3"	-	1
RT-45-100MA	1"	5	50	RT-45-350MA	3 1/2"	-	1
RT-45-125MA	1 1/4"	-	10	RT-45-400MA	4"	-	1
RT-45-150MA	1 1/2"	-	10				

## STRAIGHT LIQUIDTIGHT CONNECTORS - ZINC

To secure and seal Liquidtight conduit to a box or enclosure

**Features:** Liquidtight, Raintight, Oiltight

**Material:** Zinc

**Certifications:** cULus



Catalog Number	Trade Size	Unit Pkg.	Standard Pkg.	Catalog Number	Trade Size	Unit Pkg.	Standard Pkg.
RT-38	3/8"	25	250	RT-200	2"	5	25
RT-50	1/2"	25	250	RT-250	2 1/2"	-	1
RT-75	3/4"	10	100	RT-300	3"	-	1
RT-100	1"	5	50	RT-350	3 1/2"	-	1
RT-125	1 1/4"	5	50	RT-400	4"	-	1
RT-150	1 1/2"	10	50				

## 90° LIQUIDTIGHT CONNECTORS ZINC

To secure and seal Liquidtight conduit to a box or enclosure

**Features:** Liquidtight, Raintight, Oiltight

**Material:** Zinc

**Certifications:** cULus



Catalog Number	Trade Size	Unit Pkg.	Standard Pkg.	Catalog Number	Trade Size	Unit Pkg.	Standard Pkg.
RT-90-38	3/8"	10	100	RT-90-200	2"	-	5
RT-90-50	1/2"	10	100	RT-90-250	2 1/2"	-	1
RT-90-75	3/4"	10	100	RT-90-300	3"	-	1
RT-90-100	1"	5	50	RT-90-350	3 1/2"	-	1
RT-90-125	1 1/4"	-	10	RT-90-400	4"	-	1
RT-90-150	1 1/2"	-	10				

# LIQUIDTIGHT FITTINGS

## STRAIGHT LIQUIDTIGHT CONNECTORS NON-METALLIC

To secure and seal Liquidtight conduit to a box or enclosure

**Features:** For use in wet or dry locations  
**Material:** Nylon  
**Certifications:** cULus



Catalog Number	Trade Size	Unit Pkg.	Standard Pkg.
NMLT-38	3/8"	25	100
NMLT-50	1/2"	25	100
NMLT-75	3/4"	10	100
NMLT-100	1"	10	50
NMLT-125	1 1/4"	5	25
NMLT-150	1 1/2"	2	10
NMLT-200	2"	2	10

## 90° LIQUIDTIGHT CONNECTORS NON-METALLIC

To secure and seal Liquidtight conduit to a box or enclosure

**Features:** For use in wet or dry locations  
**Material:** Nylon  
**Certifications:** cULus



Catalog Number	Trade Size	Unit Pkg.	Standard Pkg.
NMLT-90-38	3/8"	25	100
NMLT-90-50	1/2"	25	100
NMLT-90-75	3/4"	10	100
NMLT-90-100	1"	10	50
NMLT-90-125	1 1/4"	5	25
NMLT-90-150	1 1/2"	2	10
NMLT-90-200	2"	2	10

## LIQUIDTIGHT CONDUIT NON-METALLIC

For use in wet locations, suitable for commercial and industrial use

**Features:** Sunlight resistant, approved for direct burial  
**Material:** Nylon  
**Certifications:** cULus



Catalog Number	Trade Size	Length	Unit Pkg.	Standard Pkg.
NMLC-50	1/2"	100'	-	1
NMLC-50R	1/2"	1000'	-	1
NMLC-75	3/4"	100'	-	1
NMLC-75R	3/4"	800'	-	1
NMLC-100	1"	100'	-	1
NMLC-100R	1"	500'	-	1
NMLC-125	1 1/4"	50'	-	1
NMLC-150	1 1/2"	50'	-	1
NMLC-200	2"	50'	-	1

## COMBINATION COUPLINGS LIQUIDTIGHT TO EMT CONDUIT

Connects Liquidtight conduit to EMT conduit

**Features:** Liquidtight, Raintight, Oiltight  
**Material:** Steel  
**Certifications:** cULus



Catalog Number	Trade Size	Unit Pkg.	Standard Pkg.
RT-260	1/2"	25	250
RT-261	3/4"	20	200

## COMBINATION COUPLINGS RIGID TO LIQUIDTIGHT

Connects Liquidtight conduit to Rigid/IMC conduit

**Features:** Liquidtight, Raintight, Oiltight  
**Material:** Steel  
**Certifications:** cULus



Catalog Number	Trade Size	Unit Pkg.	Standard Pkg.
RTCC-50	1/2"	20	200
RTCC-75	3/4"	10	100

# CABLE CONNECTORS

SQUEEZE CONNECTORS  
CLAMP TYPE CONNECTOR  
NON-WATERTIGHT CONNECTORS  
BX CONNECTORS  
SADDLE TYPE CONNECTORS  
DUPLEX CONNECTORS  
COMBINATION COUPLINGS  
TAKE-ALL CONNECTORS  
STRAPS  
SCREW-IN CONNECTORS  
SNAP CONNECTORS  
COMBINATION CONNECTOR  
SET SCREW CONNECTOR



220



## STRAIGHT SQUEEZE TYPE CONNECTORS - ZINC

Use to connect flexible metallic conduit and steel AC cable to a steel outlet box

**Features:** Rugged metallic construction ensures mechanical protection

**Material:** Zinc

**Certifications:** cULus



Catalog Number	Trade Size	Unit Pkg.	Standard Pkg.
220	3/8"	50	500
222	1/2"	25	250
223	3/4"	25	250
225	1"	10	100
226	1 1/4"	10	100
227	1 1/2"	5	50
228	2"	10	40

## 90° SQUEEZE TYPE CONNECTORS - ZINC

Use to connect flexible metallic conduit and steel AC cable to a steel outlet box

**Features:** Quality set screw design tightens fast and easy

**Material:** Zinc

**Certifications:** cULus



Catalog Number	Trade Size	Unit Pkg.	Standard Pkg.
40	3/8"	50	500
41	1/2"	25	250
42	3/4"	10	100
43	1"	5	50
44	1 1/4"	10	40
45	1 1/2"	-	10
46	2"	-	5

## STRAIGHT SQUEEZE TYPE CONNECTORS MALLEABLE IRON

Use to connect flexible metallic conduit and steel AC cable to a steel outlet box

**Features:** Rugged metallic construction ensures mechanical protection

**Material:** Malleable Iron

**Certifications:** cULus



Catalog Number	Trade Size	Unit Pkg.	Standard Pkg.	Catalog Number	Trade Size	Unit Pkg.	Standard Pkg.
220M	3/8"	25	250	228M	2"	-	10
222M	1/2"	25	250	229M	2 1/2"	-	5
223M	3/4"	25	250	230M	3"	-	5
225M	1"	10	100	231M	3 1/2"	-	1
226M	1 1/4"	10	100	232M	4"	-	1
227M	1 1/2"	-	10				

## 90° SQUEEZE TYPE CONNECTORS MALLEABLE IRON

Use to connect flexible metallic conduit and steel AC cable to a steel outlet box

**Features:** Rugged metallic construction ensures mechanical protection

**Material:** Malleable Iron

**Certifications:** cULus



Catalog Number	Trade Size	Unit Pkg.	Standard Pkg.	Catalog Number	Trade Size	Unit Pkg.	Standard Pkg.
40M	3/8"	50	500	46M	2"	-	5
41M	1/2"	25	250	47M	2 1/2"	-	2
42M	3/4"	10	100	48M	3"	-	1
43M	1"	5	50	49M	3 1/2"	-	1
44M	1 1/4"	-	10	49M-A	4"	-	1
45M	1 1/2"	-	10				

## NM CLAMP TYPE CABLE CONNECTOR

For connecting non-metallic cable to box or enclosure

**Features:** Assembled with die-cast locknut and tri-combo screws

**Material:** Zinc

**Certifications:** cULus

\*For NMB and UF

\*\* For corrugated, continuous corrugated, and aluminum smooth extended

MC cable: Diameter: .50, Range .345-.525



Catalog Number	Trade Size	Length	Unit Pkg.	Standard Pkg.
*135	3/8"	.18-.64	100	1,000
**135-C	3/8"	.18-.63	100	1,000

## NON-WATERTIGHT CONNECTORS - ROUND CABLE

Use to connect non-metallic sheathed cable to a steel box or enclosure

**Features:** Round type for NMB, UF, SEU, and SER

**Material:** Zinc

**Certifications:** cULus



Catalog Number	Trade Size	Unit Pkg.	Standard Pkg.
105R	3/4"	50	500
106R	1"	25	250
107R	1 1/4"	10	100
108R	1 1/2"	10	100
109R	2"	5	50

## NON-WATERTIGHT CONNECTORS - OVAL CABLE

Use to connect non-metallic sheathed cable to a steel box or enclosure

**Features:** Oval type for NMB, UF, SEU, and SER

**Material:** Zinc

**Certifications:** cULus



Catalog Number	Trade Size	Unit Pkg.	Standard Pkg.
108	1 1/2"	10	100
109	2"	10	50

## SET SCREW BX CONNECTOR

Connects BX/steel flex to box or enclosure

**Features:** End stopped  
**Material:** Zinc  
**Certifications:** cULus



Catalog Number	Trade Size	Length	Unit Pkg.	Standard Pkg.
130	3/8"	14/2 to 10/3	100	1,000

## SADDLE TYPE CONNECTOR

Use to connect NM, armored or metal clad cable to box or enclosure

**Features:** Dry location necessary when used with MC cable  
**Material:** Zinc  
**Certifications:** cULus



Catalog Number	Trade Size	Length	Unit Pkg.	Standard Pkg.
132	3/8"	14/2 to 10/3	50	500

## DUPLEX CONNECTOR CLAMP TYPE

Use to connect two pieces of FMC, AC, MC, or NM sheathed cable to box or enclosure using one knockout

**Features:** Dry location only  
**Material:** Zinc  
**Certifications:** cULus



Catalog Number	Trade Size	Unit Pkg.	Standard Pkg.
6	3/8"	25	250

## DUPLEX BX CONNECTOR SINGLE SCREW

Use to connect flexible metallic conduit or armored cable to box or enclosure

**Features:** Dry location only  
**Material:** Zinc  
**Certifications:** cULus



Catalog Number	Trade Size	Unit Pkg.	Standard Pkg.
8	3/8"	25	250

## COMBINATION COUPLINGS -EMT TO FLEXIBLE CONDUIT

Connects EMT conduit to flexible metal conduit

**Features:** Set-screw to clamp type  
**Material:** Zinc  
**Certifications:** cULus  
 \* Product Approved for EMT to NM cable



685



686 & 687

Catalog Number	Trade Size	Unit Pkg.	Standard Pkg.
*685	1/2" EMT to 3/8" Flex	10	100
686	1/2" EMT to 1/2" Flex	10	100
687	3/4" EMT to 3/4" Flex	10	100

## TAKE-ALL CONNECTORS

Use to connect MC, AC, NM, and round SE into a box or enclosure

**Features:** Indoor dry location use only  
**Material:** Zinc  
**Certifications:** cULus



Catalog Number	Trade Size	Unit Pkg.	Standard Pkg.
TAC-50	1/2"	25	250
TAC-75	3/4"	20	200
TAC-100	1"	10	100
TAC-125	1 1/4"	10	100
TAC-150	1 1/2"	10	100
TAC-200	2"	5	50

## SET SCREW TYPE CONNECTOR FOR FLEXIBLE CONDUIT

Connects flexible metal conduit to box or enclosure

**Features:** For use with steel only  
**Material:** Zinc  
**Certifications:** cULus



Catalog Number	Trade Size	Unit Pkg.	Standard Pkg.
938	1/2"	25	250

## BX STRAP - ONE HOLE

To securely affix cables, tubing, and pipe

**Features:** Inverted rib provides extra strength  
**Material:** Steel  
**Certifications:** cULus



Catalog Number	Trade Size	Length	Unit Pkg.	Standard Pkg.
BX-50	3/8"	14/2 to 12/3	100	1,000
GWS-8	1/4" Mini	14/2 to 12/3	100	1,000

## SNAP CONNECTORS

Use to join sheathed cable into box or enclosure

**Features:** Single-unit or duplex construction with captive clamp  
**Material:** Steel  
**Certifications:** cULus



Catalog Number	Trade Size	Length	Unit Pkg.	Standard Pkg.
MC-50	3/8" AC/MC SINGLE	10	100	50 / 500
MC-50D	3/8" AC/MC DOUBLE	10	100	25 / 250

# STRAIN RELIEF CORD GRIPS

STRAIGHT  
CONNECTORS



CG-50-A250

VISIT  
[WWW.PECO-ELECTRIC.COM](http://WWW.PECO-ELECTRIC.COM)  
FOR MORE



**STRAIGHT STRAIN RELIEF CORD CONNECTORS**

Secures & seals cords or cables entering enclosures or raceways

**Features:** Provides excellent strain relief and prevents cable pullout

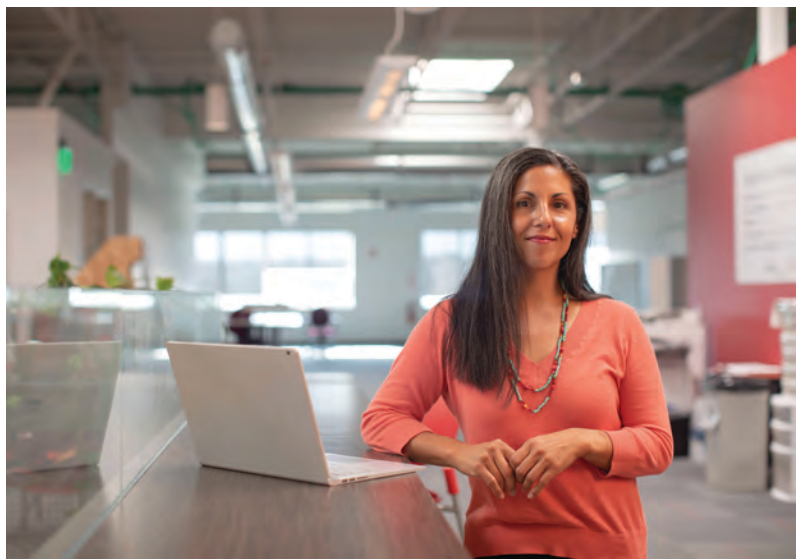
**Material:** Steel

**Certifications:** cULus



Catalog Number	Trade Size	Unit Pkg.	Standard Pkg.	Catalog Number	Trade Size	Unit Pkg.	Standard Pkg.
CG-50-A250	1/2"	25	100	CG-100-B750	1"	10	100
CG-50-A350	1/2"	25	100	CG-100-B850	1"	10	100
CG-50-A450	1/2"	25	100	CG-100-C950	1"	10	100
CG-50-A560	1/2"	25	100	CG-100-C1050	1"	10	100
CG-50-A650	1/2"	25	100	CG-125-C850	1 1/4"	5	50
CG-75-A250	3/4"	25	100	CG-125-C950	1 1/4"	5	50
CG-75-A350	3/4"	25	100	CG-125-D1050	1 1/4"	5	50
CG-75-A450	3/4"	25	100	CG-125-D1150	1 1/4"	5	50
CG-75-A560	3/4"	25	100	CG-125-D1250	1 1/4"	5	50
CG-75-A650	3/4"	25	100	CG-125-D1375	1 1/4"	5	50
CG-75-B750	3/4"	25	100	CG-150-D1050	1 1/2"	5	25
CG-75-B850	3/4"	25	100	CG-150-D1150	1 1/2"	5	25
CG-100-B560	1"	10	100	CG-150-D1250	1 1/2"	5	25
CG-100-B650	1"	10	100	CG-150-D1375	1 1/2"	5	25

**DISCOVER THE PECO DIFFERENCE**



**EXCEPTIONAL CUSTOMER SERVICE**

## CORD SELECTION TABLE

Catalog Number	Trade Size	Cable Range		Color	For Types S, SO, ST & STO	For Types SJ, STO, SJT SJTO, SVO and Bus Drop
		Min.	Max.			
CG-50-A250	1/2"	.150	.250	RED		SVO: 18-2,3
CG-50-A350	1/2"	.250	.350	WHITE		SJT: 18-2,3 SJO: 18-2,3,4 16-2,3
CG-50-A450	1/2"	.350	.450	BLUE	18-2,3,4 16-2,3,4	SJO: 16-4, 14-2,3,4 12-2 BUS DROP: 14-3
CG-50-A560	1/2"	.450	.560	GREEN	18-5,6,7 16-4,5,6 14-2,3	SJO: 12-3 BUS DROP: 12-3 10-3
CG-50-A650	1/2"	.550	.650	BROWN	18-8,10 16-7,8 14-4 12-2,3 10-2	
CG-75-A250	3/4"	.150	.250	RED		SVO: 18-2,3
CG-75-A350	3/4"	.250	.350	WHITE		SJT: 18-2,3 SJO: 18-2,3,4 16-2,3
CG-75-A450	3/4"	.350	.450	BLUE	18-2,3,4 16-2,3,4	SJO: 16-4, 14-2,3,4 12-2 BUS DROP: 14-3
CG-75-A560	3/4"	.450	.560	GREEN	18-5,6,7 16-4,5,6 14-2,3	SJO: 12-3 BUS DROP: 12-3 10-3
CG-75-A650	3/4"	.550	.650	BROWN	18-8,10 16-7,8 14-4 12-2,3 10-2	
CG-75-B750	3/4"	.650	.750	YELLOW	18-12,14 16-10,12 14-5,6,7 12-4,5 10-3,4 8-2	BUS DROP: 8-3
CG-75-B850	3/4"	.750	.850	PURPLE	18-16,18,20 16-14,16,18 14-8 12-6,7,8 10-5 8-3,4 6-2	BUS DROP: 6-3
CG-100-B560	1"	.450	.560	GREEN	18-5,6,7 16-4,5,6 14-2,3	SJO: 12-3 BUS DROP: 12-3 10-3
CG-100-B650	1"	.550	.650	BROWN	18-8,10 16-7,8 14-4 12-2,3 10-2	
CG-100-B750	1"	.650	.750	YELLOW	18-12,14 16-10,12 14-5,6,7 12-4,5 10-3,4 8-2	BUS DROP: 8-3
CG-100-B850	1"	.750	.850	PURPLE	18-16,18,20 16-14,16,18 14-8 12-6,7,8 10-5 8-3,4 6-2	BUS DROP: 6-3
CG-100-C950	1"	.850	.950	GRAY	18-22,24,26 16-20,22,24 14-10,12 10-6,7,8 6-3,4	BUS DROP: 4-3
CG-100-C1050	1"	.950	1.050	BLACK	18-30 16-26 14-14,16 12-10 4-3	
CG-125-C850	1 1/4"	.750	.850	PURPLE	18-16,18,20 16-14,16,18 14-8 12-6,7,8 10-5 8-3,4 6-2	BUS DROP: 6-3
CG-125-C950	1 1/4"	.850	.950	GRAY	18-22,24,26 16-20,22,24 14-10,12 10-6,7,8 6-3,4	BUS DROP: 4-3
CG-125-D1050	1 1/4"	.950	1.050	BLACK	18-30 16-26 14-14,16 12-10 4-3	
CG-125-D1150	1 1/4"	1.050	1.150	ORANGE	18-36,40 16-30,36 14-18,20 12-12,14 10-10 4-4	BUS DROP: 2-3
CG-125-D1250	1 1/4"	1.150	1.250	RED	16-40 14-22 12-16,18 10-12,14 2-3	
CG-125-D1375	1 1/4"	1.250	1.375	WHITE	14-24,26 12-20 10-16 2-4	
CG-150-D1050	1 1/2"	.950	1.050	BLACK	18-30 16-26 14-14,16 12-10 4-3	
CG-150-D1150	1 1/2"	1.050	1.150	ORANGE	18-36,40 16-30,36 14-18,20 12-12,14 10-10 4-4	BUS DROP: 2-3
CG-150-D1250	1 1/2"	1.150	1.250	RED	16-40 14-22 12-16,18 10-12,14 2-3	
CG-150-D1375	1 1/2"	1.250	1.375	WHITE	14-24,26 12-20 10-16 2-4	

# PVC FITTINGS

ELBOWS  
EXPANSION JOINTS  
ENTRANCE HEADS  
CONDUIT BODIES  
ADAPTERS  
COUPLINGS  
MOLDED REDUCERS  
MOLDED END BELLS  
END CAPS  
CONDUIT BOXES  
JUNCTION BOXES  
DUPLEX BOXES & COVERS  
TWO HOLE PIPE STRAPS  
PLOY PLUGS  
CONDUIT CEMENT & PRIMER



V90-S-50



## PVC 90° STANDARD RADIUS ELBOWS

Use to change the direction of a conduit run by 90° degrees

**Features:** Indoor/outdoor use, suitable for aboveground or buried  
**Material:** Schedule 40 PVC  
**Certifications:** UL



Catalog Number	Trade Size	Standard Pkg.	Catalog Number	Trade Size	Standard Pkg.
V90-S-50	1/2"	40	V90-S-250	2 1/2"	1
V90-S-75	3/4"	40	V90-S-300	3"	1
V90-S-100	1"	50	V90-S-350	3 1/2"	1
V90-S-125	1 1/4"	25	V90-S-400	4"	1
V90-S-150	1 1/2"	20	V90-S-500	5"	1
V90-S-200	2"	15	V90-S-600	6"	1

## PVC 45° STANDARD RADIUS ELBOWS

Use to change the direction of a conduit run by 45° degrees

**Features:** Indoor/outdoor use, suitable for aboveground or buried  
**Material:** Schedule 40 PVC  
**Certifications:** UL



Catalog Number	Trade Size	Standard Pkg.	Catalog Number	Trade Size	Standard Pkg.
V45-S-50	1/2"	50	V45-S-250	2 1/2"	1
V45-S-75	3/4"	50	V45-S-300	3"	1
V45-S-100	1"	50	V45-S-350	3 1/2"	1
V45-S-125	1 1/4"	35	V45-S-400	4"	1
V45-S-150	1 1/2"	20	V45-S-500	5"	1
V45-S-200	2"	15	V45-S-600	6"	1

## PVC EXPANSION JOINTS

Allows for expansion and contraction in PVC conduit runs

**Features:** Watertight Seal  
**Material:** PVC  
**Certifications:** UL



Catalog Number	Trade Size	Standard Pkg.	Catalog Number	Trade Size	Standard Pkg.
VEJ-50	1/2"	25	VEJ-250	2 1/2"	12
VEJ-75	3/4"	10	VEJ-300	3"	12
VEJ-100	1"	10	VEJ-350	3 1/2"	9
VEJ-125	1 1/4"	5	VEJ-400	4"	6
VEJ-150	1 1/2"	5			
VEJ-200	2"	25			

## PVC MAST ENTRANCE HEADS

Install on a vertical conduit to receive open wires from an electrical service line

**Features:** Weather resistant  
**Material:** PVC  
**Certifications:** UL



Catalog Number	Trade Size	Standard Pkg.
VMH-125	1 1/4"	20
VMH-150	1 1/2"	20
VMH-200	2"	5
VMH-250	2 1/2"	5
VMH-300	3"	5
VMH-350	3 1/2"	5
VMH-400	4"	1

## PVC SERVICE CABLE CAPS

Use as a connecting point in an overhead service entrance for SEU cable

**Features:** Snap-on cover  
**Material:** PVC

Catalog Number	Trade Size	Standard Pkg.
4P	3 No. 8-6-4-2	50
4XL	3 No. 3/0-4/0	10



## PVC TYPE C CONDUIT BODIES

Use as a connector in straight line installations that allow access for wire pulling

**Features:** Rectangular shaped conduit body with a removable cover  
**Material:** PVC  
**Certifications:** UL



Catalog Number	Trade Size	Standard Pkg.	Catalog Number	Trade Size	Standard Pkg.
VC-50	1/2"	25	VC-200	2"	5
VC-75	3/4"	15	VC-250	2 1/2"	5
VC-100	1"	10	VC-300	3"	5
VC-125	1 1/4"	10	VC-350	3 1/2"	4
VC-150	1 1/2"	10	VC-400	4"	4

## PVC TYPE LB CONDUIT BODIES

Use for a change of direction of the conduit run with the back hub usually exiting through a wall

**Features:** Rectangular shaped conduit body with a removable cover  
**Material:** PVC  
**Certifications:** UL



Catalog Number	Trade Size	Standard Pkg.	Catalog Number	Trade Size	Standard Pkg.
VLB-50	1/2"	25	VLB-200	2"	5
VLB-75	3/4"	15	VLB-250	2 1/2"	5
VLB-100	1"	10	VLB-300	3"	5
VLB-125	1 1/4"	10	VLB-350	3 1/2"	4
VLB-150	1 1/2"	10	VLB-400	4"	4

### PVC TYPE LL CONDUIT BODIES

Use for a 90° change of direction of the conduit run



**Features:** Rectangular shaped conduit body with a removable cover

**Material:** PVC

**Certifications:** UL



Catalog Number	Trade Size	Standard Pkg.	Catalog Number	Trade Size	Standard Pkg.
VLL-50	1/2"	25	VLL-200	2"	5
VLL-75	3/4"	15	VLL-250	2 1/2"	5
VLL-100	1"	10	VLL-300	3"	5
VLL-125	1 1/4"	10	VLL-350	3 1/2"	4
VLL-150	1 1/2"	10	VLL-400	4"	4

### PVC TYPE LR CONDUIT BODIES

Use for a 90° change of direction of the conduit run



**Features:** Rectangular shaped conduit body with a removable cover

**Material:** PVC

**Certifications:** UL



Catalog Number	Trade Size	Standard Pkg.	Catalog Number	Trade Size	Standard Pkg.
VLR-50	1/2"	25	VLR-200	2"	5
VLR-75	3/4"	15	VLR-250	2 1/2"	5
VLR-100	1"	10	VLR-300	3"	5
VLR-125	1 1/4"	10	VLR-350	3 1/2"	4
VLR-150	1 1/2"	10	VLR-400	4"	4

### PVC TYPE T CONDUIT BODIES

Allows 3-way inline access in conduit systems



**Features:** Rectangular shaped conduit body with a removable cover

**Material:** PVC

**Certifications:** UL



Catalog Number	Trade Size	Standard Pkg.	Catalog Number	Trade Size	Standard Pkg.
VT-50	1/2"	25	VT-200	2"	5
VT-75	3/4"	15	VT-250	2 1/2"	2
VT-100	1"	10	VT-300	3"	2
VT-125	1 1/4"	10	VT-350	3 1/2"	1
VT-150	1 1/2"	10	VT-400	4"	1

### PVC TERMINAL MALE ADAPTERS

Connects PVC conduit to a threaded PVC or steel conduit bell or terminate raceway to a box or enclosure



**Features:** Fitting consists of one solvent female end and one threaded male end

**Material:** PVC

**Certifications:** cULus



Catalog Number	Trade Size	Standard Pkg.	Catalog Number	Trade Size	Standard Pkg.
VTA-50	1/2"	200	VTA-250	2 1/2"	20
VTA-75	3/4"	125	VTA-300	3"	40
VTA-100	1"	70	VTA-350	3 1/2"	30
VTA-125	1 1/4"	40	VTA-400	4"	20
VTA-150	1 1/2"	30	VTA-500	5"	10
VTA-200	2"	40	VTA-600	6"	8

### PVC FEMALE ADAPTERS

A connector used to transition threaded metal conduit to PVC conduit



**Features:** Fitting consists of two female ends, one is threaded and the other is solvent weld

**Material:** PVC

**Certifications:** cULus



Catalog Number	Trade Size	Standard Pkg.	Catalog Number	Trade Size	Standard Pkg.
VFA-50	1/2"	200	VFA-250	2 1/2"	20
VFA-75	3/4"	125	VFA-300	3"	40
VFA-100	1"	70	VFA-350	3 1/2"	30
VFA-125	1 1/4"	40	VFA-400	4"	20
VFA-150	1 1/2"	30	VFA-500	5"	10
VFA-200	2"	40	VFA-600	6"	8

### PVC JUNCTION BOX ADAPTERS

For use with hub inside box or enclosure



**Features:** Solvent welded connection for a watertight fit

**Material:** PVC

**Certifications:** UL



Catalog Number	Trade Size	Standard Pkg.	Catalog Number	Trade Size	Standard Pkg.
VBA-50	1/2"	100	VBA-200	2"	25
VBA-75	3/4"	100	VBA-250	2 1/2"	10
VBA-100	1"	100	VBA-300	3"	10
VBA-125	1 1/4"	50	VBA-350	3 1/2"	10
VBA-150	1 1/2"	50	VBA-400	4"	10

# PVC FITTINGS

## PVC COUPLINGS

Connects two lengths of PVC conduit

**Features:** Fitting consists of two female ends and a center stop

**Material:** PVC

**Certifications:** cULus



Catalog Number	Trade Size	Standard Pkg.	Catalog Number	Trade Size	Standard Pkg.
VCPL-50	1/2"	200	VCPL-250	2 1/2"	20
VCPL-75	3/4"	125	VCPL-300	3"	40
VCPL-100	1"	70	VCPL-350	3 1/2"	30
VCPL-125	1 1/4"	40	VCPL-400	4"	20
VCPL-150	1 1/2"	30	VCPL-500	5"	10
VCPL-200	2"	40	VCPL-600	6"	8

## PVC MOLDED REDUCERS

Bushing designed to fit into a bell end or female fitting to reduce knockout diameter

**Features:** All connections are solvent weld

**Material:** PVC

**Certifications:** UL



Catalog Number	Trade Size	Standard Pkg.	Catalog Number	Trade Size	Standard Pkg.
VMR-61	3/4" x 1/2"	100	VMR-81	2 1/2" x 2"	25
VMR-63	1" x 3/4"	100	VMR-88	3" x 2 1/2"	25
VMR-66	1 1/4" x 1"	50	VMR-404	4" x 3"	20
VMR-70	1 1/2" x 1 1/4"	50	VMR-405	4" x 3 1/2"	20
VMR-75	2" x 1 1/2"	25			

## PVC MOLDED END BELLS

Use in concrete vault walls to provide a smooth, safe entrance to conduit outside

**Features:** Protects wiring being pulled through the vault wall

**Material:** PVC

**Certifications:** cULus



Catalog Number	Trade Size	Standard Pkg.	Catalog Number	Trade Size	Standard Pkg.
VEB-50	1/2"	100	VEB-250	2 1/2"	30
VEB-75	3/4"	100	VEB-300	3"	50
VEB-100	1"	50	VEB-350	3 1/2"	50
VEB-125	1 1/4"	50	VEB-400	4"	50
VEB-150	1 1/2"	50	VEB-500	5"	25
VEB-200	2"	40	VEB-600	6"	15

## PVC END CAPS

Caps off pipe openings, allows access for future expansion or service

**Features:** Easy to install slip fit

**Material:** PVC

**Certifications:** cULus



Catalog Number	Trade Size	Standard Pkg.	Catalog Number	Trade Size	Standard Pkg.
VEC-50	1/2"	50	VEC-200	2"	50
VEC-75	3/4"	50	VEC-250	2 1/2"	50
VEC-100	1"	50	VEC-300	3"	50
VEC-125	1 1/4"	40	VEC-350	3 1/2"	25
VEC-150	1 1/2"	30	VEC-400	4"	25

## PVC ELECTRICAL CONDUIT BOXES - TYPE FSE

Intended for conduit termination with one conduit hub and no outlet

**Features:** For indoor and outdoor locations where boxes are exposed and subject to environmental conditions

**Material:** PVC

**Certifications:** UL



Catalog Number	Trade Size	Standard Pkg.
VFSE-50	1/2"	10
VFSE-75	3/4"	10
VFSE-100	1"	10

## PVC ELECTRICAL CONDUIT BOXES - TYPE FSC

Intended for straight line conduit runs with one hub on each of the short walls of the box

**Features:** For indoor and outdoor locations where boxes are exposed and subject to environmental conditions

**Material:** PVC

**Certifications:** UL



Catalog Number	Trade Size	Standard Pkg.
VFSC-50	1/2"	10
VFSC-75	3/4"	10
VFSC-100	1"	10

## PVC ELECTRICAL CONDUIT BOXES - TYPE FSCC

Intended for straight line conduit runs with two conduit hubs on one end and the conduit hub on the opposite side

**Features:** For indoor and outdoor locations where boxes are exposed and subject to environmental conditions

**Material:** PVC

**Certifications:** UL



Catalog Number	Trade Size	Standard Pkg.
VFSCC-50	1/2"	10
VFSCC-75	3/4"	10
VFSCC-100	1"	10

## PVC ELECTRICAL CONDUIT BOXES - TYPE FSS

Intended for conduit termination with two conduit hubs on one end and no outlet

**Features:** For indoor and outdoor locations where boxes are exposed and subject to environmental conditions

**Material:** PVC

**Certifications:** UL



Catalog Number	Trade Size	Standard Pkg.
VFSS-50	1/2"	10
VFSS-75	3/4"	10
VFSS-100	1"	10



**PVC ELECTRICAL CONDUIT BOXES - TYPE FDB**

Designed to allow for a hub opening to be cut into the box depending on application

**Features:** For indoor and outdoor locations where boxes are exposed and subject to environmental conditions

**Material:** PVC  
**Certifications:** UL



Catalog Number	Trade Size	Standard Pkg.
VFD	-	10

**PVC JUNCTION BOXES**

Designed to support electrical devices and fixtures

**Features:** Enclosure allows multiple conduits to be connected and wire splice made within

**Material:** PVC  
**Certifications:** UL



Catalog Number	Trade Size	Standard Pkg.	Catalog Number	Trade Size	Standard Pkg.
VJB-442	4" x 4" x 2"	10	VJB-886	8" x 8" x 6"	4
VJB-444	4" x 4" x 4"	10	VJB-887	8" x 8" x 7"	4
VJB-664	6" x 6" x 4"	10	VJB-12124	12" x 12" x 4"	2
VJB-666	6" x 6" x 6"	5	VJB-12126	12" x 12" x 6"	2
VJB-884	8" x 8" x 4"	5			

**PVC BLANK COVERS**

Covers wiring devices inside box after installation

**Features:** Includes gasket and screws

**Material:** PVC  
**Certifications:** UL



Catalog Number	Trade Size	Standard Pkg.
VBC	-	50

**PVC TWO HOLE PIPE STRAPS**

Conduit support device used to anchor conduit to interior or exterior surfaces

**Features:** Two hole construction enables greater load bearing capacity

**Material:** PVC  
**Certifications:** cULus



Catalog Number	Trade Size	Standard Pkg.	Catalog Number	Trade Size	Standard Pkg.
VTH-50	1/2"	300	VTH-200	2"	200
VTH-75	3/4"	200	VTH-250	2 1/2"	100
VTH-100	1"	200	VTH-300	3"	100
VTH-125	1 1/4"	200	VTH-400	4"	100
VTH-150	1 1/2"	200			

**PVC FLOOR BOX BASE**

Designed to be embedded in concrete floor giving access to power and data lines

**Features:** PVC molded parts and reducer plugs included

**Material:** PVC  
**Certifications:** UL



Catalog Number	Description	Standard Pkg.
VFB	Floor Box w/temporary protective cap	9

**PVC FLOOR BOX DUPLEX RECEPTACLE COVER**

Bronze color PVC cover with duplex cut out

**Features:** Includes corrosion resistant hardware

**Material:** PVC  
**Certifications:** UL



Catalog Number	Description	Standard Pkg.
VFBDRC	Floor Box Cover Bronze color	9

**PVC CONDUIT SOLVENT CEMENT**

For use on duct and conduit PVC pipe

**Features:** Medium body, medium set clear cement



Catalog Number	Size	Standard Pkg.
VCEM-1/2PT	1/2 Pint	24
VCEM-PT	1 Pint	12
VCEM-QT	1 Quart	12

**CLEAR PRIMER FOR PVC CEMENT**

Removes dirt, oils and other contaminants from the surface of PVC pipe

**Features:** Multi-purpose



Catalog Number	Size	Standard Pkg.
VPRIM-PT	1 Pint	12

# WEATHERPROOF PRODUCTS

PAR LAMPHOLDER  
CLOSURE PLUGS  
BOXES  
COVERS  
OUTLET COVERS



PT-11

VISIT  
[WWW.PECO-ELECTRIC.COM](http://WWW.PECO-ELECTRIC.COM)  
FOR MORE

## WEATHERPROOF LAMP HOLDERS

Suitable for wet locations

**Features:** Available in gray or white with powder coat finish

**Material:** Aluminum

**Certifications:** cULus



Catalog Number	Description	Standard Pkg.
PAR-1	Gray	50
PAR-1W	White	50

## CLOSURE PLUGS

To safely seal unused hubs in metallic outlet boxes

**Features:** UL listed for wet locations

**Material:** Zinc

**Certifications:** cULus



Catalog Number	Trade Size	Unit Pkg.	Standard Pkg.
P-1	1/2" Gray	100	1,000
P-1W	1/2" White	100	1,000
P-2	3/4" Gray	50	500
P-2W	3/4" White	50	500
P-3	1" Gray	50	500
P-3W	1" White	50	500

## SINGLE GANG WEATHERPROOF BOXES

For wall or pole mounting of outdoor outlets, switches, or floodlights

**Features:** Boxes include closure plugs, grounding screws, and mounting lug hardware

**Material:** Aluminum

**Certifications:** cULus



Catalog Number	Hub Size	No. Outlets	Color	Unit Pkg.	Standard Pkg.	Catalog Number	Hub Size	No. Outlets	Color	Unit Pkg.	Standard Pkg.
PL-11	1/2"	3	Gray	10	50	PL-14W	3/4"	3	White	10	50
PL-11W	1/2"	3	White	10	50	PL-14-2	3/4"	4	Gray	10	50
PL-11-2	1/2"	4	Gray	10	50	PL-14-2W	3/4"	4	White	10	50
PL-11-2W	1/2"	4	White	10	50	PL-14-22	3/4"	5	Gray	10	50
PL-11-22	1/2"	5	Gray	10	50	PL-14-22W	3/4"	5	White	10	50
PL-11-22W	1/2"	5	White	10	50	PL-15	1"	3	Gray	10	50
PL-14	3/4"	3	Gray	10	50	PL-15-22	1"	5	Gray	10	50

## DOUBLE GANG WEATHERPROOF BOXES

For wall or pole mounting of outdoor outlets, switches, or floodlights

**Features:** Boxes include closure plugs, grounding screws, and mounting lug hardware

**Material:** Aluminum

**Certifications:** cULus



Catalog Number	Hub Size	No. Outlets	Color	Unit Pkg.	Standard Pkg.	Catalog Number	Hub Size	No. Outlets	Color	Unit Pkg.	Standard Pkg.
PT-11	1/2"	3	Gray	10	40	PT-14W	3/4"	3	White	10	40
PT-11W	1/2"	3	White	10	40	PT-14-22	3/4"	4	Gray	10	40
PT-11-22	1/2"	4	Gray	10	40	PT-14-22W	3/4"	4	White	10	40
PT-11-22W	1/2"	4	White	10	40	PT-15	1"	3	Gray	10	40
PT-14	3/4"	5	Gray	10	40	PT-15-22	1"	5	Gray	10	40

## 4" ROUND WEATHERPROOF BOXES

For use with all round outlet box and outlet covers

**Features:** For wall or ceiling mounting

**Material:** Aluminum

**Certifications:** cULus



Catalog Number	Hub Size	No. Outlets	Color	Unit Pkg.	Standard Pkg.
PR11-4	1/2"	5	Gray	10	40
PR11-4W	1/2"	5	White	10	40
PR14-4	3/4"	5	Gray	10	40
PR14-4W	3/4"	5	White	10	40

## BLANK WEATHERPROOF COVERS

For use with single or double gang outdoor boxes

**Features:** Weather seal gasket to block moisture

**Material:** Aluminum

**Certifications:** cULus



Catalog Number	Type	Color	Unit Pkg.	Standard Pkg.
PC-0	Single	Gray	20	100
PC-0W	Single	White	20	100
PC-02	Double	Gray	10	50
PC-02W	Double	White	10	50



## 4" ROUND WEATHERPROOF COVERS

For use with round outdoor device box

**Features:** Weather seal gasket to block moisture  
**Material:** Aluminum  
**Certifications:** cULus



Catalog Number	Hub Size	No. Outlets	Color	Unit Pkg.	Standard Pkg.
PR-1	1/2"	1	Gray	10	50
PR-1W	1/2"	1	White	10	50
PR-2	1/2"	2	Gray	10	50
PR-2W	1/2"	2	White	10	50
PR-3	1/2"	3	Gray	10	50
PR-3W	1/2"	3	White	10	50

## G.F.I. WEATHERPROOF COVERS

For use with single gang outdoor box

**Features:** Aluminum die-cast cover with a spring loaded lid  
**Material:** Aluminum  
**Certifications:** cULus



Catalog Number	Hub Size	Orientation	Color	Unit Pkg.	Standard Pkg.
FG-1DC	Single	Horizontal	Gray	5	50
FG-1DCW	Single	Horizontal	White	5	50

## POWER OUTLET WEATHERPROOF COVERS

For use with single or double gang outdoor box

**Features:** Aluminum die-cast cover with a spring loaded lid  
**Material:** Aluminum  
**Certifications:** cULus



Catalog Number	Size	Orientation	Ampere	Unit Pkg.	Standard Pkg.
PO-50	Single	Vertical	30-50	10	50
TPO-50V	Double	-	20-30-50	10	50

## SINGLE RECEPTACLE WEATHERPROOF COVERS

For use with 1.406 diameter receptacle in a single outlet box

**Features:** Aluminum die-cast cover with a spring loaded lid  
**Material:** Aluminum  
**Certifications:** cULus



Catalog Number	Size	Orientation	Color	Unit Pkg.	Standard Pkg.
PC-71	Single	Vertical	Gray	10	50
PC-71W	Single	Vertical	White	10	50

## SINGLE GANG DUPLEX RECEPTACLE WEATHERPROOF COVERS

Will fit all duplex receptacles in single outlet boxes

**Features:** Aluminum die-cast cover with a spring loaded lid  
**Material:** Aluminum  
**Certifications:** cULus



Catalog Number	Size	Orientation	Color	Unit Pkg.	Standard Pkg.
PC-81	Single	Horizontal	Gray	10	50
PC-81W	Single	Horizontal	White	10	50

## DOUBLE GANG DUPLEX RECEPTACLE WEATHERPROOF COVERS

For use with double gang outdoor device box

**Features:** Aluminum die-cast cover with a spring loaded lid  
**Material:** Aluminum  
**Certifications:** cULus



Catalog Number	Size	Color	Unit Pkg.	Standard Pkg.
PC-271	Double	Gray	10	50
PC-271W	Double	White	10	50

## DOUBLE GANG DUAL DUPLEX WEATHERPROOF COVERS

For use with double gang outdoor device box

**Features:** Aluminum die-cast cover with a spring loaded lid  
**Material:** Aluminum  
**Certifications:** cULus



Catalog Number	Size	Color	Unit Pkg.	Standard Pkg.
PC-261	Double	Gray	10	50
PC-261W	Double	White	10	50

## RECTANGULAR WEATHERPROOF COVERS

Fits FS device boxes and listed for wet locations

**Features:** Available with 1, 2 or 3 hole configurations  
**Material:** Aluminum  
**Certifications:** cULus



Catalog Number	Hub Size	No. Outlets	Color	Unit Pkg.	Standard Pkg.
PC-1	1/2"	1	Gray	10	50
PC-1W	1/2"	1	White	10	50
PC-2	1/2"	2	Gray	10	50
PC-2W	1/2"	2	White	10	50
PC-3	1/2"	3	Gray	10	50
PC-3W	1/2"	3	White	10	50

# SERVICE ENTRANCE

ENTRANCE HEADS

MAST KITS

ENTRANCE ELLS - SLB

WATERTIGHT CONNECTORS

UF CONNECTORS

STRAPS

ROOF FLASHING



705

## CLAMP ON ENTRANCE HEADS

Provides water resistant cap to protect service entrance cables

**Features:** Mounts on top of Rigid/IMC conduit  
**Material:** Aluminum  
**Certifications:** cULus



Catalog Number	Trade Size	Unit Pkg.	Standard Pkg.	Catalog Number	Trade Size	Unit Pkg.	Standard Pkg.
700	1/2"	10	50	705	2"	-	5
701	3/4"	10	50	706	2 1/2"	-	2
702	1"	5	25	707	3"	-	2
703	1 1/4"	5	25	708	3 1/2"	-	1
704	1 1/2"	-	10	709	4"	-	1

## THREADED SERVICE ENTRANCE HEADS

Provides water resistant cap to protect service entrance cables

**Features:** Mounts on top of Rigid/IMC conduit  
**Material:** Aluminum  
**Certifications:** cULus



Catalog Number	Trade Size	Unit Pkg.	Standard Pkg.	Catalog Number	Trade Size	Unit Pkg.	Standard Pkg.
26	1/2"	10	50	32	2 1/2"	-	2
27	3/4"	10	50	33	3"	-	1
28	1"	10	50	34	3 1/2"	-	1
29	1 1/4"	5	25	35	4"	-	1
30	1 1/2"	-	10	36	5"	-	1
31	2"	-	5	37	6"	-	1

## MAST ENTRANCE HEADS

Caps overhead service entrance

**Features:** Eliminates sharp edges to protect wire  
**Material:** Aluminum  
**Certifications:** cULus



Catalog Number	Trade Size	Unit Pkg.	Standard Pkg.
712	2" X 1 1/4"	10	80
713	2" X 1 1/2"	10	80
715	2 1/2" X 1 1/4"	5	80
717	2" X 2"	5	180

## SERVICE CABLE CAPS

Caps overhead services that utilize SEU cable

**Features:** Provides water resistant cap when mounted on conduit  
**Material:** Aluminum  
**Certifications:** cULus



Catalog Number	Cable Size	Standard Pkg.
4L	3 #8 to 3 #1	50
4XL-AL	1/0 - 4/0	10

## ENTRANCE ELLS (SLB)

Enables effortless wire pulling when raceway alters direction

**Features:** Allows access for inspection, pulling and maintenance  
**Material:** Aluminum  
**Certifications:** cULus



Catalog Number	Trade Size	Unit Pkg.	Standard Pkg.	Catalog Number	Trade Size	Unit Pkg.	Standard Pkg.
730	1/2"	10	50	734	1 1/2"	-	10
731	3/4"	10	50	735	2"	-	10
732	1"	5	25	733-XL	1 1/4"	-	10
733	1 1/4"	-	10	735-XL	2"	-	10

## SERVICE ENTRANCE MAST KITS

Provides an assortment of SE mast components for the installation of overhead service drops

**Features:** Kits eliminate the need to purchase and stock additional components



Catalog Number	Kit Contents	Standard Pkg.
MK-200	1 - 2" Clamp-on entrance head 1 - Roof flange & neoprene seal 1 - Pipe mounting wireholder 2 - 2" Two hole pipe straps	1
MK-250	1 - 2 1/2" Clamp-on entrance head 1 - Roof flange & neoprene seal 1 - Pipe mounting wireholder 2 - 2 1/2" Two hole pipe straps	1

## ROOF FLASHING

Watertight protection for service entrance conduit or ventilation pipes

**Features:** Strong galvanized steel with neoprene seal  
**Material:** Steel/Neoprene  
**Certifications:** UL



Catalog Number	Trade Size	Unit Pkg.	Standard Pkg.
RF2	2"	25	250
RF25	2 1/2"	25	250

## ROMEX AND SEU STRAPS

Supports service entrance cable, types SE & SEU to mounting surface

**Features:** Heavy gauge steel for extra strength  
**Material:** Steel  
**Certifications:** cULus



Catalog Number	Cable Size	Unit Pkg.	Standard Pkg.
188A	14-2, 12-2	200	2,000
188B	14-3, 12-3	200	2,000

## UF CONNECTORS

Use to secure SE/SEU cable to a metal enclosure

**Features:** For underground feeder cable  
**Material:** Zinc  
**Certifications:** cULus



Catalog Number	Trade Size	Unit Pkg.	Standard Pkg.
UF-50	1/2"	25	250
UF-75	3/4"	25	250



# INSTALLATION SUPPORTS

CONDUIT HANGERS

BEAM CLAMPS

CEILING BOX SUPPORTS

SWITCH BOX SUPPORTS

ADJUSTABLE PIPE  
WIREHOLDERS

PIPE WIREHOLDERS

PORCELAIN WIREHOLDERS

PORCELAIN SPLIT  
INSULATORS



H50WB

## CONDUIT HANGERS

Secures EMT or Rigid conduit to threaded rod, insulator supports, or mounting surface

**Features:** Assembled with nut and bolt

**Material:** Steel

**Certifications:** cULus



Catalog Number	Rigid	EMT	Unit Pkg.	Standard Pkg.	Catalog Number	Rigid	EMT	Unit Pkg.	Standard Pkg.
H50WB	1/2"	1/2"	100	500	H200WB	2"	2"	-	50
H75WB	3/4"	3/4"	-	100	H250WB	2 1/2"	2 1/2"	-	50
H100WB	1"	1"	-	100	H300WB	3"	3"	-	50
H125AWB	-	1 1/4"	-	100	H350WB	3 1/2"	3 1/2"	-	25
H125WB	1 1/4"	1 1/2"	-	100	H400WB	4"	4"	-	25
H150WB	1 1/2"	-	-	100					

## BEAM CLAMPS MALLEABLE IRON

Supports threaded rod, threaded bridle rings and electrical boxes

**Features:** Body will not distort or slip when tightened

**Material:** Malleable Iron

**Certifications:** cULus



Catalog Number	Trade Size	Tap Size	Standard Pkg.	Catalog Number	Trade Size	Tap Size	Standard Pkg.
902	3/4"	1/4-20	100	904	2"	3/8-16	50
903	3/4"	3/8-16	100	905	2 1/2"	1/2-13	25

## BEAM CLAMPS - STEEL

Supports threaded rod, threaded bridle rings and electrical boxes

**Features:** Single screw, 2 hole assembly

**Material:** Steel

**Certifications:** cULus



Catalog Number	Trade Size	Tap Size	Standard Pkg.
902S	3/4"	1/4-20	100
904S	3/4"	3/8-16	100

## CEILING BOX SUPPORTS

Use for box installations where space and access may be limited

**Features:** Steel bars ensure performance and longevity

**Material:** Steel

**Certifications:** cULus



Catalog Number	Trade Size	Standard Pkg.
CBS	1" to 2"	50

## SWIVEL FIXTURE HANGERS

Permits fixture to swing freely, allowing easy removal

**Features:** Supports weight up to 50 lbs.

**Material:** Steel

**Certifications:** cULus



Catalog Number	Size	Standard Pkg.	Use
SWV-4R	1/2" or 3/4" Round	25	Fits 4" Octagon Box
SWV-4S	1/2" or 3/4" Square	25	Fits 4" Square Box

## ADJUSTABLE PIPE WIREHOLDERS

Protects sheathing and ensures performance

**Features:** Corrosion resistant for secure installation

**Material:** Porcelain/Steel



Catalog Number	Trade Size	Porcelain Opening	Standard Pkg.
AWH-300	1 1/4" - 3"	7/8" - 1"	20

## PORCELAIN WIREHOLDERS

Secures wires before entry into a mast or SE cap

**Features:** Includes lag bolt

**Material:** Porcelain/Steel



Catalog Number	Trade Size	Porcelain Opening	Standard Pkg.
B63-C	2"	7/8" - 1"	25
B73-C	2 1/2"	7/8" - 1"	10

## PIPE MOUNTING WIREHOLDERS

Secures wires before entry into a mast or SE cap

**Features:** Protects sheathing

**Material:** Porcelain/Steel



Catalog Number	Trade Size	Porcelain Opening	Standard Pkg.
B3625	1/4" x 2"	3/8" - 1/2"	100
B3627	3/8" x 2 1/2"	7/8" - 1"	50

## PORCELAIN SPLIT INSULATOR

Utilized for enhanced power transmission

**Features:** Highest quality electrical grade material

**Material:** Porcelain

**Certifications:** cULus



Catalog Number	Trade Size	Unit Pkg.	Standard Pkg.	Catalog Number	Trade Size	Unit Pkg.	Standard Pkg.
SI-100	1"	10	100	SI-150	1 1/2"	5	50



# GROUNDING

GROUND CLAMPS

CONDUIT HUBS &  
ROD CLAMPS

LUGS

TERMINAL LUGS

GREEN PIGTAILS

SPLIT BOLT CONNECTORS



12C



## GROUND CLAMPS BARE WIRE - BRONZE

Use to ground bare wire to galvanized steel pipes or copper tubing

**Features:** Rotational movement of clamps permit fast approval when required

**Material:** Bronze

**Certifications:** cULus

\* Brass screws



Catalog Number	Trade Size	Unit Pkg.	Standard Pkg.
19B	1/2" to 1"	25	250
+B19B	1/2" to 1"	25	250
59B	1 1/4" to 2"	-	50
+B59B	1 1/4" to 2"	-	50
56B	2 1/2" to 4"	-	10
+B56B	2 1/2" to 4"	-	10
57B	4" to 6"	-	5

## GROUND CLAMPS BARE WIRE - ZINC

Use to ground bare wire to galvanized steel pipes or copper tubing

**Features:** Rotational movement of clamps permit fast approval when required

**Material:** Zinc

**Certifications:** cULus

\* Brass finish

\*\* Bright zinc finish



Catalog Number	Trade Size	Unit Pkg.	Standard Pkg.
+19BZ	1/2" to 1"	25	250
**19Z	1/2" to 1"	25	250

## GROUND CLAMPS ARMORED CABLE - BRONZE

Use to ground armored cable to galvanized steel pipes or copper tubing

**Features:** Structural clamp securely holds armor

**Material:** Bronze

**Certifications:** cULus



Catalog Number	Trade Size	Unit Pkg.	Standard Pkg.
39B	1/2" to 1"	25	250
49B	1 1/4" to 2"	-	50

## REBAR GROUND CLAMPS

For securing bare copper ground to rebar

**Features:** Bronze with stainless steel screws

**Material:** Bronze

**Certifications:** cULus



Catalog Number	Trade Size	Unit Pkg.	Standard Pkg.
369D	3/8" to 1"	25	100

## GROUND CLAMPS W/HUB FOR RIGID CONDUIT BRONZE

Use to ground bare copper wire to galvanized steel water pipes, ground rods or other structural members

**Features:** Assemble with threaded hub for use on rigid conduit pipe

**Material:** Bronze

**Certifications:** cULus

\* Brass screws



Catalog Number	Trade Size	Unit Pkg.	Standard Pkg.	Catalog Number	Trade Size	Unit Pkg.	Standard Pkg.
7C	1/2" to 1" - 1/2" Hub	10	100	13C	1 1/4" to 2" - 3/4" Hub	10	50
+B7C	1/2" to 1" - 1/2" Hub	10	100	14C	2 1/2" to 4" - 3/4" Hub	-	10
9C	1 1/4" to 2" - 1/2" Hub	10	50	15C	4" to 6" - 3/4" Hub	-	5
10C	2 1/2" to 4" - 1/2" Hub	-	10	240	1/2" to 1" - 1" Hub	10	50
11C	4" to 6" - 1/2" Hub	-	5	241	1 1/4" to 2" - 1" Hub	-	25
12C	1/2" to 1" - 3/4" Hub	10	100	242	2 1/2" to 4" - 1" Hub	-	10
+B12C	1/2" to 1" - 3/4" Hub	10	100	243	4" to 6" - 1" Hub	-	10

## GROUND HUBS - BRONZE

Use with grounding pipe clamps to connect rigid conduit to water pipes for grounding

**Features:** Assemble with threaded hub for use on rigid conduit pipe

**Material:** Bronze

**Certifications:** cULus



Catalog Number	Trade Size	Unit Pkg.	Standard Pkg.
875	1/2"	25	100
876	3/4"	25	100
877	1"	25	50

## ROD CLAMPS - BRONZE

Securely connects a grounding connector to a drive

**Features:** Approved for direct burial in ground and concrete

**Material:** Bronze

**Certifications:** cULus

\* Brass screw



Catalog Number	Trade Size	Unit Pkg.	Standard Pkg.
52	1/2"	25	250
+52B	1/2"	25	250
53	5/8"	-	100
+53B	5/8"	-	100
+54B	3/4"	-	50

## LAY-IN GROUNDING LUGS ALUMINUM

For use with aluminum or copper conductor

**Features:** Provides positive grounding points in load centers or enclosures

**Material:** Aluminum

**Certifications:** cULus



Catalog Number	Trade Size	Standard Pkg.
GL-144	14-4	100
GL-1410	14 1/0	100
GL-630	6-3/0	50
GL-6250	6-250MCM	50

## SOLDERLESS CONNECTORS ALUMINUM

Terminates an electrical conductor to facilitate mechanical connection

**Features:** Two conductor design

**Material:** Aluminum

**Certifications:** cULus



Catalog Number	Wire Range	Unit Pkg.	Standard Pkg.
RA-6A	4-14	100	1,000
RA-2A	2-14	100	1,000
RA-0	1/0-14	50	500
RA-2/0	2/0-14	50	500

## GROUNDING PIGTAIL

Use to ground receptacles to steel boxes

**Features:** Plated green to ensure proper identification

**Material:** Copper/Steel Screw

Catalog Number	Description	Unit Pkg.	Standard Pkg.
GP	10-32 x 3/8" w/#12 wire	100	1,000



## SPLIT BOLT SERVICE CONNECTORS

For copper to copper connections including copper weld wire

**Features:** Resistant to corrosion and cracking

**Material:** Bronze

**Certifications:** UL



Catalog Number	Trade Size	Standard Pkg.	Catalog Number	Trade Size	Standard Pkg.
SB-10	16 Str. - 10 Str.	100	SB-2/0	2 Sol. - 2/0 Str.	25
SB-8	12 Sol. - 8 Str.	100	SB-3/0	2 Sol. - 3/0 Str.	25
SB-6	10 Sol. - 6 Str.	100	SB-4/0-250	1/0 Sol. - 250MCM	25
SB-4	8 Sol. - 4 Str.	100	SB-350	4/0 Sol. - 350MCM	12
SB-2	6 Sol. - 2 Str.	100	SB-500	250-500 MCM	12
SB-1/0	4 Sol. - 1/0 Str.	50			

## SPLIT BOLT SERVICE CONNECTORS W/SPACER BAR

For copper to copper, copper to aluminum, aluminum to aluminum

**Features:** Electro tin-plated, high strength alloy with spacer

**Material:** Bronze

**Certifications:** UL



Catalog Number	Trade Size	Standard Pkg.	Catalog Number	Trade Size	Standard Pkg.
SB-10-SP	16 Str. - 10 Str.	100	SB-2/0-SP	6 Str. - 2/0 Str.	25
SB-8-SP	16 Str. - 8 Str.	100	SB-3/0-SP	4 Str. - 3/0 Str.	25
SB-6-SP	14 Str. - 6 Sol.	100	SB-4/0-250-SP	4 Str. - 250MCM	25
SB-4-SP	10 Sol. - 4 Str.	100	SB-350-SP	3/0 Str. - 350MCM	12
SB-2-SP	8 Sol. - 2 Str.	100	SB-500-SP	3/0 Str. - 500MCM	12
SB-1/0-SP	6 Sol. - 1/0 Str.	50			

# MISCELLANEOUS

**KNOCKOUT SEALS**

**ANTI-SHORT BUSHINGS**

**DUCT-SEAL COMPOUND**

**BLANK CEILING  
OUTLET COVERS**

**ROUND FLAT BOX COVERS**



20



### KNOCKOUT SEALS

Provides a safe barrier for the protection of exposed wires

**Features:** Easily installs into unused box knockouts  
**Material:** Steel



Catalog Number	Trade Size	Unit Pkg.	Standard Pkg.
20	1/2"	200	2,000
21	3/4"	100	1,000
22	1"	100	1,000
23	1 1/4"	50	500
24	1 1/2"	50	500
25	2"	25	250

### ANTI-SHORT BUSHINGS

Inserted to protect conductors from the sharp edges of the raceway where cut

**Features:** Plastic construction compatible with AC and FMC  
**Material:** Polyethylene  
**Certifications:** UL



Catalog Number	Trade Size	Unit Pkg.	Standard Pkg.
383	0	14/2, 14/3, 12/2	100
384	1	14/4, 12/3, 6/1, 4/1	100
385	2	12/4, 10/2, 10/3, 2/1	100
386	3	10/4, 8/2, 8/3, 1/1	100
387	4	8/4, 6/2, 6/3, 6/4, 4/2, 4/3	100

### DUCT-SEAL WEATHERPROOF COMPOUND

Use to seal around junction boxes, flashings, and service entrances

**Features:** Soft and non-toxic  
**Material:** Non-drying synthetic polymer  
**Certifications:** UL



Catalog Number	Unit Pkg.	Standard Pkg.
DX-1	1	50
DX-5	1	10

### CEILING BOX OUTLET COVER

To close an outlet box or mount a device

**Features:** Steel construction with white powder coat finish  
**Material:** Steel



Catalog Number	Trade Size	Standard Pkg.
CC-4W	4"	50

### ROUND FLAT BOX COVER

Use to cover 4" round octagon boxes

**Features:** 1/2" knockout, galvanized  
**Material:** Steel  
**Certifications:** cULus



Catalog Number	Trade Size	Standard Pkg.
54C6	4"	100

Part No.	Page Number
4L	45
4XL-AL	45
4P	37
4XL	37
6	32
8	32
7C	49
B7C	49
9C	49
10C	49
11C	49
12C	49
B12C	49
13C	49
14C	49
15C	49
19B	49
B19B	49
19BZ	49
19Z	49
20	52
21	52
22	52
23	52
24	52
25	52
26	45
27	45
28	45
29	45
30	45
31	45
32	45
33	45
34	45
35	45
36	45
37	45
39B	49
40	31
41	31
42	31
43	31
44	31
45	31
46	31
40M	31
41M	31
42M	31
43M	31
44M	31
45M	31
46M	31
47M	31
48M	31

Part No.	Page Number
49M	31
49M-A	31
49B	49
52	49
52B	49
53	49
53B	49
54B	49
54C6	52
56B	49
B56B	49
57B	49
59B	49
B59B	49
61ME	22
63ME	22
66ME	22
70ME	22
105R	31
106R	31
107R	31
108R	31
109R	31
108	31
109	31
130	32
132	32
135	31
135-C	31
162	20
163	20
164	20
165	20
166	20
167	20
168	20
169	20
170	20
171	20
160-S	20
161-S	20
162-S	20
163-S	20
164-S	20
165-S	20
166-S	20
167-S	20
168-S	10,20
169-S	10,20
170-S	10,20
171-S	10,20
180-S	10
181-S	10
182-S	10
183-S	10

Part No.	Page Number
184-S	10
185-S	10
188A	45
188B	45
199	21
200	21
201	21
202	21
203	21
204	21
205	21
206	21
207	21
208	21
209	21
210	21
212	21
213	21
201SL	21
202SL	21
203SL	21
204SL	21
205SL	21
206SL	21
207SL	21
208SL	21
209SL	21
210SL	21
220	31
222	31
223	31
225	31
226	31
227	31
228	31
220M	31
222M	31
223M	31
225M	31
226M	31
227M	31
228M	31
229M	31
230M	31
231M	31
232M	31
240	49
241	49
242	49
243	49
260	5
261	5
262	5
263	5
264	5

Part No.	Page Number
265	5
266	5
267	5
268	5
269	5
260ST	4
261ST	4
262ST	4
263ST	4
264ST	4
265ST	4
266ST	4
267ST	4
268ST	4
269ST	4
260RST	4
261RST	4
262RST	4
263RST	4
264RST	4
265RST	4
266RST	4
267RST	4
268RST	4
269RST	4
260BST	4
261BST	4
262BST	4
263BST	4
264BST	4
265BST	4
266BST	4
267BST	4
268BST	4
269BST	4
260RBST	4
261RBST	4
262RBST	4
263RBST	4
264RBST	4
265RBST	4
266RBST	4
267RBST	4
268RBST	4
269RBST	4
260-90	5
261-90	5
282	20
283	20
284	20
285	20
286	20
287	20
288	20
289	20

Part No.	Page Number	Part No.	Page Number	Part No.	Page Number	Part No.	Page Number
290	20	318ST	4	370	17	703	45
291	20	319ST	4	371	17	704	45
300	5	320	5	372	17	705	45
301	5	321	5	373	17	706	45
302	5	322	5	374	17	707	45
303	5	323	5	375	17	708	45
304	5	324	5	376	17	709	45
305	5	325	5	377	17	712	45
306	5	326	5	378	17	713	45
307	5	327	5	379	17	715	45
308	5	328	5	381	17	717	45
309	5	329	5	382	17	730	45
300-OC	5	320ST	4	375SPC	17	731	45
301-OC	5	321ST	4	376SPC	17	732	45
302-OC	5	322ST	4	377SPC	17	733	45
300ST	4	323ST	4	378SPC	17	734	45
301ST	4	324ST	4	379SPC	17	735	45
302ST	4	325ST	4	381SPC	17	733-XL	45
303ST	4	326ST	4	382SPC	17	735-XL	45
304ST	4	327ST	4	383	52	780-DC	22
305ST	4	328ST	4	384	52	781-DC	22
306ST	4	329ST	4	385	52	800	22
307ST	4	320RST	4	386	52	801	22
308ST	4	321RST	4	387	52	802	22
309ST	4	322RST	4	501	20	803	22
300BST	4	323RST	4	502	20	830	22
301BST	4	324RST	4	503	20	831	22
302BST	4	325RST	4	504	20	832	22
303BST	4	326RST	4	505	20	833	22
304BST	4	327RST	4	506	20	834	22
305BST	4	328RST	4	507	20	835	22
306BST	4	329RST	4	508	20	836	22
307BST	4	332	22	509	20	837	22
308BST	4	333	22	510	20	850	22
309BST	4	334	22	512	20	851	22
300-90	5	335	22	513	20	852	22
301-90	5	336	22	650	21	853	22
310	5	337	22	651	21	854	22
311	5	338	22	650EMT	6	855	22
312	5	339	22	651EMT	6	875	49
313	5	340	22	670	21	876	49
314	5	341	22	671	21	877	49
315	5	332M	22	672	21	902	47
316	5	333M	22	673	21	903	47
317	5	334M	22	670EMT	6	904	47
318	5	335M	22	671EMT	6	905	47
319	5	336M	22	672EMT	6	902S	47
310ST	4	337M	22	680EMT	6	904S	47
311ST	4	338M	22	681EMT	6	938	32
312ST	4	339M	22	685	5,32	960	16
313ST	4	340M	22	686	5,32	961	16
314ST	4	341M	22	687	5,32	962	16
315ST	4	343M	22	700	45	963	16
316ST	4	344M	22	701	45	964	16
317ST	4	369D	49	702	45	965	16



Part No.	Page Number	Part No.	Page Number	Part No.	Page Number	Part No.	Page Number
960RT	16	989MA	16	C-50M	14	CG-125-D1375	34
961RT	16	990MA	16	C-75M	14	CG-150-D1050	34
962RT	16	991MA	16	C-100M	14	CG-150-D1150	34
963RT	16	992MA	16	C-125M	14	CG-150-D1250	34
964RT	16	993MA	16	C-150M	14	CG-150-D1375	34
965RT	16	994MA	16	C-200M	14	CS-150B	2
966MART	16	995MA	16	C-250M	14	CS-200B	2
967MART	16	996MA	16	C-300M	14	CS-250B	2
968MART	16	997MA	16	C-350M	14	CS-300B	2
969MART	16	998MA	16	C-400M	14	CS-350B	2
960MA	16	999MA	16	CBS	47	CS-400B	2
961MA	16	1015C	22	CC-50A	12	CS-150PT1	2
962MA	16	1016C	22	CC-75A	12	CS-200PT1	2
963MA	16	1017C	22	CC-100A	12	CS-250PT1	2
964MA	16	1018C	22	CC-125A	12	CS-300PT1	2
965MA	16	1019C	22	CC-150A	12	CS-350PT1	2
966MA	16	AC-50	8,15	CC-200A	12	CS-400PT1	2
967MA	16	AC-75	8,15	CC-250A	12	CS-150PT2	2
968MA	16	AC-100	8,15	CC-300A	12	CS-200PT2	2
969MA	16	AC-125	8,15	CC-350A	12	CS-250PT2	2
970MA	16	AC-200	8,15	CC-400A	12	CS-300PT2	2
971MA	16	AC-250	8,15	CC-50AE	7	CS-350PT2	2
972MA	16	AC-350	8,15	CC-75AE	7	CS-400PT2	2
973MA	16	AWH-300	47	CC-100AE	7	CSR-200B	2
974MA	16	B63-C	47	CC-125AE	7	CSR-250B	2
975MA	16	B73-C	47	CC-150AE	7	CSR-300B	2
976MA	16	B3625	47	CC-200AE	7	CSR-350B	2
977MA	16	B3627	47	CC-250AE	7	CSR-400B	2
978MA	16	BX-50	32	CC-300AE	7	CSR-200PT1	2
979MA	16	C-50A	12	CC-350AE	7	CSR-250PT1	2
980	16	C-75A	12	CC-400AE	7	CSR-300PT1	2
981	16	C-100A	12	CC-4W	52	CSR-350PT1	2
982	16	C-125A	12	CG-50-A250	34	CSR-400PT1	2
983	16	C-150A	12	CG-50-A350	34	CSR-200PT2	2
984	16	C-200A	12	CG-50-A450	34	CSR-250PT2	2
985	16	C-250A	12	CG-50-A560	34	CSR-300PT2	2
980RT	16	C-300A	12	CG-50-A650	34	CSR-350PT2	2
981RT	16	C-350A	12	CG-75-A250	34	CSR-400PT2	2
982RT	16	C-400A	12	CG-75-A350	34	DX-1	52
983RT	16	C-50AE	6	CG-75-A450	34	DX-5	52
984RT	16	C-75AE	6	CG-75-A560	34	ELB-15125	10
985RT	16	C-100AE	6	CG-75-A650	34	ELB-15150	10
986MART	16	C-125AE	6	CG-75-B750	34	ELB-15200	10
987MART	16	C-150AE	6	CG-75-B850	34	ELB-15250	10
988MART	16	C-200AE	6	CG-100-B560	34	ELB-15300	10
989MART	16	C-250AE	6	CG-100-B650	34	ELB-15350	10
980MA	16	C-300AE	6	CG-100-B750	34	ELB-15400	10
981MA	16	C-350AE	6	CG-100-B850	34	ELB-22125	10
982MA	16	C-400AE	6	CG-100-C950	34	ELB-22150	10
983MA	16	C-50CA	7,13	CG-100-C1050	34	ELB-22200	10
984MA	16	C-75CA	7,13	CG-125-C850	34	ELB-22250	10
985MA	16	C-100CA	7,13	CG-125-C950	34	ELB-22300	10
986MA	16	C-125CA	7,13	CG-125-D1050	34	ELB-22350	10
987MA	16	C-150CA	7,13	CG-125-D1150	34	ELB-22400	10
988MA	16	C-200CA	7,13	CG-125-D1250	34	ELB-30125	10

Part No.	Page Number
ELB-30150	10
ELB-30200	10
ELB-30250	10
ELB-30300	10
ELB-30350	10
ELB-30400	10
ELB-4550	10
ELB-4575	10
ELB-45100	10
ELB-45125	10
ELB-45150	10
ELB-45200	10
ELB-45250	10
ELB-45300	10
ELB-45350	10
ELB-45400	10
ELB-9050	10
ELB-9075	10
ELB-90100	10
ELB-90125	10
ELB-90150	10
ELB-90200	10
ELB-90250	10
ELB-90300	10
ELB-90350	10
ELB-90400	10
EYA-50	26
EYA-75	26
EYA-100	26
EYA-50A	26
EYA-75A	26
EYA-100A	26
EYS-1	26
EYS-2	26
EYS-3	26
EYSC-8	26
EYSC-16	26
EYSC-80	26
EYSC-160	26
EYPF-4	26
EYPF-8	26
EYPF-16	26
FC-14	24
FC-16	24
FC-18	24
FC-110	24
FC-112	24
FC-115	24
FC-118	24
FC-121	24
FC-124	24
FC-127	24
FC-130	24
FC-133	24
FC-136	24

Part No.	Page Number
FC-24	24
FC-26	24
FC-28	24
FC-210	24
FC-212	24
FC-215	24
FC-218	24
FC-221	24
FC-224	24
FC-227	24
FC-230	24
FC-233	24
FC-236	24
FC-36	24
FC-38	24
FC-310	24
FC-312	24
FC-315	24
FC-318	24
FC-321	24
FC-324	24
FC-327	24
FC-330	24
FC-333	24
FC-336	24
FC-412	24
FC-415	24
FC-418	24
FC-421	24
FC-424	24
FC-427	24
FC-430	24
FC-433	24
FC-436	24
FC-512	24
FC-515	24
FC-518	24
FC-521	24
FC-524	24
FC-527	24
FC-530	24
FC-533	24
FC-536	24
FC-612	24
FC-615	24
FC-618	24
FC-621	24
FC-624	24
FC-627	24
FC-630	24
FC-633	24
FC-636	24
FCPE-50	6,21
FCPE-75	6,21
FCPE-100	6,21

Part No.	Page Number
FCPE-125	6,21
FG-1DC	43
FG-1DCW	43
GL-50	21
GL-75	21
GL-100	21
GL-125	21
GL-150	21
GL-200	21
GL-250	21
GL-300	21
GL-350	21
GL-400	21
GL-500	21
GL-144	50
GL-1410	50
GL-630	50
GL-6250	50
GP	50
GUAB-50A	25
GUAB-75A	25
GUAB-100A	25
GUAC-50A	25
GUAC-75A	25
GUAC-100A	25
GUAL-50A	25
GUAL-75A	25
GUAL-100A	25
GUAT-50A	25
GUAT-75A	25
GUAT-100A	25
GWS-8	32
H50WB	47
H75WB	47
H100WB	47
H125AWB	47
H125WB	47
H150WB	47
H200WB	47
H250WB	47
H300WB	47
H350WB	47
H400WB	47
LB-50A	12
LB-75A	12
LB-100A	12
LB-125A	12
LB-150A	12
LB-200A	12
LB-250A	12
LB-300A	12
LB-350A	12
LB-400A	12
LB-50AE	6
LB-75AE	6

Part No.	Page Number
LB-100AE	6
LB-125AE	6
LB-150AE	6
LB-200AE	6
LB-250AE	6
LB-300AE	6
LB-350AE	6
LB-400AE	6
LB-50CA	8,13
LB-75CA	8,13
LB-100CA	8,13
LB-125CA	8,13
LB-150CA	8,13
LB-200CA	8,13
LB-50M	14
LB-75M	14
LB-100M	14
LB-125M	14
LB-150M	14
LB-200M	14
LB-250M	14
LB-300M	14
LB-350M	14
LB-400M	14
LBC-50A	13
LBC-75A	13
LBC-100A	13
LBC-125A	13
LBC-150A	13
LBC-200A	13
LBC-250A	13
LBC-300A	13
LBC-350A	13
LBC-400A	13
LBC-50AE	7
LBC-75AE	7
LBC-100AE	7
LBC-125AE	7
LBC-150AE	7
LBC-200AE	7
LBC-250AE	7
LBC-300AE	7
LBC-350AE	7
LBC-400AE	7
LL-50A	12
LL-75A	12
LL-100A	12
LL-125A	12
LL-150A	12
LL-200A	12
LL-250A	12
LL-300A	12
LL-350A	12
LL-400A	12
LL-50AE	6

Part No.	Page Number	Part No.	Page Number	Part No.	Page Number	Part No.	Page Number
LL-75AE	6	LR-50AE	7	MIB-93M	20	P140	17
LL-100AE	6	LR-75AE	7	MIB-94M	20	P10500	18
LL-125AE	6	LR-100AE	7	MIB-95M	20	P10515	18
LL-150AE	6	LR-125AE	7	MIB-96M	20	P10520	18
LL-200AE	6	LR-150AE	7	MIB-97M	20	P10525	18
LL-250AE	6	LR-200AE	7	MIB-98M	20	P10530	18
LL-300AE	6	LR-250AE	7	MIB-99M	20	P10540	18
LL-350AE	6	LR-300AE	7	MIB-101M	20	P10550	18
LL-400AE	6	LR-350AE	7	MIB-102M	20	P10560	18
LL-50CA	8,14	LR-400AE	7	MIGB-80M	19	P10580	18
LL-75CA	8,14	LR-50CA	8,14	MIGB-81M	19	P10510	18
LL-100CA	8,14	LR-75CA	8,14	MIGB-82M	19	P10512	18
LL-125CA	8,14	LR-100CA	8,14	MIGB-83M	19	P10700	18
LL-150CA	8,14	LR-125CA	8,14	MIGB-84M	19	P10715	18
LL-200CA	8,14	LR-150CA	8,14	MIGB-85M	19	P10720	18
LL-50M	14	LR-200CA	8,14	MIGB-86M	19	P10725	18
LL-75M	14	LR-50M	14	MIGB-87M	19	P10730	18
LL-100M	14	LR-75M	14	MIGB-88M	19	P10740	18
LL-125M	14	LR-100M	14	MIGB-89M	19	P10750	18
LL-150M	14	LR-125M	14	MIGB-101M	19	P10760	18
LL-200M	14	LR-150M	14	MIGB-102M	19	P10780	18
LL-250M	14	LR-200M	14	MK-200	45	P10710	18
LL-300M	14	LR-250M	14	MK-250	45	P10712	18
LL-350M	14	LR-300M	14	NMLC-50	29	P11000	18
LL-400M	14	LR-350M	14	NMLC-50R	29	P11020	18
LLC-50A	13	LR-400M	14	NMLC-75	29	P11030	18
LLC-75A	13	LRC-50A	13	NMLC-75R	29	P11040	18
LLC-100A	13	LRC-75A	13	NMLC-100	29	P11050	18
LLC-125A	13	LRC-100A	13	NMLC-100R	29	P11060	18
LLC-150A	13	LRC-125A	13	NMLC-125	29	P11080	18
LLC-200A	13	LRC-150A	13	NMLC-150	29	P11010	18
LLC-250A	13	LRC-200A	13	NMLC-200	29	P11012	18
LLC-300A	13	LRC-250A	13	NMLT-38	29	P11200	18
LLC-350A	13	LRC-300A	13	NMLT-50	29	P11220	18
LLC-400A	13	LRC-350A	13	NMLT-75	29	P11230	18
LLC-50AE	7	LRC-400A	13	NMLT-100	29	P11240	18
LLC-75AE	7	LRC-50AE	7	NMLT-125	29	P11250	18
LLC-100AE	7	LRC-75AE	7	NMLT-150	29	P11260	18
LLC-125AE	7	LRC-100AE	7	NMLT-200	29	P11280	18
LLC-150AE	7	LRC-125AE	7	NMLT-90-38	29	P11210	18
LLC-200AE	7	LRC-150AE	7	NMLT-90-50	29	P11212	18
LLC-250AE	7	LRC-200AE	7	NMLT-90-75	29	P11500	19
LLC-300AE	7	LRC-250AE	7	NMLT-90-100	29	P11520	18
LLC-350AE	7	LRC-300AE	7	NMLT-90-125	29	P11530	18
LLC-400AE	7	LRC-350AE	7	NMLT-90-150	29	P11540	18
LR-50A	12	LRC-400AE	7	NMLT-90-200	29	P11550	19
LR-75A	12	MC-50	32	P105	17	P11560	19
LR-100A	12	MC-50D	32	P107	17	P11580	19
LR-125A	12	MCPE-50	6,22	P110	17	P11510	19
LR-150A	12	MCPE-75	6,22	P112	17	P11512	19
LR-200A	12	MCPE-100	6,22	P115	17	P12000	19
LR-250A	12	MCPE-125	6,22	P120	17	P12025	19
LR-300A	12	MIB-90M	20	P125	17	P12030	19
LR-350A	12	MIB-91M	20	P130	17	P12040	19
LR-400A	12	MIB-92M	20	P135	17	P12050	19



Part No.	Page Number	Part No.	Page Number	Part No.	Page Number	Part No.	Page Number
P12060	19	PC-81W	43	RB150-50	20	RLB-45300	18
P12080	19	PC-261	43	RB150-75	20	RLB-45350	18
P12010	19	PC-261W	43	RB150-100	20	RLB-45400	18
P12012	19	PC-271	43	RB150-125	20	RLB-9050	17
P12500	19	PC-271W	43	RB200-50	20	RLB-9075	17
P12530	19	PL-11	42	RB200-75	20	RLB-90100	17
P12540	19	PL-11W	42	RB200-100	20	RLB-90125	17
P12550	19	PL-11-2	42	RB200-125	20	RLB-90150	17
P12560	19	PL-11-2W	42	RB200-150	20	RLB-90200	17
P12580	19	PL-11-22	42	RB250-100	20	RLB-90250	17
P12510	19	PL-11-22W	42	RB250-125	20	RLB-90300	17
P12512	19	PL-14	42	RB250-150	20	RLB-90350	17
P13000	19	PL-14W	42	RB250-200	20	RLB-90400	17
P13030	19	PL-14-2	42	RB300-100	20	RT-260	6,29
P13040	19	PL-14-2W	42	RB300-125	20	RT-261	6,29
P13050	19	PL-14-22	42	RB300-150	20	RT-38	28
P13060	19	PL-14-22W	42	RB300-200	20	RT-50	28
P13080	19	PL-15	42	RB300-250	20	RT-75	28
P13010	19	PL-15-22	42	RB350-200	20	RT-100	28
P13012	19	PLBY-50	25	RB350-250	20	RT-125	28
P13500	19	PLBY-75	25	RB350-300	20	RT-150	28
P13540	19	PLBY-100	25	RB400-200	20	RT-200	28
P13550	19	PLBY-125	25	RB400-250	20	RT-250	28
P13560	19	PO-50	43	RB400-300	20	RT-300	28
P13580	19	PR-1	43	RB400-350	20	RT-350	28
P13510	19	PR-1W	43	RF2	45	RT-400	28
P13512	19	PR-2	43	RF25	45	RT-90-38	28
P14000	19	PR-2W	43	RLB-15125	18	RT-90-50	28
P14040	19	PR-3	43	RLB-15150	18	RT-90-75	28
P14050	19	PR-3W	43	RLB-15200	18	RT-90-100	28
P14060	19	PR11-4	42	RLB-15250	18	RT-90-125	28
P14080	19	PR11-4W	42	RLB-15300	18	RT-90-150	28
P14010	19	PR14-4	42	RLB-15350	18	RT-90-200	28
P14012	19	PR14-4W	42	RLB-15400	18	RT-90-250	28
P-1	42	PT-11	42	RLB-22125	18	RT-90-300	28
P-1W	42	PT-11W	42	RLB-22150	18	RT-90-350	28
P-2	42	PT-11-22	42	RLB-22200	18	RT-90-400	28
P-2W	42	PT-11-22W	42	RLB-22250	18	RT-38S	28
P-3	42	PT-14	42	RLB-22300	18	RT-50S	28
P-3W	42	PT-14W	42	RLB-22350	18	RT-75S	28
PAR-1	42	PT-14-22	42	RLB-22400	18	RT-100S	28
PAR-1W	42	PT-14-22W	42	RLB-30125	18	RT-125S	28
PC-0	42	PT-15	42	RLB-30150	18	RT-150S	28
PC-0W	42	PT-15-22	42	RLB-30200	18	RT-200S	28
PC-02	42	RA-6A	50	RLB-30250	18	RT-38MA	28
PC-02W	43	RA-2A	50	RLB-30300	18	RT-50MA	28
PC-1	43	RA-0	50	RLB-30350	18	RT-75MA	28
PC-1W	43	RA-2/0	50	RLB-30400	18	RT-100MA	28
PC-2	43	RB50-38	20	RLB-4550	18	RT-125MA	28
PC-2W	43	RB75-50	20	RLB-4575	18	RT-150MA	28
PC-3	43	RB100-50	20	RLB-45100	18	RT-200MA	28
PC-3W	43	RB100-75	20	RLB-45125	18	RT-250MA	28
PC-71	43	RB125-50	20	RLB-45150	18	RT-300MA	28
PC-71W	43	RB125-75	20	RLB-45200	18	RT-350MA	28
PC-81	43	RB125-100	20	RLB-45250	18	RT-400MA	28

Part No.	Page Number	Part No.	Page Number	Part No.	Page Number	Part No.	Page Number
RT-45-38MA	28	RW350-125	21	T-350A	12	TH-162S	20
RT-45-50MA	28	RW350-150	21	T-400A	12	TH-163S	20
RT-45-75MA	28	RW350-200	21	T-50AE	7	TH-164S	20
RT-45-100MA	28	RW350-250	21	T-75AE	7	TH-165S	20
RT-45-125MA	28	RW350-300	21	T-100AE	7	TH-166S	20
RT-45-150MA	28	RW400-50	21	T-125AE	7	TH-167S	20
RT-45-200MA	28	RW400-75	21	T-150AE	7	TH-168S	10,20
RT-45-250MA	28	RW400-100	21	T-200AE	7	TH-169S	10,20
RT-45-300MA	28	RW400-125	21	T-250AE	7	TH-170S	10,20
RT-45-350MA	28	RW400-150	21	T-300AE	7	TH-171S	10,20
RT-45-400MA	28	RW400-200	21	T-350AE	7	TH-173S	20
RT-90-38MA	28	RW400-250	21	T-400AE	7	TH-174S	20
RT-90-50MA	28	RW400-300	21	T-50CA	8,14	TH-180S	10
RT-90-75MA	28	RW400-350	21	T-75CA	8,14	TH-181S	10
RT-90-100MA	28	SB-10	50	T-100CA	8,14	TH-182S	10
RT-90-125MA	28	SB-8	50	T-125CA	8,14	TH-183S	10
RT-90-150MA	28	SB-6	50	T-150CA	8,14	TH-184S	10
RT-90-200MA	28	SB-4	50	T-200CA	8,14	TH-185S	10
RT-90-250MA	28	SB-2	50	T-50M	14	TPO-50V	43
RT-90-300MA	28	SB-1/0	50	T-75M	14	UF-50	45
RT-90-350MA	28	SB-2/0	50	T-100M	14	UF-75	45
RT-90-400MA	28	SB-3/0	50	T-125M	14	UNF-50	25
RTCC-50	17,29	SB-4/0-250	50	T-150M	14	UNF-75	25
RTCC-75	17,29	SB-350	50	T-200M	14	UNF-100	25
RW75-50	21	SB-500	50	T-250M	14	V45-S-50	37
RW100-50	21	SB-10-SP	50	T-300M	14	V45-S-75	37
RW100-75	21	SB-8-SP	50	T-350M	14	V45-S-100	37
RW125-50	21	SB-6-SP	50	T-400M	14	V45-S-125	37
RW125-75	21	SB-4-SP	50	TC-50A	13	V45-S-150	37
RW125-100	21	SB-2-SP	50	TC-75A	13	V45-S-200	37
RW150-50	21	SB-1/0-SP	50	TC-100A	13	V45-S-250	37
RW150-75	21	SB-2/0-SP	50	TC-125A	13	V45-S-300	37
RW150-100	21	SB-3/0-SP	50	TC-150A	13	V45-S-350	37
RW150-125	21	SB-4/0-250-SP	50	TC-200A	13	V45-S-400	37
RW200-50	21	SB-350-SP	50	TC-250A	13	V45-S-500	37
RW200-75	21	SB-500-SP	50	TC-300A	13	V45-S-600	37
RW200-100	21	SC-50	8,15	TC-350A	13	V90-S-50	37
RW200-125	21	SC-75	8,15	TC-400A	13	V90-S-75	37
RW200-150	21	SC-100	8,15	TC-50AE	7	V90-S-100	37
RW250-50	21	SC-125	8,15	TC-75AE	7	V90-S-125	37
RW250-75	21	SC-200	8,15	TC-100AE	7	V90-S-150	37
RW250-100	21	SC-250	8,15	TC-125AE	7	V90-S-200	37
RW250-125	21	SC-350	8,15	TC-150AE	7	V90-S-250	37
RW250-150	21	SI-100	47	TC-200AE	7	V90-S-300	37
RW250-200	21	SI-150	47	TC-250AE	7	V90-S-350	37
RW300-50	21	SWV-4R	47	TC-300AE	7	V90-S-400	37
RW300-75	21	SWV-4S	47	TC-350AE	7	V90-S-500	37
RW300-100	21	T-50A	12	TC-400AE	7	V90-S-600	37
RW300-125	21	T-75A	12	TAC-50	32	VBA-50	38
RW300-150	21	T-100A	12	TAC-75	32	VBA-75	38
RW300-200	21	T-125A	12	TAC-100	32	VBA-100	38
RW300-250	21	T-150A	12	TAC-125	32	VBA-125	38
RW350-50	21	T-200A	12	TAC-150	32	VBA-150	38
RW350-75	21	T-250A	12	TAC-200	32	VBA-200	38
RW350-100	21	T-300A	12	TH-161S	20	VBA-250	38

Part No.	Page Number	Part No.	Page Number	Part No.	Page Number	Part No.	Page Number
VBA-300	38	VEJ-125	37	VLB-125	37	VTA-100	38
VBA-350	38	VEJ-150	37	VLB-150	37	VTA-125	38
VBA-400	38	VEJ-200	37	VLB-200	37	VTA-150	38
VBC	40	VEJ-250	37	VLB-250	37	VTA-200	38
VC-50	37	VEJ-300	37	VLB-300	37	VTA-250	38
VC-75	37	VEJ-350	37	VLB-350	37	VTA-300	38
VC-100	37	VEJ-400	37	VLB-400	37	VTA-350	38
VC-125	37	VEJ-500	37	VLL-50	38	VTA-400	38
VC-150	37	VEJ-600	37	VLL-75	38	VTA-500	38
VC-200	37	VFA-50	38	VLL-100	38	VTA-600	38
VC-250	37	VFA-75	38	VLL-125	38	VTH-50	40
VC-300	37	VFA-100	38	VLL-150	38	VTH-75	40
VC-350	37	VFA-125	38	VLL-200	38	VTH-100	40
VC-400	37	VFA-150	38	VLL-250	38	VTH-125	40
VCEM-1/2PT	40	VFA-200	38	VLL-300	38	VTH-150	40
VCEM-PT	40	VFA-250	38	VLL-350	38	VTH-200	40
VCEM-QT	40	VFA-300	38	VLL-400	38	VTH-250	40
VPRIM-PT	40	VFA-350	38	VLR-50	38	VTH-300	40
VCPL-50	39	VFA-400	38	VLR-75	38	VTH-400	40
VCPL-75	39	VFA-500	38	VLR-100	38	WH-1	17
VCPL-100	39	VFA-600	38	VLR-125	38	WH-2	17
VCPL-125	39	VFB	40	VLR-150	38	WH-3	17
VCPL-150	39	VFBDR	40	VLR-200	38	WH-4	17
VCPL-200	39	VFD	40	VLR-250	38	WH-5	17
VCPL-250	39	VFS-50	39	VLR-300	38	WH-6	17
VCPL-300	39	VFS-75	39	VLR-350	38	WH-7	17
VCPL-350	39	VFS-100	39	VLR-400	38	WH-8	17
VCPL-400	39	VFSC-50	39	VMH-125	37	WH-9	17
VCPL-500	39	VFSC-75	39	VMH-150	37	WH-10	17
VCPL-600	39	VFSC-100	39	VMH-200	37	WH-1M	17
VEB-50	39	VFSCC-50	39	VMH-250	37	WH-2M	17
VEB-75	39	VFSCC-75	39	VMH-300	37	WH-3M	17
VEB-100	39	VFSCC-100	39	VMH-350	37	WH-4M	17
VEB-125	39	VFSS-50	39	VMH-400	37	WH-5M	17
VEB-150	39	VFSS-75	39	VMR-61	39	WH-6M	17
VEB-200	39	VFSS-100	39	VMR-63	39	WH-7M	17
VEB-250	39	VG-50	8,15	VMR-66	39	WH-8M	17
VEB-300	39	VG-75	8,15	VMR-70	39	WH-9M	17
VEB-350	39	VG-100	8,15	VMR-75	39	WH-10M	17
VEB-400	39	VG-125	8,15	VMR-81	39	XLB-50	25
VEB-500	39	VG-200	8,15	VMR-88	39	XLB-75	25
VEB-600	39	VG-250	8,15	VMR-404	39	XT-50	25
VEC-50	39	VG-350	8,15	VMR-405	39	XT-75	25
VEC-75	39	VJB-442	40	VT-50	38	ZIGB-50	19
VEC-100	39	VJB-444	40	VT-75	38	ZIGB-75	19
VEC-125	39	VJB-664	40	VT-100	38	ZIGB-100	19
VEC-150	39	VJB-666	40	VT-125	38	ZIGB-125	19
VEC-200	39	VJB-884	40	VT-150	38	ZIGB-150	19
VEC-250	39	VJB-886	40	VT-200	38	ZIGB-200	19
VEC-300	39	VJB-887	40	VT-250	38	ZIGB-250	19
VEC-350	39	VJB-12124	40	VT-300	38	ZIGB-300	19
VEC-400	39	VJB-12126	40	VT-350	38	ZIGB-350	19
VEJ-50	37	VLB-50	37	VT-400	38	ZIGB-400	19
VEJ-75	37	VLB-75	37	VTA-50	38		
VEJ-100	37	VLB-100	37	VTA-75	38		



**Notes**

## Notes

## Notes

## Remembering Arthur LeMay (1926 – 2018) A Pioneer in the Electrical Fittings Industry



As a member of PECO's founding family and PECO's leader beginning immediately after WWII, Arthur LeMay has given more to our current success than any single individual over the past 80+ years. Even in the years since his passing, his passion for product quality and service, generosity with people, and both personal and professional dedication to everyone around him - from the manufacturing team to his community and family - continue to help define our vibrant and collaborative work culture at PECO.

"Art" began his work at "The Shop" (the family's informal name for the business), located at 932 Rogers Place in the Bronx, as the Shipping Clerk with his mother and father, Louis and Minerva Levine, running the business.

When WWII arrived, he enlisted in the U.S. Army's Specialized Training Reserve Program. He was sent to NYU School of Engineering before serving on active duty from 1944 to 1946 as a Browning Automatic Rifleman (BAR) in key regional theaters, including the Philippines. Arthur distinguished himself in Advanced Infantry Training and was awarded the Expert Infantryman's Badge.




After his return to the United States, Art led PECO through the celebrations and crises of this American, family-owned business from 1946 to 2018. Customers today still remember him as "firmly at the helm" until the very last years of his life. He built strong personal relationships with our suppliers, agents and customers over the years and those same relationships carry over to his family today.



1991 NYC Marathon

Art served as a model to everyone around him by challenging himself throughout his lifetime. He completed a lifelong goal by returning to college and graduating with a Bachelor of Science from Columbia University at the age of 67. As an avid runner, he also completed 24 New York City Marathons up until he turned 77 years old.

Every time the PECO team completes a successful quality-control review, delivers to a customer faster than they expected due to our manufacturing process or large inventory, or contributes to another landmark high-rise building across our nation, many of us here remember "Mr. LeMay." We know that we are advancing his legacy and transforming the best of his life's work into products, projects and services vital to America's economy, culture and communities in the 21st century. 





CONTACT OUR FRIENDLY CUSTOMER SERVICE  
845-359-4900 • [CUSTOMERSERVICE@PECO-ELECTRIC.COM](mailto:CUSTOMERSERVICE@PECO-ELECTRIC.COM)

[WWW.PECO-ELECTRIC.COM](http://WWW.PECO-ELECTRIC.COM)

Producto Electric Corporation  
11 Kings Highway  
Orangeburg, NY 10962

 [/company/producto-electric](https://www.linkedin.com/company/producto-electric)

